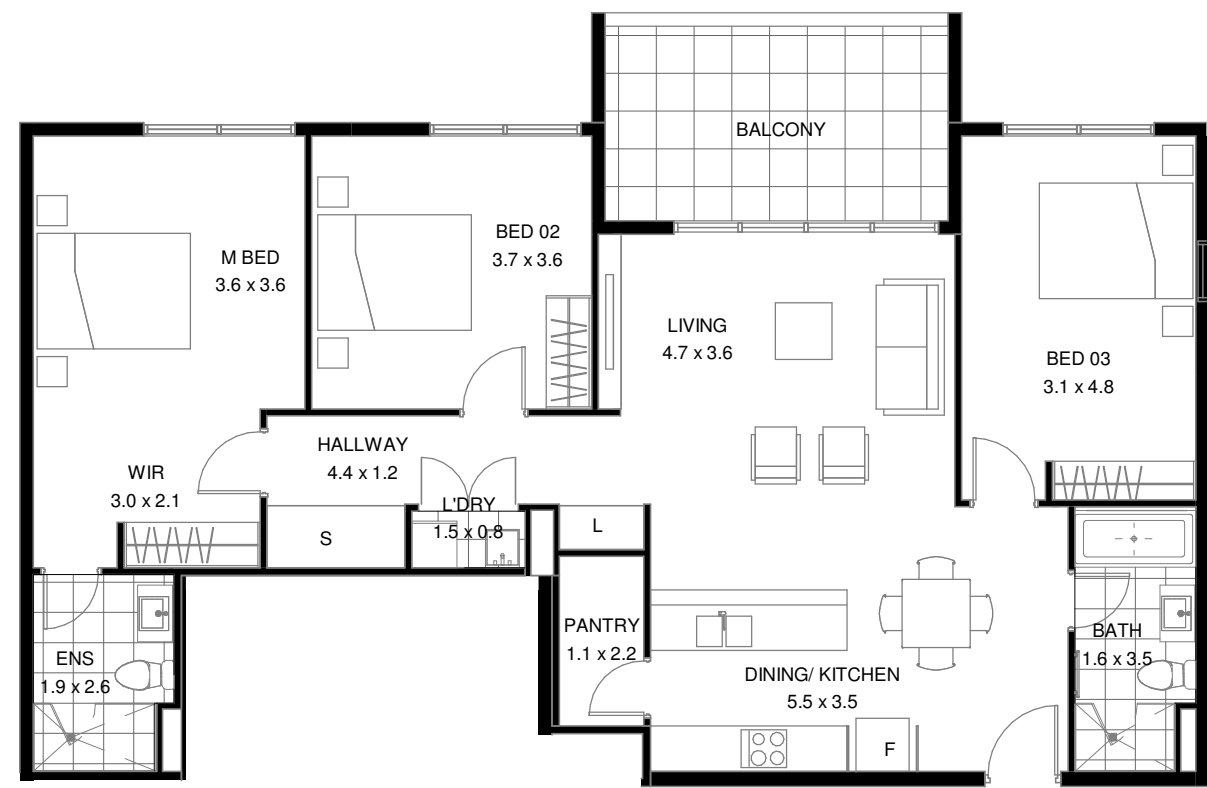


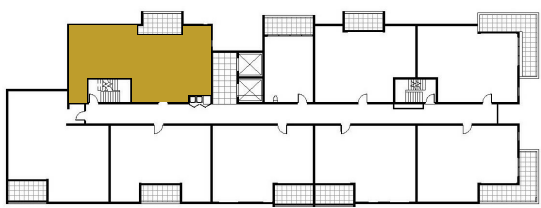
LERIDA & RUGBY STREET, SCHOFIELDS




PELICANA GREEN

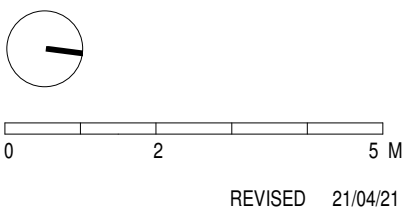


3 BEDROOM

LEVEL 01
APARTMENT 101/1



| | | |
|---|---|---|
|  |  |  |
| 3 | 2 | 1 |
| Internal Area: | 108.0 m ² | |
| External Area: | 12.0 m ² | |
| Total Area: | 120.0 m ² | |



REVISED 21/04/21

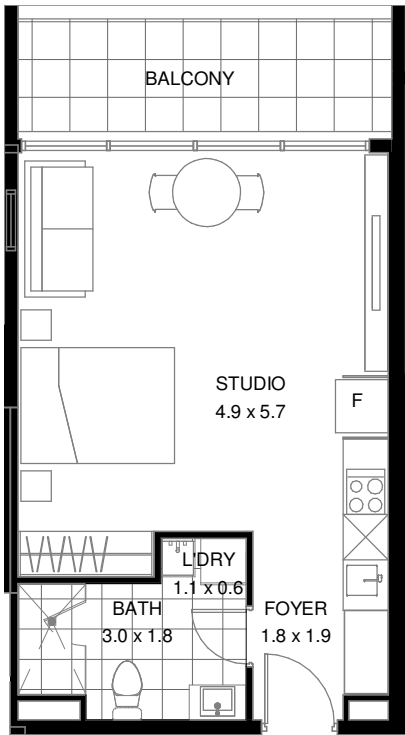

Bathla

1300 228 452 sales@bathla.com.au

Disclaimer: The information and illustrations in this document are indicative only and are subject to the terms of the contract for sale and the strata plan in the contract for sale. Any furniture or fixtures depicted are illustrative only and not part of the property sold. The contract for saleshow's inclusions sold with the property. Purchasers must rely on their enquiries and the information in the contract for sale.

LERIDA & RUGBY STREET, SCHOFIELDS




PELICANA GREEN

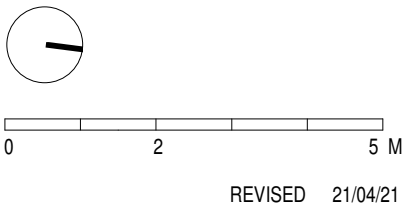


STUDIO

LEVEL 01
APARTMENT 102/1



| | | |
|---|---|---|
|  |  |  |
| 0 | 1 | 1 |
| Internal Area: | | 36.2 m ² |
| External Area: | | 7.8 m ² |
| Total Area: | | 44.0 m ² |

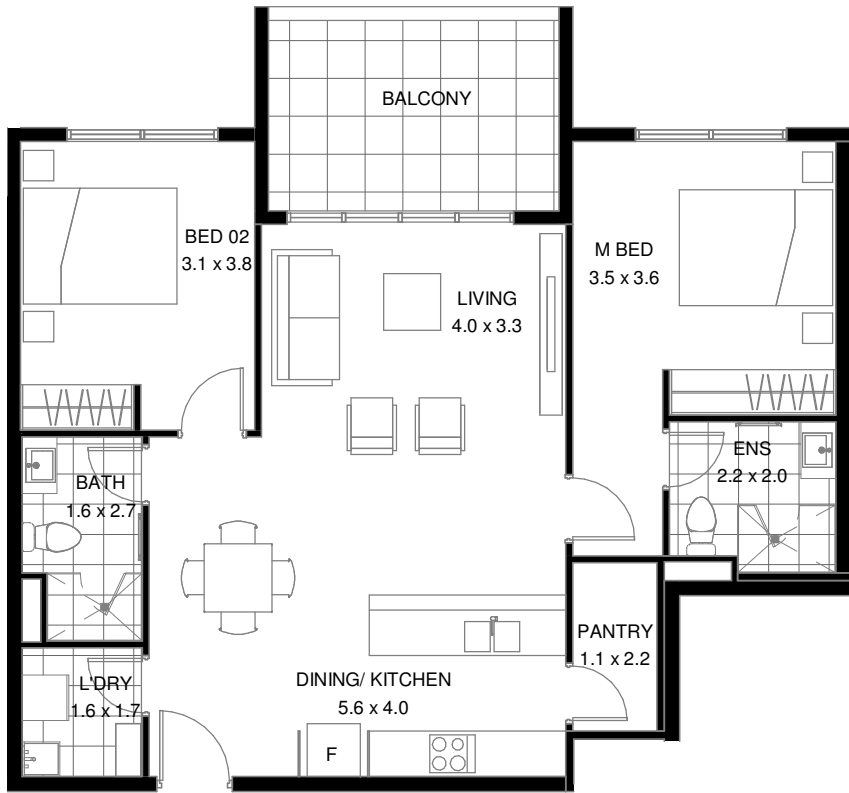


1300 228 452 sales@bathla.com.au

Disclaimer: The information and illustrations in this document are indicative only and are subject to the terms of the contract for sale and the strata plan in the contract for sale. Any furniture or fixtures depicted are illustrative only and not part of the property sold. The contract for saleshow's inclusions sold with the property. Purchasers must rely on their enquiries and the information in the contract for sale.

LERIDA & RUGBY STREET, SCHOFIELDS




PELICANA GREEN

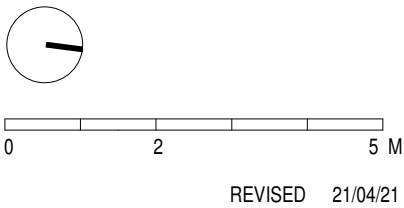


2 BEDROOM

LEVEL 01
APARTMENT 103/1



| | | |
|---|---|---|
|  |  |  |
| 2 | 2 | 1 |
| Internal Area: | 78.2 m ² | |
| External Area: | 9.6 m ² | |
| Total Area: | 87.8 m ² | |





1300 228 452 sales@bathla.com.au

Disclaimer: The information and illustrations in this document are indicative only and are subject to the terms of the contract for sale and the strata plan in the contract for sale. Any furniture or fixtures depicted are illustrative only and not part of the property sold. The contract for saleshow's inclusions sold with the property. Purchasers must rely on their enquiries and the information in the contract for sale.

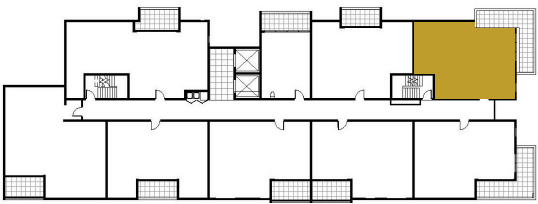
LERIDA & RUGBY STREET, SCHOFIELDS

PELICANA GREEN

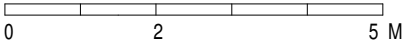


2 BEDROOM

LEVEL 01
APARTMENT 104/1



Internal Area: 79.0 m²
External Area: 17.6 m²
Total Area: 96.6 m²



REVISED 21/04/21

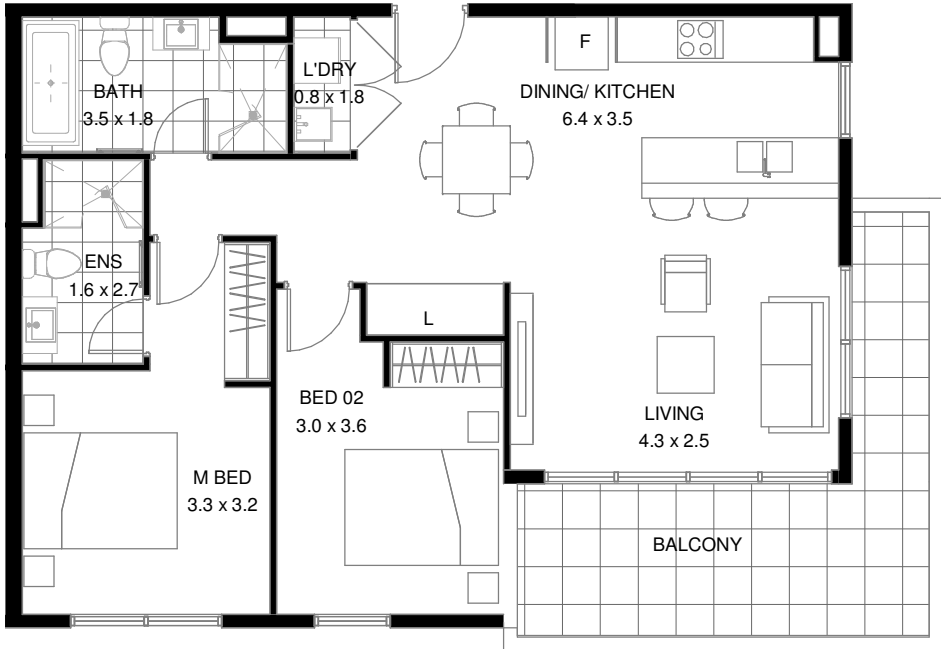


1300 228 452 sales@bathla.com.au

Disclaimer: The information and illustrations in this document are indicative only and are subject to the terms of the contract for sale and the strata plan in the contract for sale. Any furniture or fixtures depicted are illustrative only and not part of the property sold. The contract for saleshow's inclusions sold with the property. Purchasers must rely on their enquiries and the information in the contract for sale.

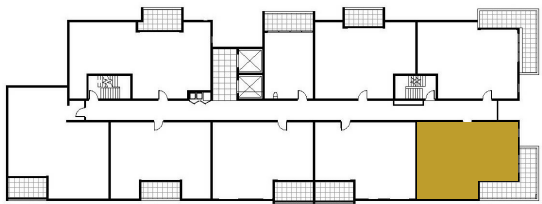
LERIDA & RUGBY STREET, SCHOFIELDS

PELICANA GREEN



2 BEDROOM

LEVEL 01
APARTMENT 105/1



Internal Area: 76.1 m²
External Area: 14.7 m²
Total Area: 90.8 m²



REVISED 21/04/21

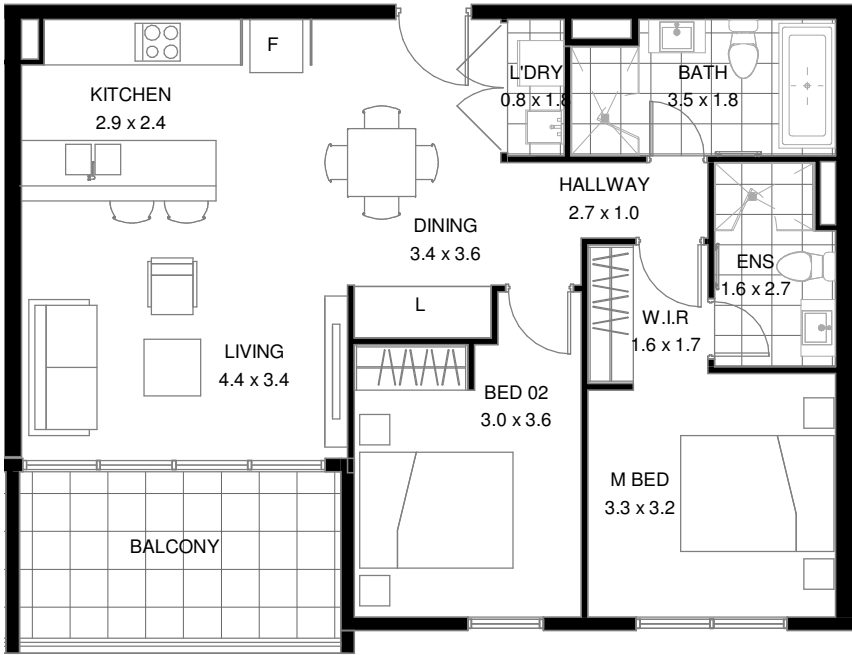


1300 228 452 sales@bathla.com.au

Disclaimer: The information and illustrations in this document are indicative only and are subject to the terms of the contract for sale and the strata plan in the contract for sale. Any furniture or fixtures depicted are illustrative only and not part of the property sold. The contract for saleshow's inclusions sold with the property. Purchasers must rely on their enquiries and the information in the contract for sale.

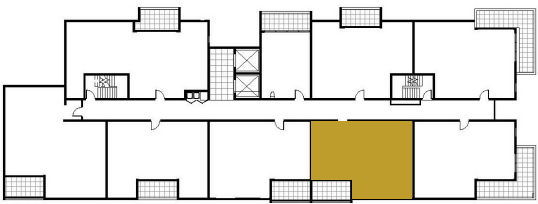
LERIDA & RUGBY STREET, SCHOFIELDS

PELICANA GREEN



2 BEDROOM

LEVEL 01
APARTMENT 106/1



2

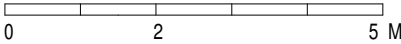


2



1

Internal Area: 75.1 m²
External Area: 10.2 m²
Total Area: 85.3 m²



REVISED 21/04/21



1300 228 452 sales@bathla.com.au

Disclaimer: The information and illustrations in this document are indicative only and are subject to the terms of the contract for sale and the strata plan in the contract for sale. Any furniture or fixtures depicted are illustrative only and not part of the property sold. The contract for saleshow's inclusions sold with the property. Purchasers must rely on their enquiries and the information in the contract for sale.

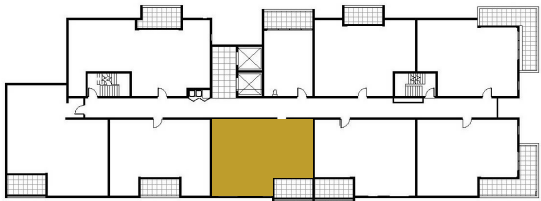
LERIDA & RUGBY STREET, SCHOFIELDS

PELICANA GREEN



2 BEDROOM

LEVEL 01
APARTMENT 107/1



Internal Area: 75.1 m²
External Area: 9.1 m²
Total Area: 84.2 m²



REVISED 21/04/21

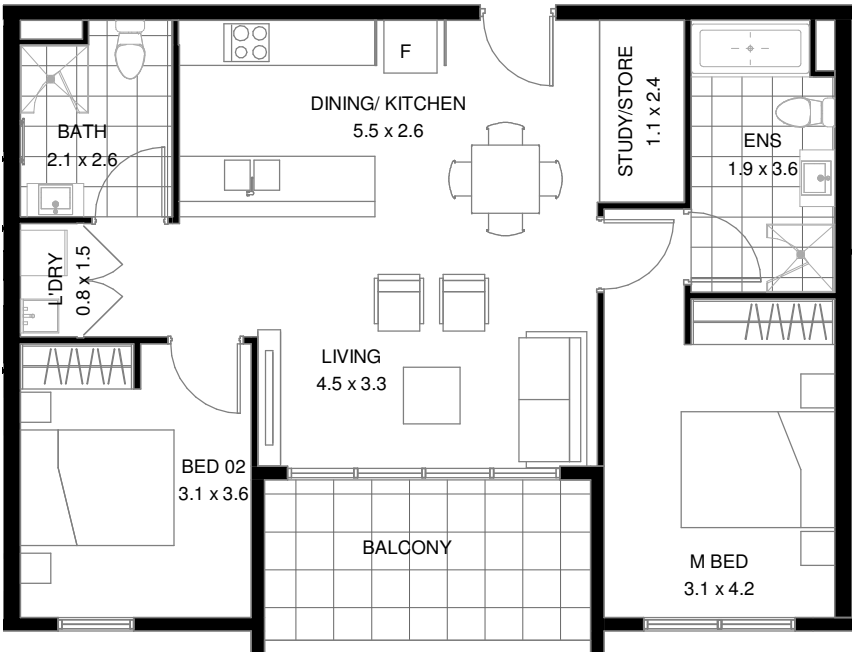


1300 228 452 sales@bathla.com.au

Disclaimer: The information and illustrations in this document are indicative only and are subject to the terms of the contract for sale and the strata plan in the contract for sale. Any furniture or fixtures depicted are illustrative only and not part of the property sold. The contract for saleshow's inclusions sold with the property. Purchasers must rely on their enquiries and the information in the contract for sale.

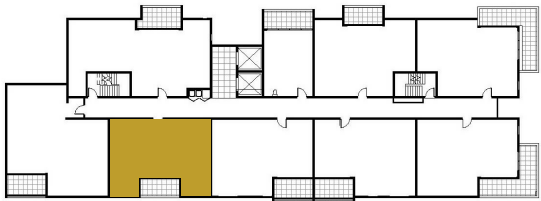
LERIDA & RUGBY STREET, SCHOFIELDS

PELICANA GREEN



2 BEDROOM

LEVEL 01
APARTMENT 108/1



Internal Area: 75.1 m²
External Area: 9.4 m²
Total Area: 84.5 m²



REVISED 21/04/21

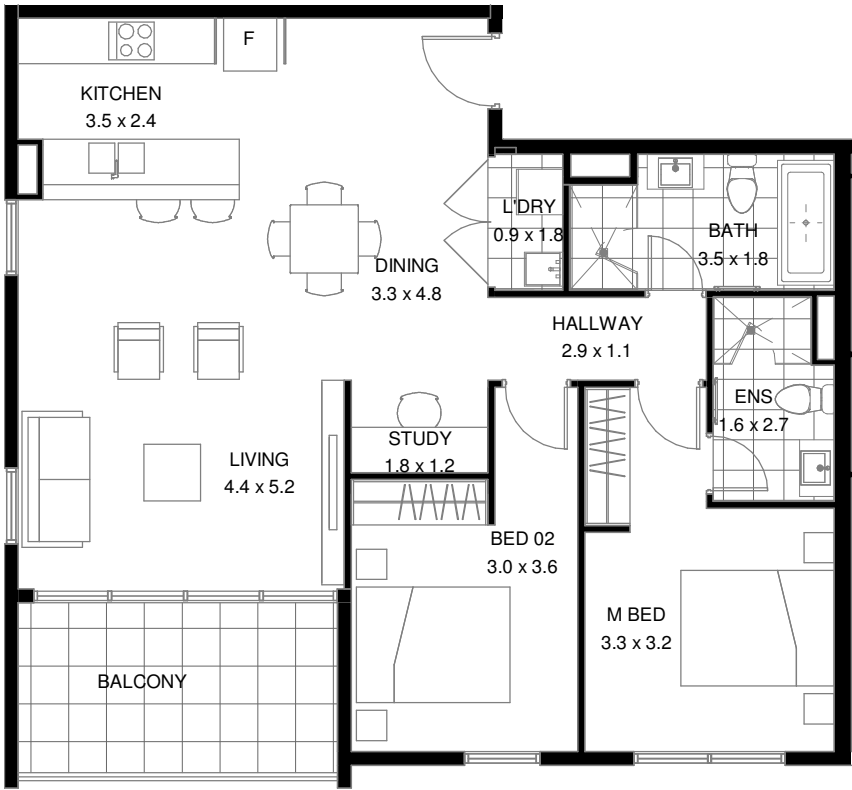


1300 228 452 sales@bathla.com.au

Disclaimer: The information and illustrations in this document are indicative only and are subject to the terms of the contract for sale and the strata plan in the contract for sale. Any furniture or fixtures depicted are illustrative only and not part of the property sold. The contract for saleshow's inclusions sold with the property. Purchasers must rely on their enquiries and the information in the contract for sale.

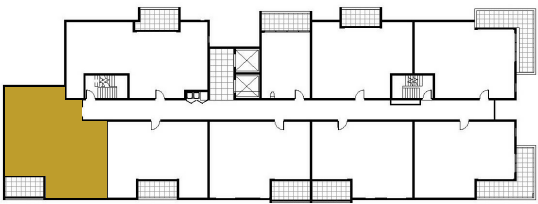
LERIDA & RUGBY STREET, SCHOFIELDS

PELICANA GREEN



2 BEDROOM

LEVEL 01
APARTMENT 109/1



2



2



1

Internal Area: 86.0 m²
External Area: 10.0 m²
Total Area: 96.0 m²



REVISED 21/04/21



1300 228 452 sales@bathla.com.au

Disclaimer: The information and illustrations in this document are indicative only and are subject to the terms of the contract for sale and the strata plan in the contract for sale. Any furniture or fixtures depicted are illustrative only and not part of the property sold. The contract for saleshow's inclusions sold with the property. Purchasers must rely on their enquiries and the information in the contract for sale.

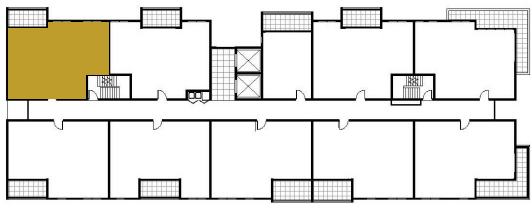
LERIDA & RUGBY STREET, SCHOFIELDS

PELICANA GREEN



2 BEDROOM

LEVEL 02
APARTMENT 201/1



Internal Area: 79.1 m²
External Area: 10.1 m²
Total Area: 89.2 m²



REVISED 21/04/21

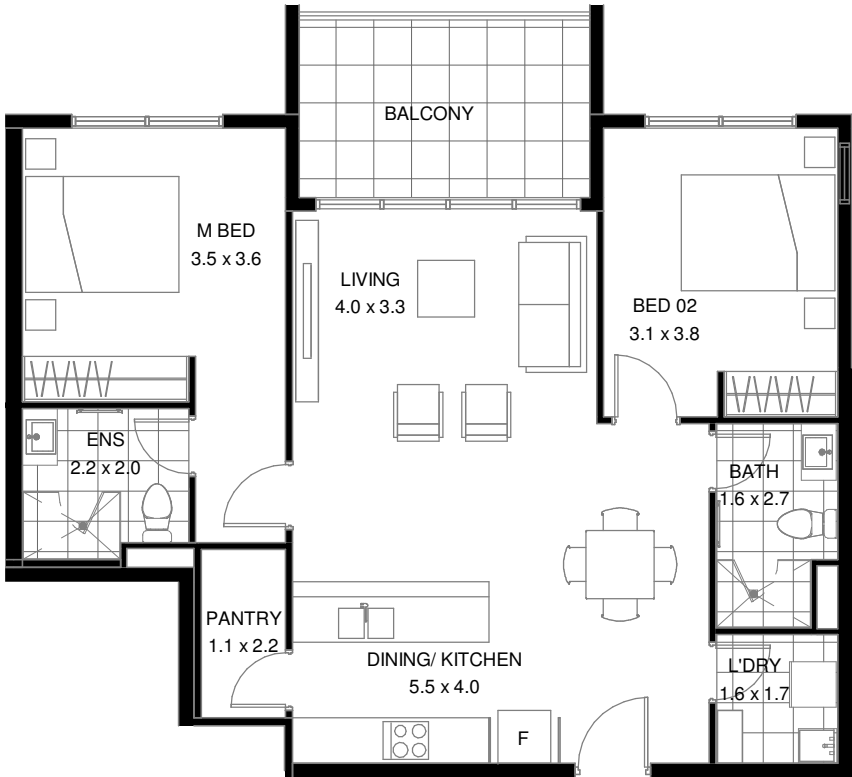


1300 228 452 sales@bathla.com.au

Disclaimer: The information and illustrations in this document are indicative only and are subject to the terms of the contract for sale and the strata plan in the contract for sale. Any furniture or fixtures depicted are illustrative only and not part of the property sold. The contract for saleshow's inclusions sold with the property. Purchasers must rely on their enquiries and the information in the contract for sale.

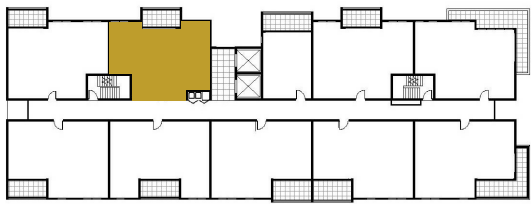
LERIDA & RUGBY STREET, SCHOFIELDS

PELICANA GREEN



2 BEDROOM

LEVEL 02
APARTMENT 202/1



Internal Area: 78.3 m²
External Area: 9.8 m²
Total Area: 88.1 m²



REVISED 21/04/21

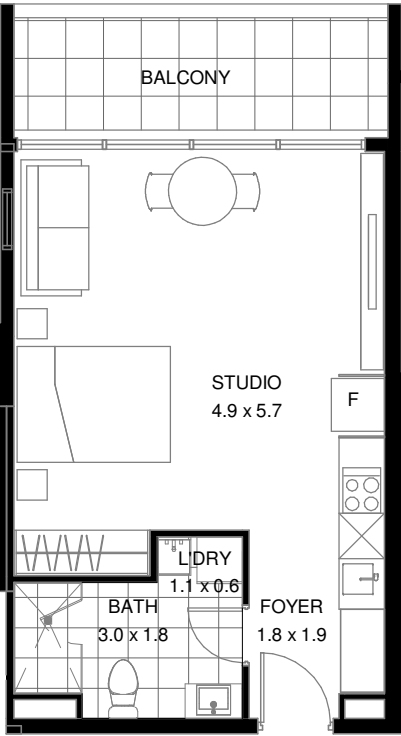


1300 228 452 sales@bathla.com.au

Disclaimer: The information and illustrations in this document are indicative only and are subject to the terms of the contract for sale and the strata plan in the contract for sale. Any furniture or fixtures depicted are illustrative only and not part of the property sold. The contract for saleshow's inclusions sold with the property. Purchasers must rely on their enquiries and the information in the contract for sale.

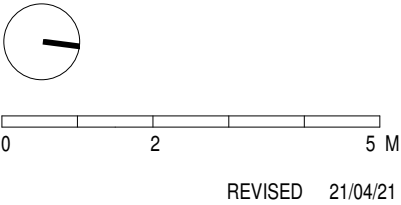
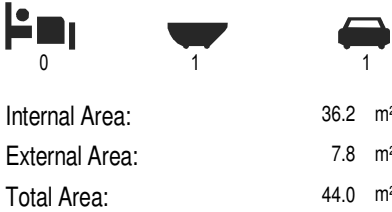
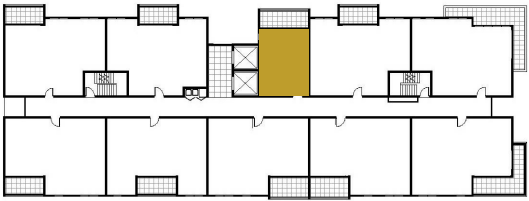
LERIDA & RUGBY STREET, SCHOFIELDS

PELICANA GREEN



STUDIO

LEVEL 02
APARTMENT 203/1



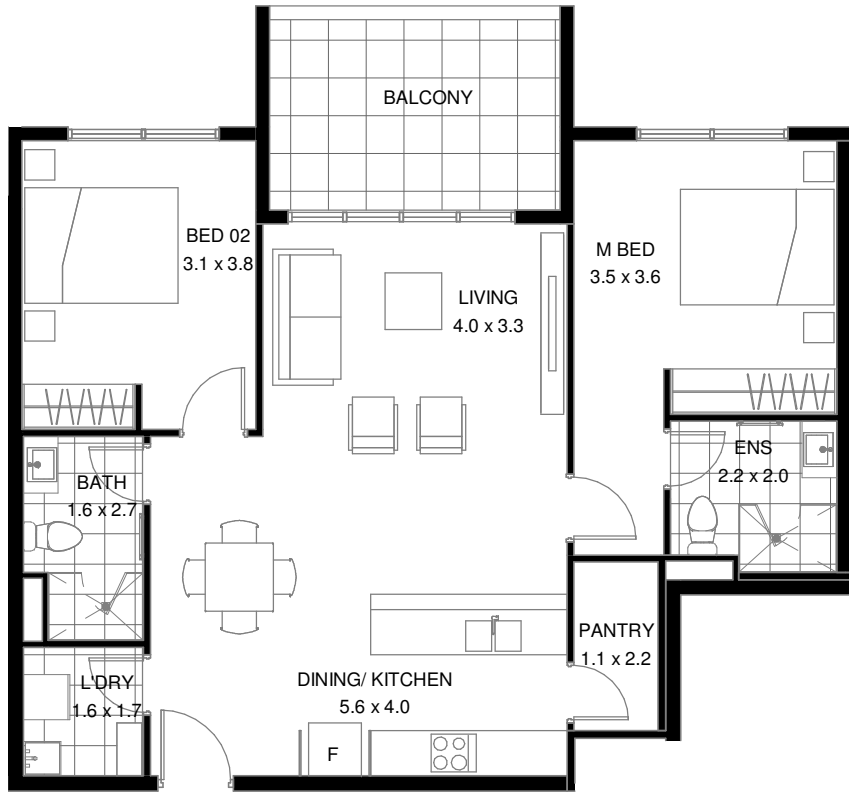
**Bathla**

1300 228 452 sales@bathla.com.au

Disclaimer: The information and illustrations in this document are indicative only and are subject to the terms of the contract for sale and the strata plan in the contract for sale. Any furniture or fixtures depicted are illustrative only and not part of the property sold. The contract for saleshow's inclusions sold with the property. Purchasers must rely on their enquiries and the information in the contract for sale.

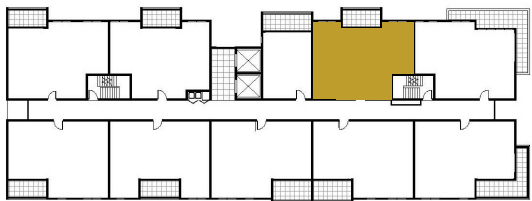
LERIDA & RUGBY STREET, SCHOFIELDS

PELICANA GREEN



2 BEDROOM

LEVEL 02
APARTMENT 204/1



Internal Area: 78.2 m²
External Area: 9.6 m²
Total Area: 87.8 m²



REVISED 21/04/21

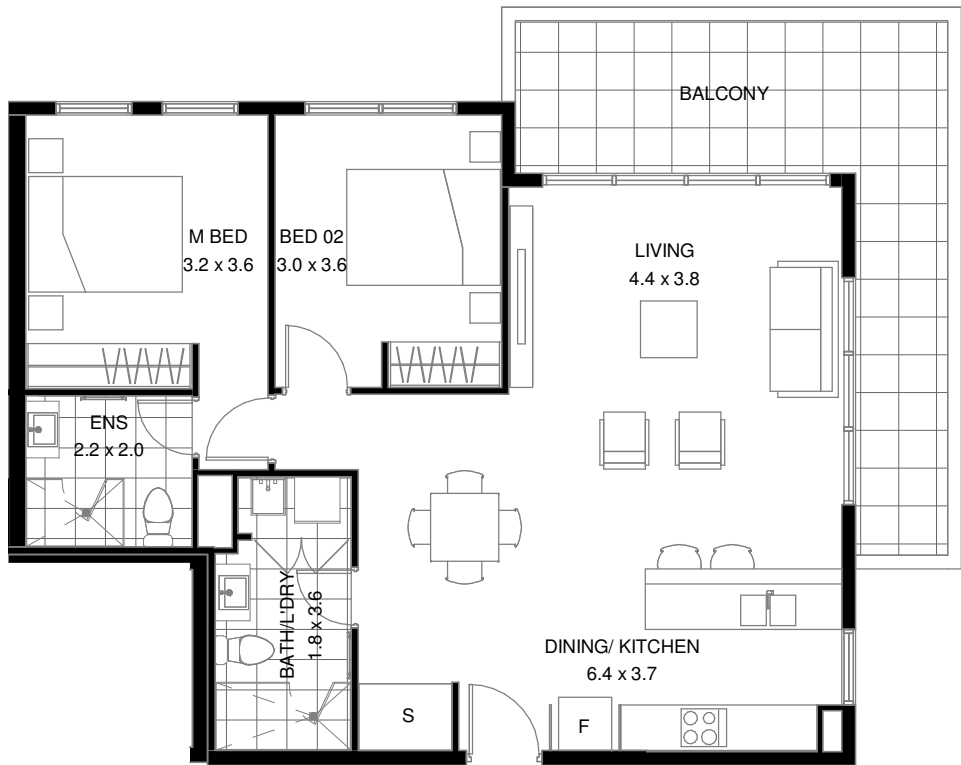


1300 228 452 sales@bathla.com.au

Disclaimer: The information and illustrations in this document are indicative only and are subject to the terms of the contract for sale and the strata plan in the contract for sale. Any furniture or fixtures depicted are illustrative only and not part of the property sold. The contract for saleshow's inclusions sold with the property. Purchasers must rely on their enquiries and the information in the contract for sale.

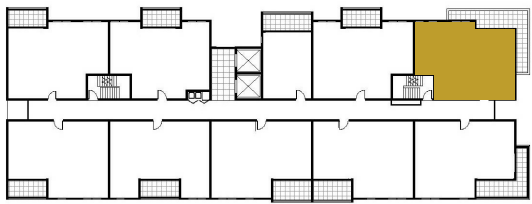
LERIDA & RUGBY STREET, SCHOFIELDS

PELICANA GREEN



2 BEDROOM

LEVEL 02
APARTMENT 205/1



Internal Area: 78.8 m²
External Area: 17.6 m²
Total Area: 96.4 m²



REVISED 21/04/21

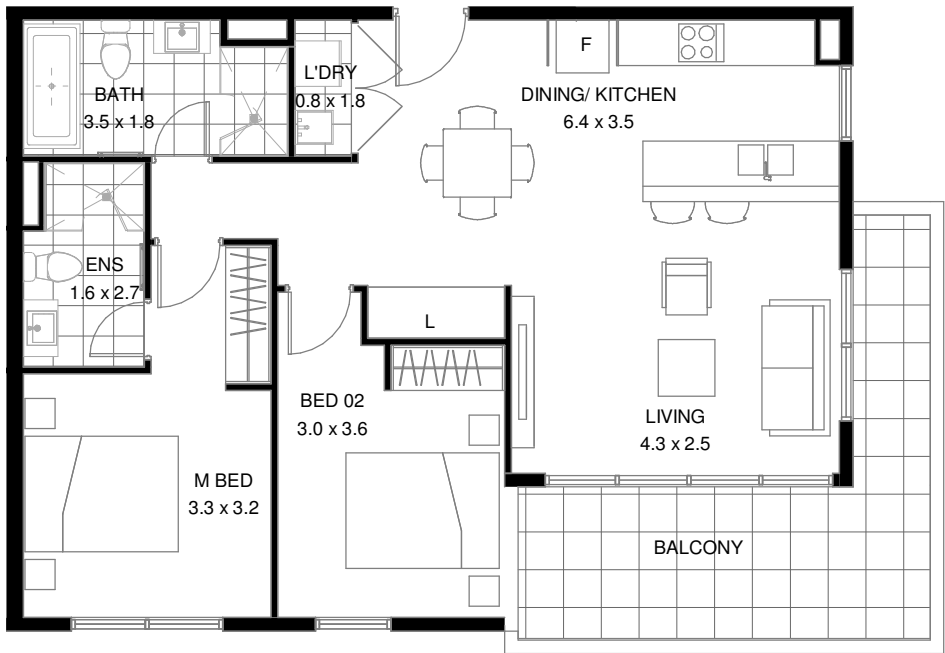


1300 228 452 sales@bathla.com.au

Disclaimer: The information and illustrations in this document are indicative only and are subject to the terms of the contract for sale and the strata plan in the contract for sale. Any furniture or fixtures depicted are illustrative only and not part of the property sold. The contract for saleshow's inclusions sold with the property. Purchasers must rely on their enquiries and the information in the contract for sale.

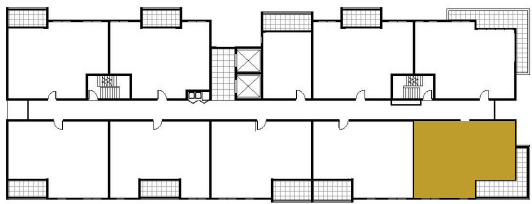
LERIDA & RUGBY STREET, SCHOFIELDS

PELICANA GREEN



2 BEDROOM

LEVEL 02
APARTMENT 206/1



Internal Area: 76.1 m²
External Area: 14.7 m²
Total Area: 90.8 m²



REVISED 21/04/21

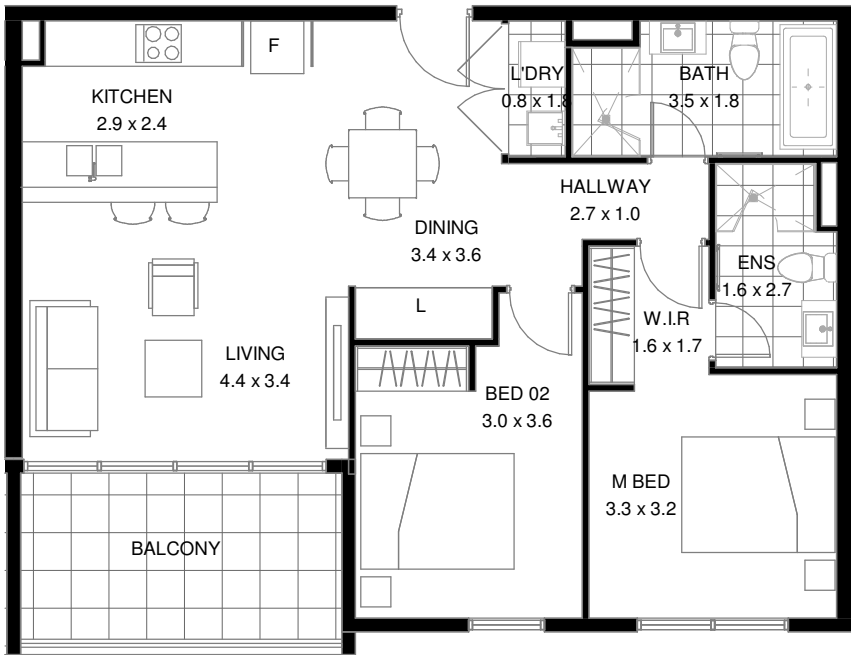


1300 228 452 sales@bathla.com.au

Disclaimer: The information and illustrations in this document are indicative only and are subject to the terms of the contract for sale and the strata plan in the contract for sale. Any furniture or fixtures depicted are illustrative only and not part of the property sold. The contract for saleshow's inclusions sold with the property. Purchasers must rely on their enquiries and the information in the contract for sale.

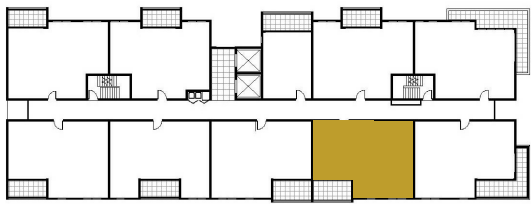
LERIDA & RUGBY STREET, SCHOFIELDS

PELICANA GREEN



2 BEDROOM

LEVEL 02
APARTMENT 207/1



Internal Area: 75.1 m²
External Area: 10.2 m²
Total Area: 85.3 m²



REVISED 21/04/21



1300 228 452 sales@bathla.com.au

Disclaimer: The information and illustrations in this document are indicative only and are subject to the terms of the contract for sale and the strata plan in the contract for sale. Any furniture or fixtures depicted are illustrative only and not part of the property sold. The contract for saleshow's inclusions sold with the property. Purchasers must rely on their enquiries and the information in the contract for sale.

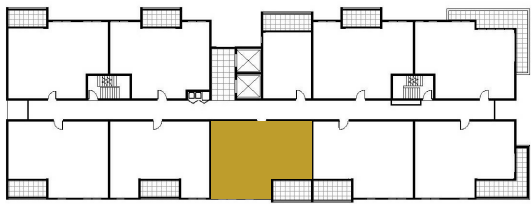
LERIDA & RUGBY STREET, SCHOFIELDS

PELICANA GREEN



2 BEDROOM

LEVEL 02
APARTMENT 208/1



Internal Area: 75.1 m²
External Area: 10.4 m²
Total Area: 85.5 m²



REVISED 21/04/21

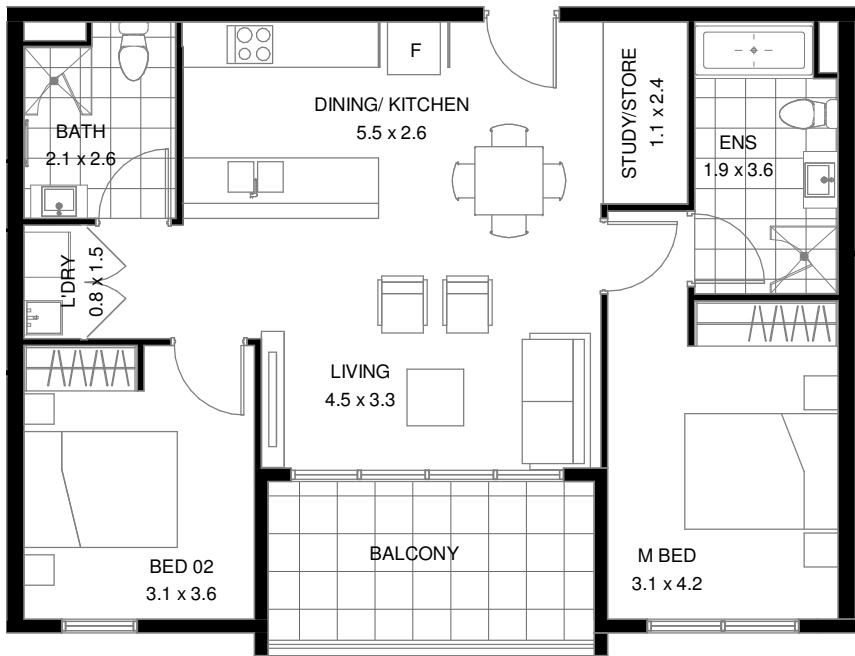


1300 228 452 sales@bathla.com.au

Disclaimer: The information and illustrations in this document are indicative only and are subject to the terms of the contract for sale and the strata plan in the contract for sale. Any furniture or fixtures depicted are illustrative only and not part of the property sold. The contract for saleshow's inclusions sold with the property. Purchasers must rely on their enquiries and the information in the contract for sale.

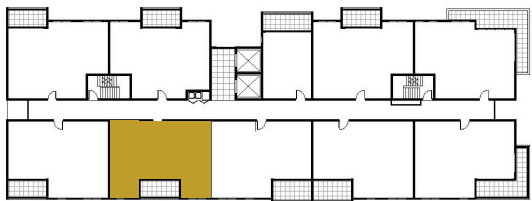
LERIDA & RUGBY STREET, SCHOFIELDS

PELICANA GREEN



2 BEDROOM

LEVEL 02
APARTMENT 209/1



Internal Area: 75.18 m²
External Area: 9.9 m²
Total Area: 85.08 m²



REVISED 21/04/21

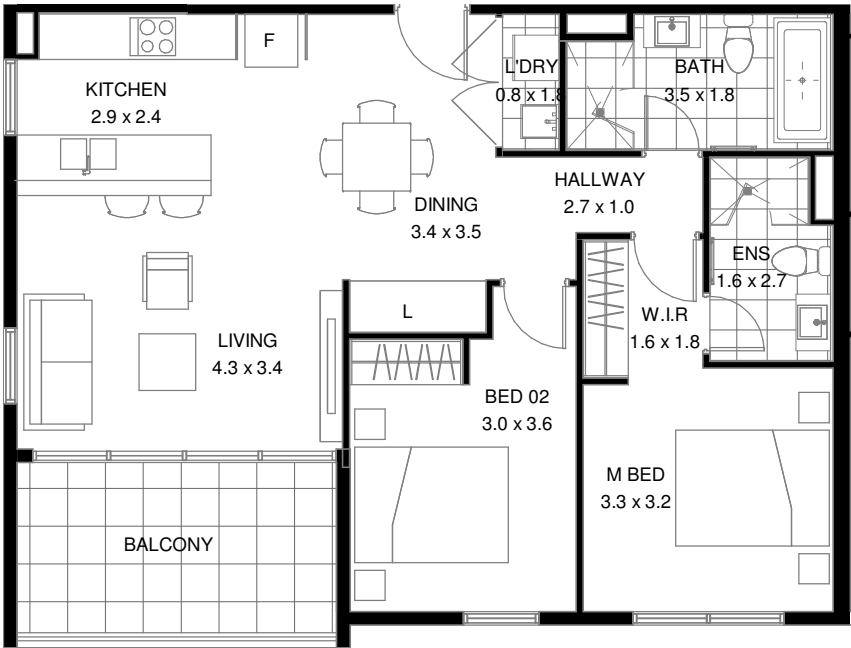


1300 228 452 sales@bathla.com.au

Disclaimer: The information and illustrations in this document are indicative only and are subject to the terms of the contract for sale and the strata plan in the contract for sale. Any furniture or fixtures depicted are illustrative only and not part of the property sold. The contract for saleshow's inclusions sold with the property. Purchasers must rely on their enquiries and the information in the contract for sale.

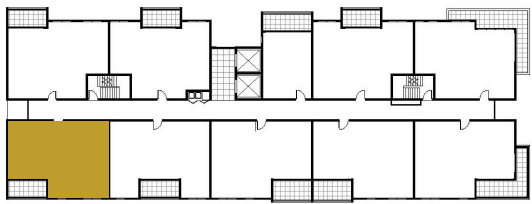
LERIDA & RUGBY STREET, SCHOFIELDS

PELICANA GREEN



2 BEDROOM

LEVEL 02
APARTMENT 210/1



Internal Area: 75.0 m²
External Area: 10.3 m²
Total Area: 85.3 m²



REVISED 21/04/21

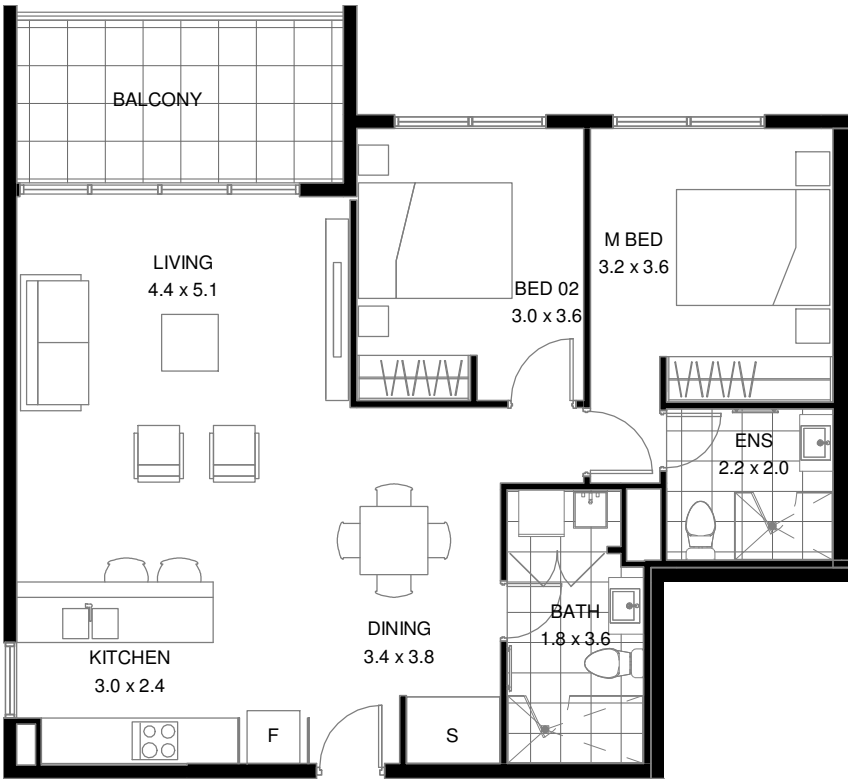


1300 228 452 sales@bathla.com.au

Disclaimer: The information and illustrations in this document are indicative only and are subject to the terms of the contract for sale and the strata plan in the contract for sale. Any furniture or fixtures depicted are illustrative only and not part of the property sold. The contract for saleshow's inclusions sold with the property. Purchasers must rely on their enquiries and the information in the contract for sale.

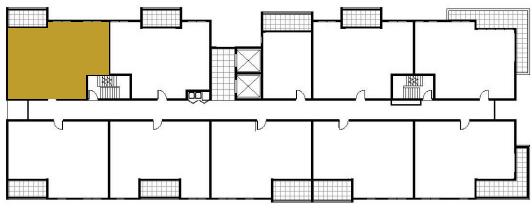
LERIDA & RUGBY STREET, SCHOFIELDS

PELICANA GREEN



2 BEDROOM

LEVEL 03
APARTMENT 301/1



2



2



1

Internal Area: 79.1 m²
External Area: 10.1 m²
Total Area: 89.2 m²



REVISED 21/04/21

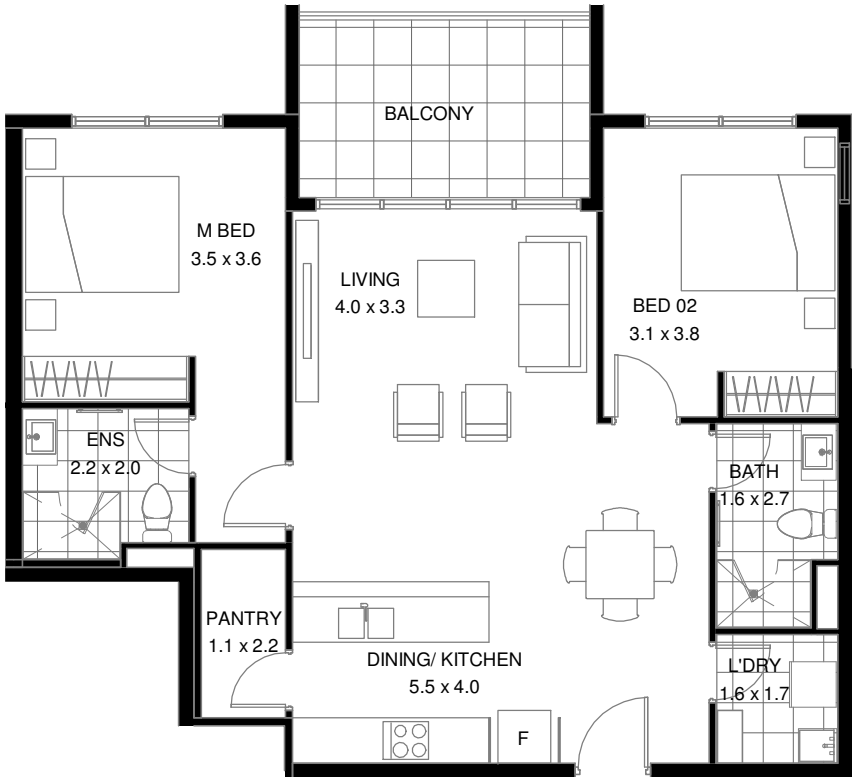


1300 228 452 sales@bathla.com.au

Disclaimer: The information and illustrations in this document are indicative only and are subject to the terms of the contract for sale and the strata plan in the contract for sale. Any furniture or fixtures depicted are illustrative only and not part of the property sold. The contract for saleshow's inclusions sold with the property. Purchasers must rely on their enquiries and the information in the contract for sale.

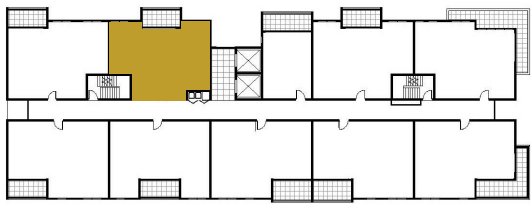
LERIDA & RUGBY STREET, SCHOFIELDS

PELICANA GREEN



2 BEDROOM

LEVEL 03
APARTMENT 302/1



Internal Area: 78.3 m²
External Area: 9.8 m²
Total Area: 88.1 m²



REVISED 21/04/21

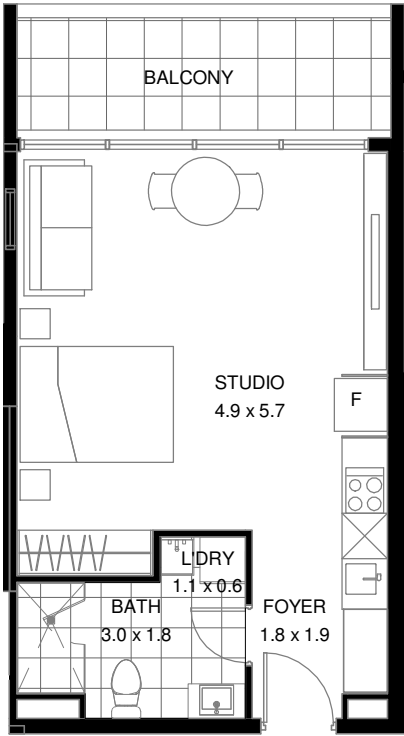


1300 228 452 sales@bathla.com.au

Disclaimer: The information and illustrations in this document are indicative only and are subject to the terms of the contract for sale and the strata plan in the contract for sale. Any furniture or fixtures depicted are illustrative only and not part of the property sold. The contract for saleshow's inclusions sold with the property. Purchasers must rely on their enquiries and the information in the contract for sale.

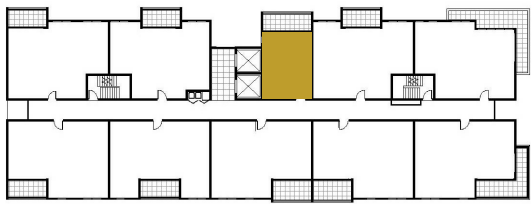
LERIDA & RUGBY STREET, SCHOFIELDS




PELICANA GREEN

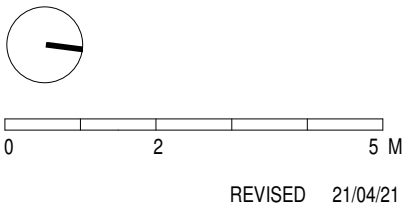


STUDIO

LEVEL 03
APARTMENT 303/1



| | | |
|---|---|---|
|  |  |  |
| 0 | 1 | 1 |
| Internal Area: | 36.2 m ² | |
| External Area: | 7.8 m ² | |
| Total Area: | 44.0 m ² | |



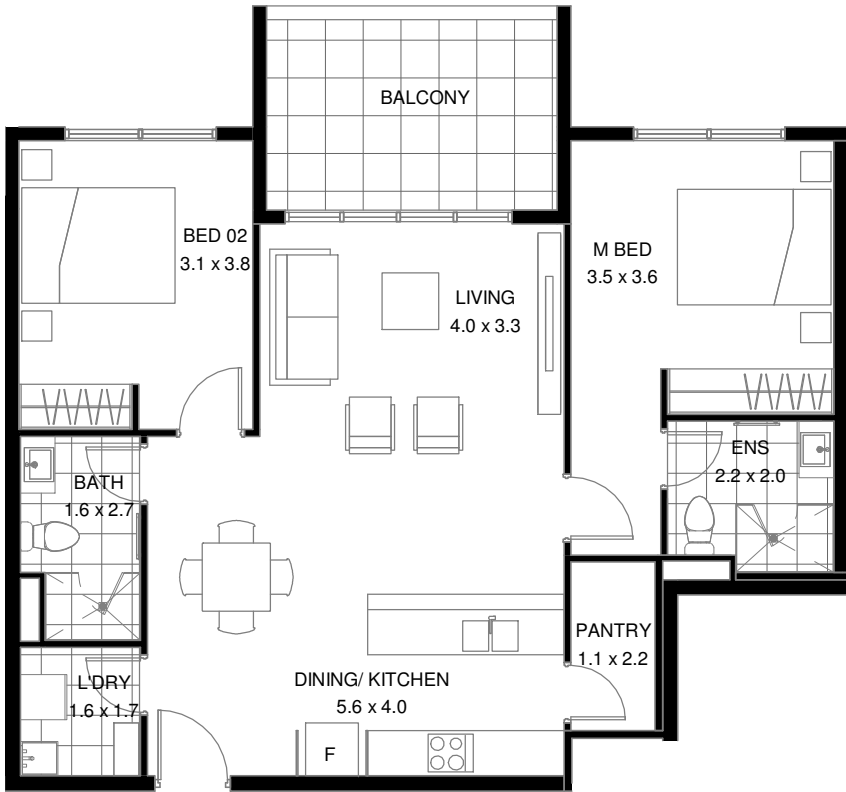


1300 228 452 sales@bathla.com.au

Disclaimer: The information and illustrations in this document are indicative only and are subject to the terms of the contract for sale and the strata plan in the contract for sale. Any furniture or fixtures depicted are illustrative only and not part of the property sold. The contract for saleshow's inclusions sold with the property. Purchasers must rely on their enquiries and the information in the contract for sale.

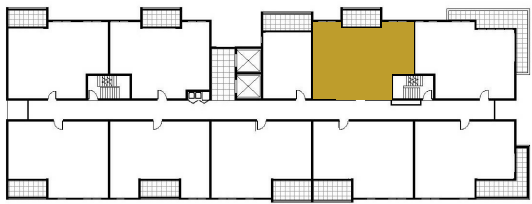
LERIDA & RUGBY STREET, SCHOFIELDS




PELICANA GREEN

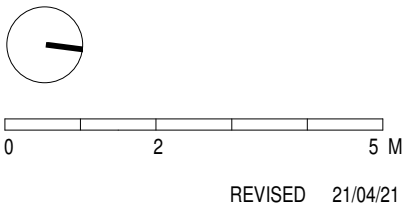


2 BEDROOM

LEVEL 03
APARTMENT 304/1



| | | |
|---|---|---|
|  |  |  |
| 2 | 2 | 1 |
| Internal Area: | 78.2 m ² | |
| External Area: | 9.6 m ² | |
| Total Area: | 87.8 m ² | |



**Bathla**

1300 228 452 sales@bathla.com.au

Disclaimer: The information and illustrations in this document are indicative only and are subject to the terms of the contract for sale and the strata plan in the contract for sale. Any furniture or fixtures depicted are illustrative only and not part of the property sold. The contract for saleshow's inclusions sold with the property. Purchasers must rely on their enquiries and the information in the contract for sale.

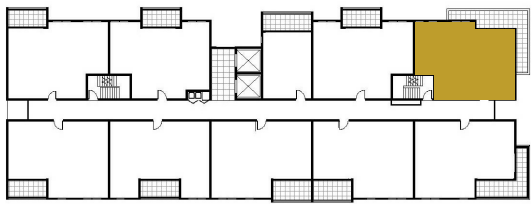
LERIDA & RUGBY STREET, SCHOFIELDS

PELICANA GREEN



2 BEDROOM

LEVEL 03
APARTMENT 305/1



Internal Area: 78.8 m²
External Area: 17.6 m²
Total Area: 96.4 m²



REVISED 21/04/21

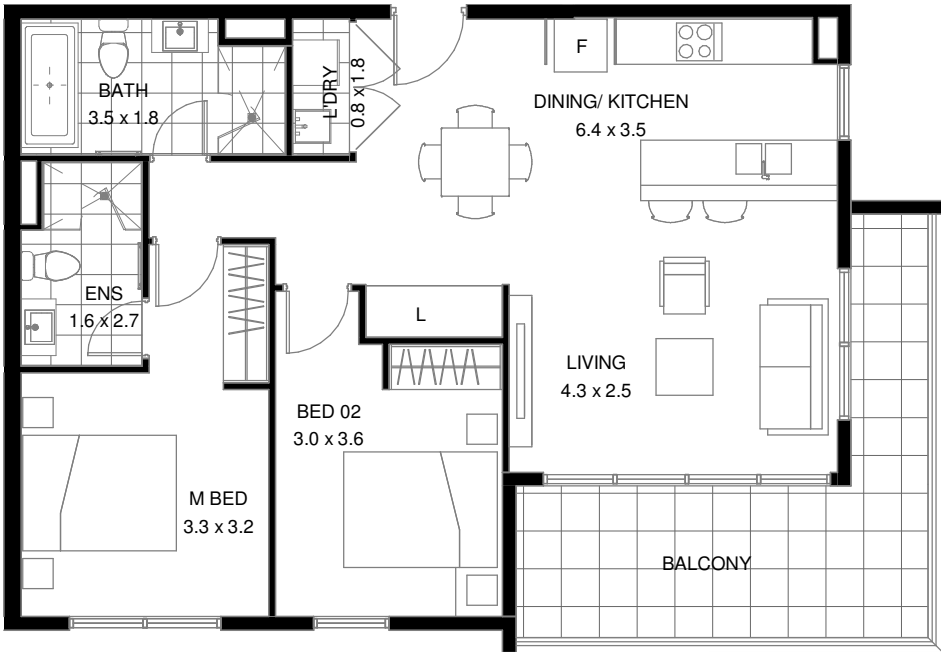


1300 228 452 sales@bathla.com.au

Disclaimer: The information and illustrations in this document are indicative only and are subject to the terms of the contract for sale and the strata plan in the contract for sale. Any furniture or fixtures depicted are illustrative only and not part of the property sold. The contract for saleshow's inclusions sold with the property. Purchasers must rely on their enquiries and the information in the contract for sale.

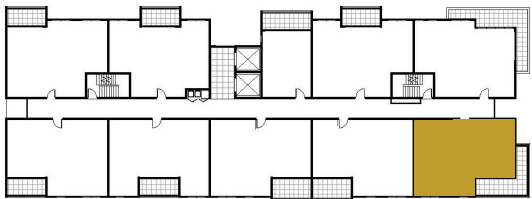
LERIDA & RUGBY STREET, SCHOFIELDS

PELICANA GREEN



2 BEDROOM

LEVEL 03
APARTMENT 306/1



Internal Area: 76.1 m²
External Area: 16.8 m²
Total Area: 92.9 m²



REVISED 21/04/21

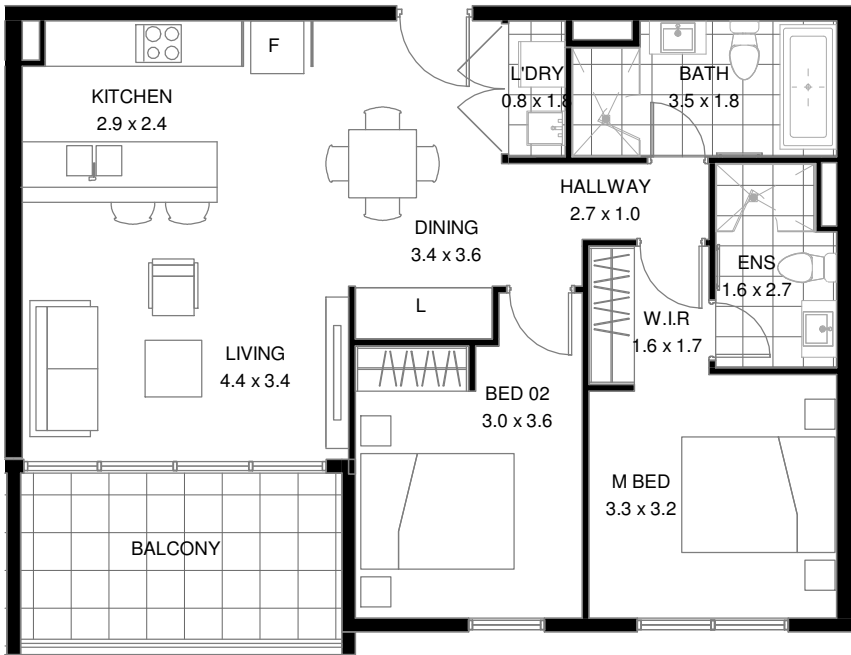


1300 228 452 sales@bathla.com.au

Disclaimer: The information and illustrations in this document are indicative only and are subject to the terms of the contract for sale and the strata plan in the contract for sale. Any furniture or fixtures depicted are illustrative only and not part of the property sold. The contract for saleshow's inclusions sold with the property. Purchasers must rely on their enquiries and the information in the contract for sale.

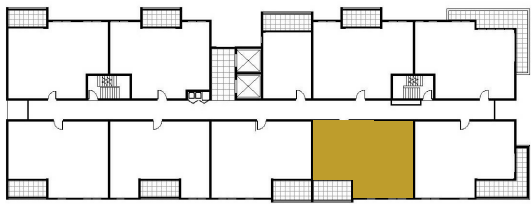
LERIDA & RUGBY STREET, SCHOFIELDS

PELICANA GREEN



2 BEDROOM

LEVEL 03
APARTMENT 307/1



Internal Area: 75.1 m²
External Area: 10.2 m²
Total Area: 85.3 m²



REVISED 21/04/21



1300 228 452 sales@bathla.com.au

Disclaimer: The information and illustrations in this document are indicative only and are subject to the terms of the contract for sale and the strata plan in the contract for sale. Any furniture or fixtures depicted are illustrative only and not part of the property sold. The contract for saleshow's inclusions sold with the property. Purchasers must rely on their enquiries and the information in the contract for sale.

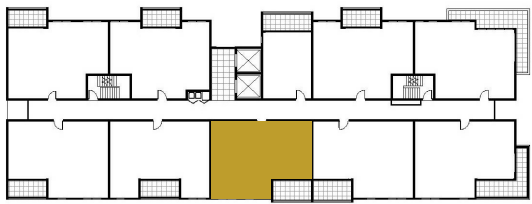
LERIDA & RUGBY STREET, SCHOFIELDS

PELICANA GREEN



2 BEDROOM

LEVEL 03
APARTMENT 308/1



2



2



1

Internal Area: 75.1 m²
External Area: 10.4 m²
Total Area: 85.5 m²



REVISED 21/04/21

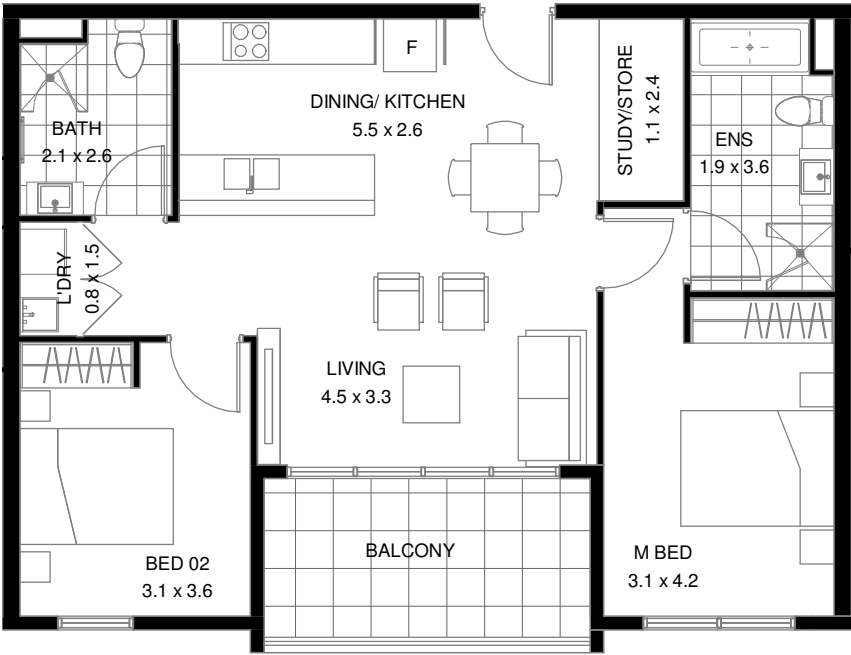


1300 228 452 sales@bathla.com.au

Disclaimer: The information and illustrations in this document are indicative only and are subject to the terms of the contract for sale and the strata plan in the contract for sale. Any furniture or fixtures depicted are illustrative only and not part of the property sold. The contract for saleshow's inclusions sold with the property. Purchasers must rely on their enquiries and the information in the contract for sale.

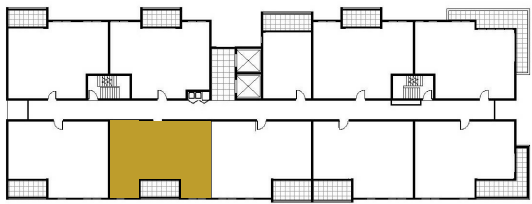
LERIDA & RUGBY STREET, SCHOFIELDS

PELICANA GREEN



2 BEDROOM

LEVEL 03
APARTMENT 309/1



Internal Area: 75.18 m²
External Area: 9.9 m²
Total Area: 85.08 m²



REVISED 21/04/21

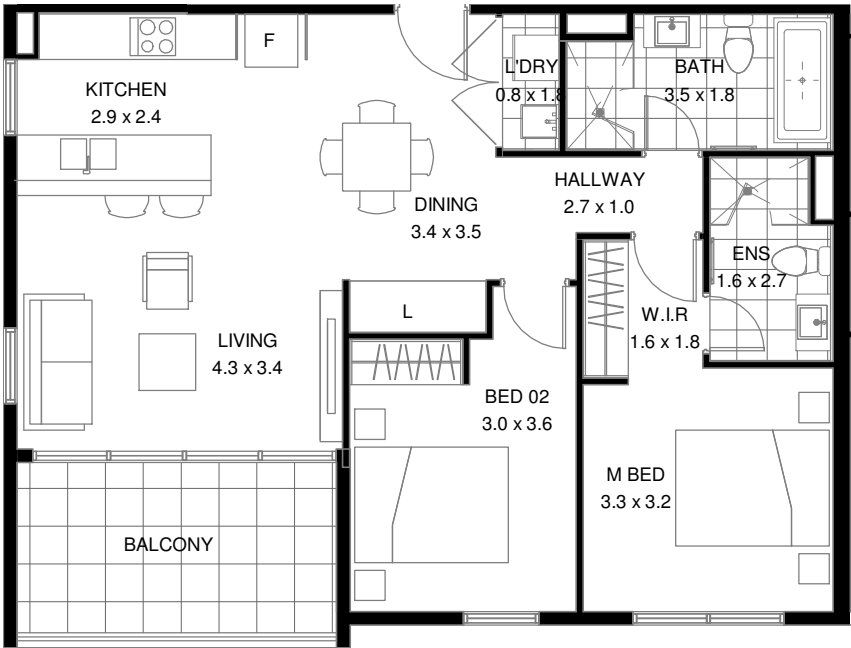


1300 228 452 sales@bathla.com.au

Disclaimer: The information and illustrations in this document are indicative only and are subject to the terms of the contract for sale and the strata plan in the contract for sale. Any furniture or fixtures depicted are illustrative only and not part of the property sold. The contract for saleshow's inclusions sold with the property. Purchasers must rely on their enquiries and the information in the contract for sale.

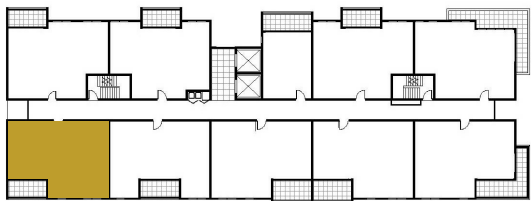
LERIDA & RUGBY STREET, SCHOFIELDS

PELICANA GREEN



2 BEDROOM

LEVEL 03
APARTMENT 310/1



Internal Area: 75.0 m²
External Area: 10.3 m²
Total Area: 85.3 m²



REVISED 21/04/21

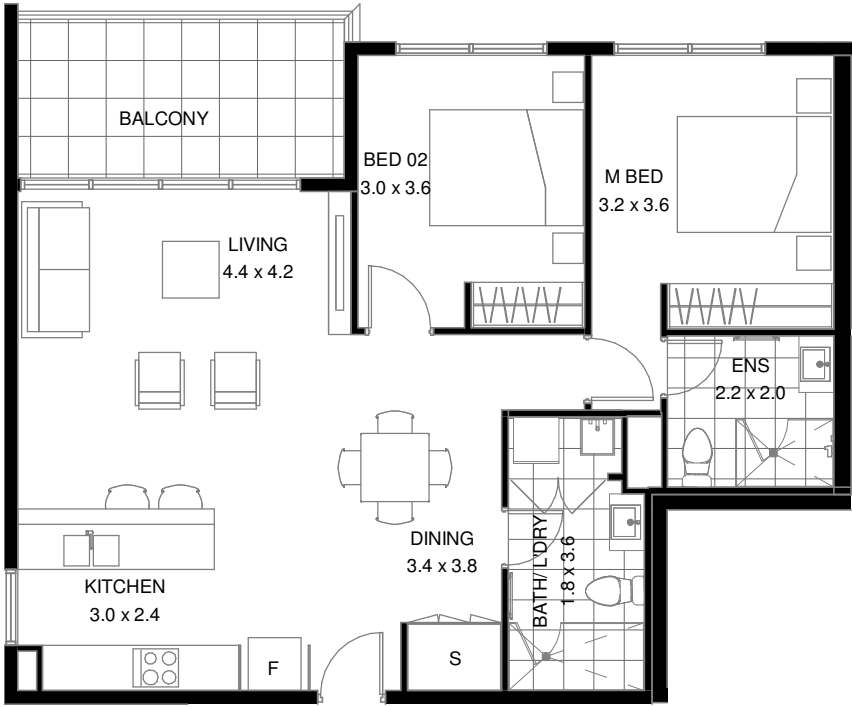


1300 228 452 sales@bathla.com.au

Disclaimer: The information and illustrations in this document are indicative only and are subject to the terms of the contract for sale and the strata plan in the contract for sale. Any furniture or fixtures depicted are illustrative only and not part of the property sold. The contract for saleshow's inclusions sold with the property. Purchasers must rely on their enquiries and the information in the contract for sale.

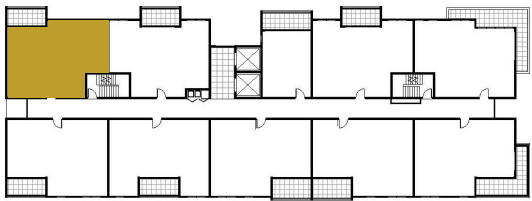
LERIDA & RUGBY STREET, SCHOFIELDS




PELICANA GREEN

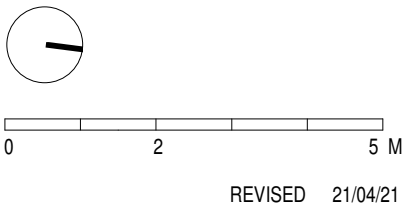


2 BEDROOM

LEVEL 04
APARTMENT 401/1



| | | |
|---|---|---|
|  |  |  |
| 2 | 2 | 1 |
| Internal Area: | 75.0 m ² | |
| External Area: | 10.0 m ² | |
| Total Area: | 85.1 m ² | |





1300 228 452 sales@bathla.com.au

Disclaimer: The information and illustrations in this document are indicative only and are subject to the terms of the contract for sale and the strata plan in the contract for sale. Any furniture or fixtures depicted are illustrative only and not part of the property sold. The contract for saleshow's inclusions sold with the property. Purchasers must rely on their enquiries and the information in the contract for sale.

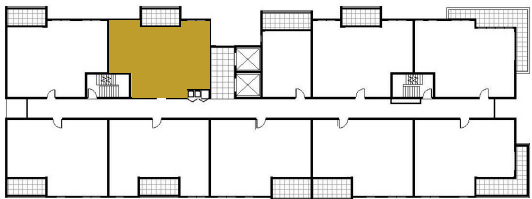
LERIDA & RUGBY STREET, SCHOFIELDS




PELICANA GREEN

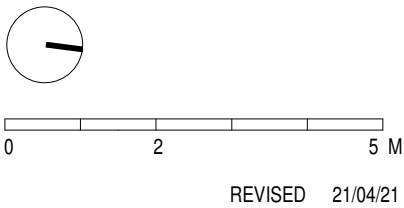


2 BEDROOM

LEVEL 04
APARTMENT 402/1



| | | |
|---|---|---|
|  |  |  |
| 2 | 2 | 1 |
| Internal Area: | 75.0 m ² | |
| External Area: | 9.6 m ² | |
| Total Area: | 84.6 m ² | |



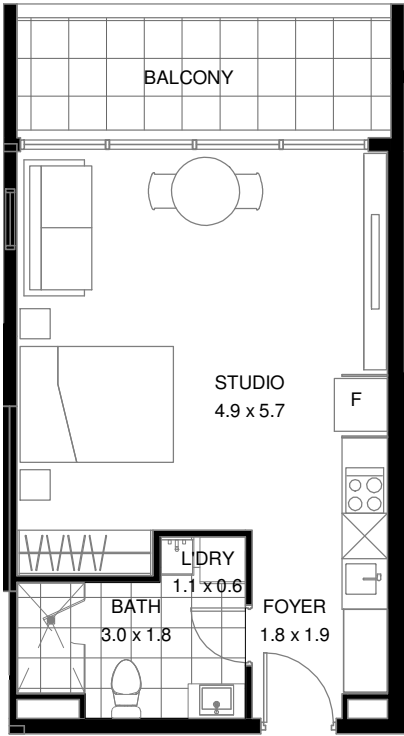
**Bathla**

1300 228 452 sales@bathla.com.au

Disclaimer: The information and illustrations in this document are indicative only and are subject to the terms of the contract for sale and the strata plan in the contract for sale. Any furniture or fixtures depicted are illustrative only and not part of the property sold. The contract for saleshow's inclusions sold with the property. Purchasers must rely on their enquiries and the information in the contract for sale.

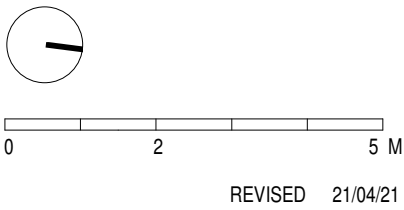
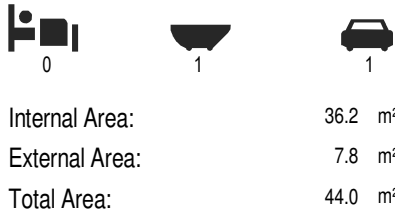
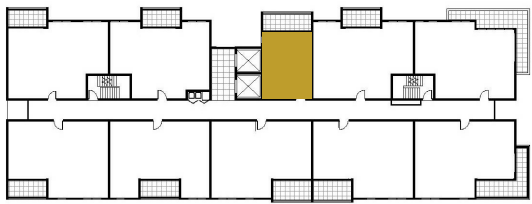
LERIDA & RUGBY STREET, SCHOFIELDS

PELICANA GREEN



STUDIO

LEVEL 04
APARTMENT 403/1



1300 228 452 sales@bathla.com.au

Disclaimer: The information and illustrations in this document are indicative only and are subject to the terms of the contract for sale and the strata plan in the contract for sale. Any furniture or fixtures depicted are illustrative only and not part of the property sold. The contract for saleshow's inclusions sold with the property. Purchasers must rely on their enquiries and the information in the contract for sale.

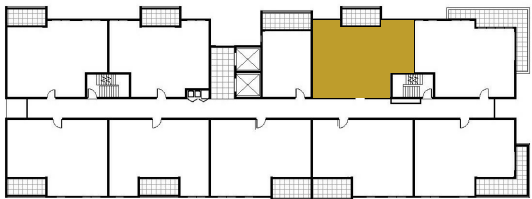
LERIDA & RUGBY STREET, SCHOFIELDS




PELICANA GREEN

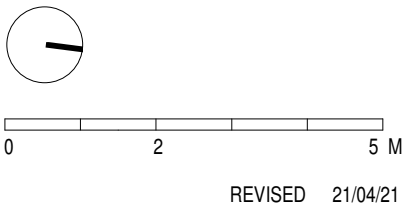


2 BEDROOM

LEVEL 04
APARTMENT 404/1



| | | |
|---|---|---|
|  |  |  |
| 2 | 2 | 1 |
| Internal Area: | 75.3 m ² | |
| External Area: | 10.1 m ² | |
| Total Area: | 85.4 m ² | |



**Bathla**

1300 228 452 sales@bathla.com.au

Disclaimer: The information and illustrations in this document are indicative only and are subject to the terms of the contract for sale and the strata plan in the contract for sale. Any furniture or fixtures depicted are illustrative only and not part of the property sold. The contract for saleshow's inclusions sold with the property. Purchasers must rely on their enquiries and the information in the contract for sale.

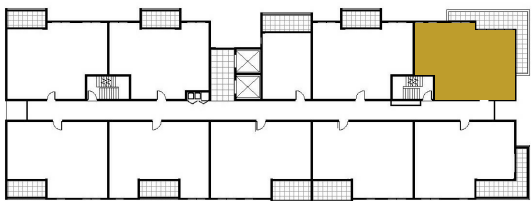
LERIDA & RUGBY STREET, SCHOFIELDS

PELICANA GREEN



2 BEDROOM

LEVEL 04
 APARTMENT 405/1



2



2



1

Internal Area: 75.1 m²
 External Area: 18.9 m²
 Total Area: 94.0 m²



REVISED 21/04/21

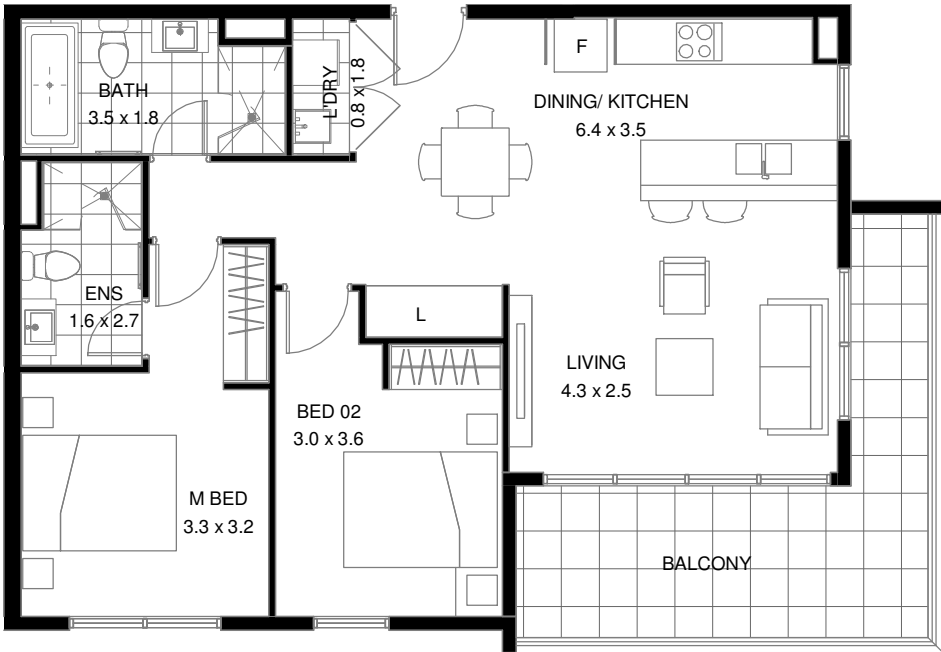


1300 228 452 sales@bathla.com.au

Disclaimer: The information and illustrations in this document are indicative only and are subject to the terms of the contract for sale and the strata plan in the contract for sale. Any furniture or fixtures depicted are illustrative only and not part of the property sold. The contract for saleshow's inclusions sold with the property. Purchasers must rely on their enquiries and the information in the contract for sale.

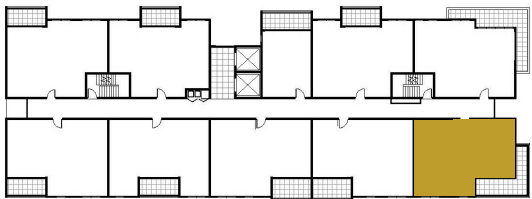
LERIDA & RUGBY STREET, SCHOFIELDS

PELICANA GREEN



2 BEDROOM

LEVEL 04
APARTMENT 406/1



Internal Area: 76.1 m²
External Area: 16.8 m²
Total Area: 92.9 m²



REVISED 21/04/21

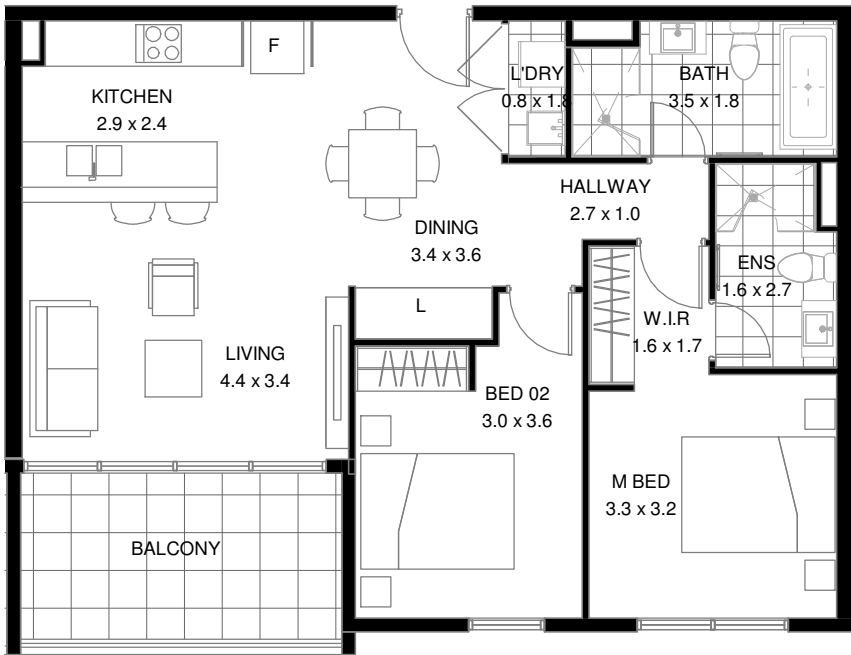


1300 228 452 sales@bathla.com.au

Disclaimer: The information and illustrations in this document are indicative only and are subject to the terms of the contract for sale and the strata plan in the contract for sale. Any furniture or fixtures depicted are illustrative only and not part of the property sold. The contract for saleshow's inclusions sold with the property. Purchasers must rely on their enquiries and the information in the contract for sale.

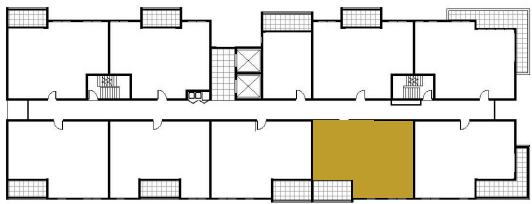
LERIDA & RUGBY STREET, SCHOFIELDS

PELICANA GREEN



2 BEDROOM

LEVEL 04
APARTMENT 407/1



Internal Area: 75.1 m²
External Area: 10.2 m²
Total Area: 85.3 m²



REVISED 21/04/21



1300 228 452 sales@bathla.com.au

Disclaimer: The information and illustrations in this document are indicative only and are subject to the terms of the contract for sale and the strata plan in the contract for sale. Any furniture or fixtures depicted are illustrative only and not part of the property sold. The contract for saleshow's inclusions sold with the property. Purchasers must rely on their enquiries and the information in the contract for sale.

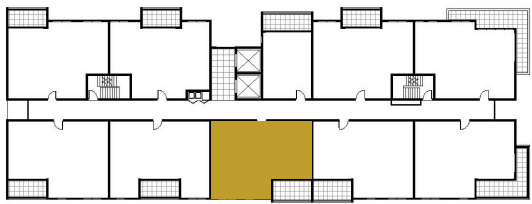
LERIDA & RUGBY STREET, SCHOFIELDS

PELICANA GREEN



2 BEDROOM

LEVEL 04
APARTMENT 408/1



2



2



1

Internal Area: 75.1 m²
External Area: 10.4 m²
Total Area: 85.5 m²



REVISED 21/04/21

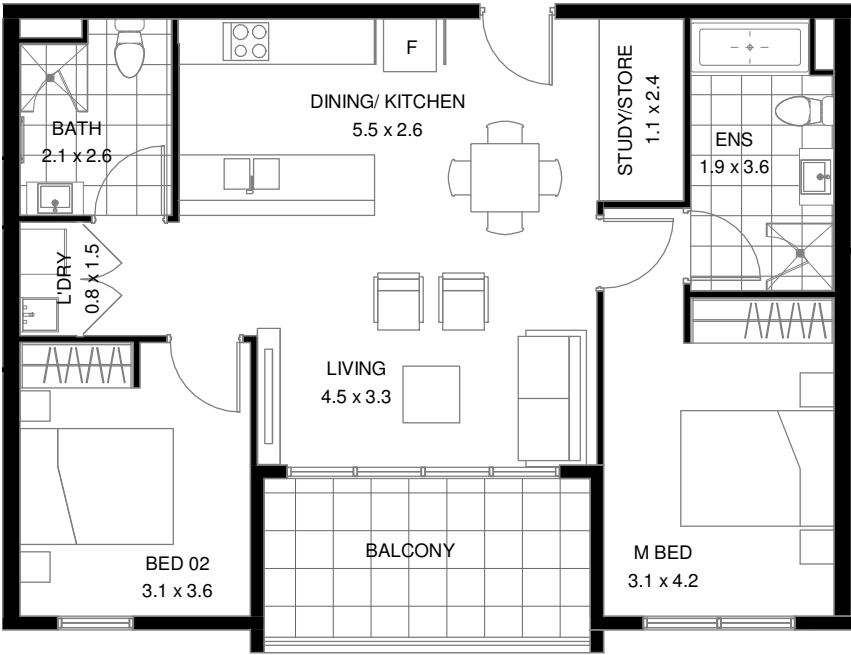


1300 228 452 sales@bathla.com.au

Disclaimer: The information and illustrations in this document are indicative only and are subject to the terms of the contract for sale and the strata plan in the contract for sale. Any furniture or fixtures depicted are illustrative only and not part of the property sold. The contract for saleshow's inclusions sold with the property. Purchasers must rely on their enquiries and the information in the contract for sale.

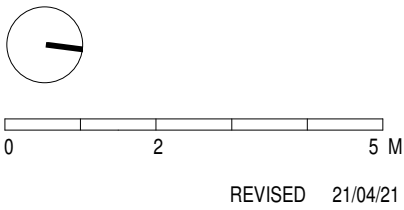
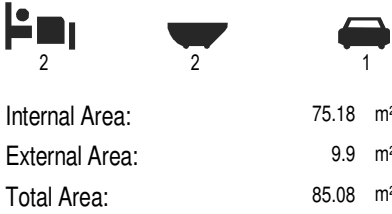
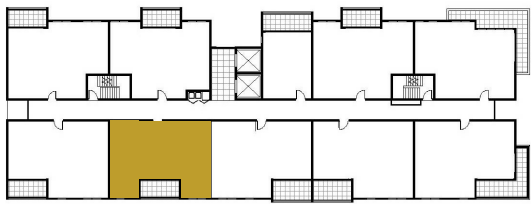
LERIDA & RUGBY STREET, SCHOFIELDS

PELICANA GREEN



2 BEDROOM

LEVEL 04
APARTMENT 409/1

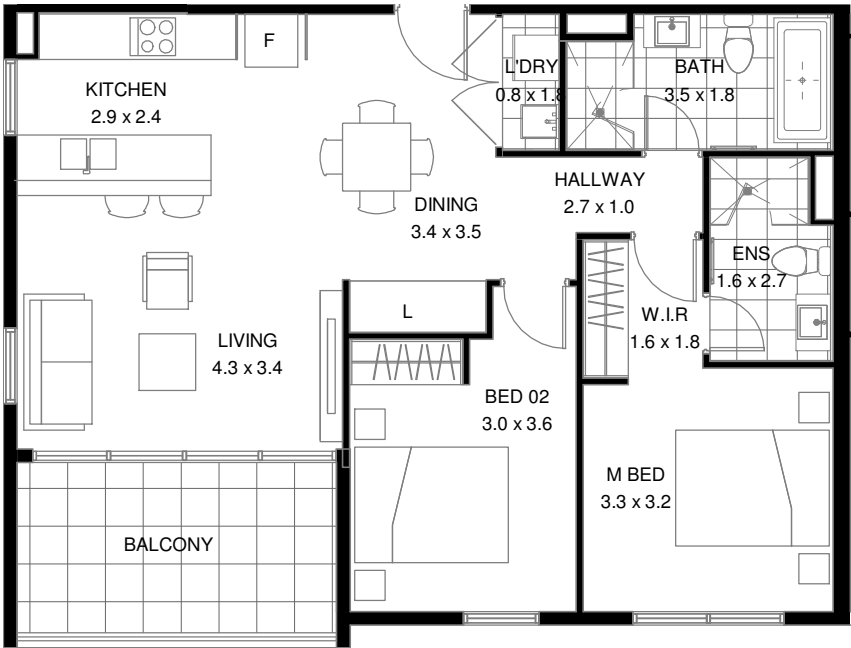


1300 228 452 sales@bathla.com.au

Disclaimer: The information and illustrations in this document are indicative only and are subject to the terms of the contract for sale and the strata plan in the contract for sale. Any furniture or fixtures depicted are illustrative only and not part of the property sold. The contract for saleshow's inclusions sold with the property. Purchasers must rely on their enquiries and the information in the contract for sale.

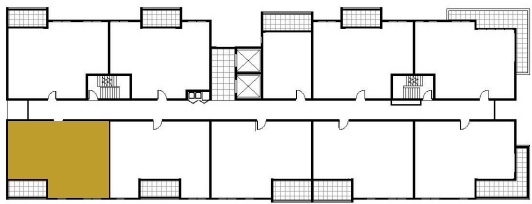
LERIDA & RUGBY STREET, SCHOFIELDS

PELICANA GREEN



2 BEDROOM

LEVEL 04
APARTMENT 410/1



Internal Area: 75.0 m²
External Area: 10.3 m²
Total Area: 85.3 m²



REVISED 21/04/21

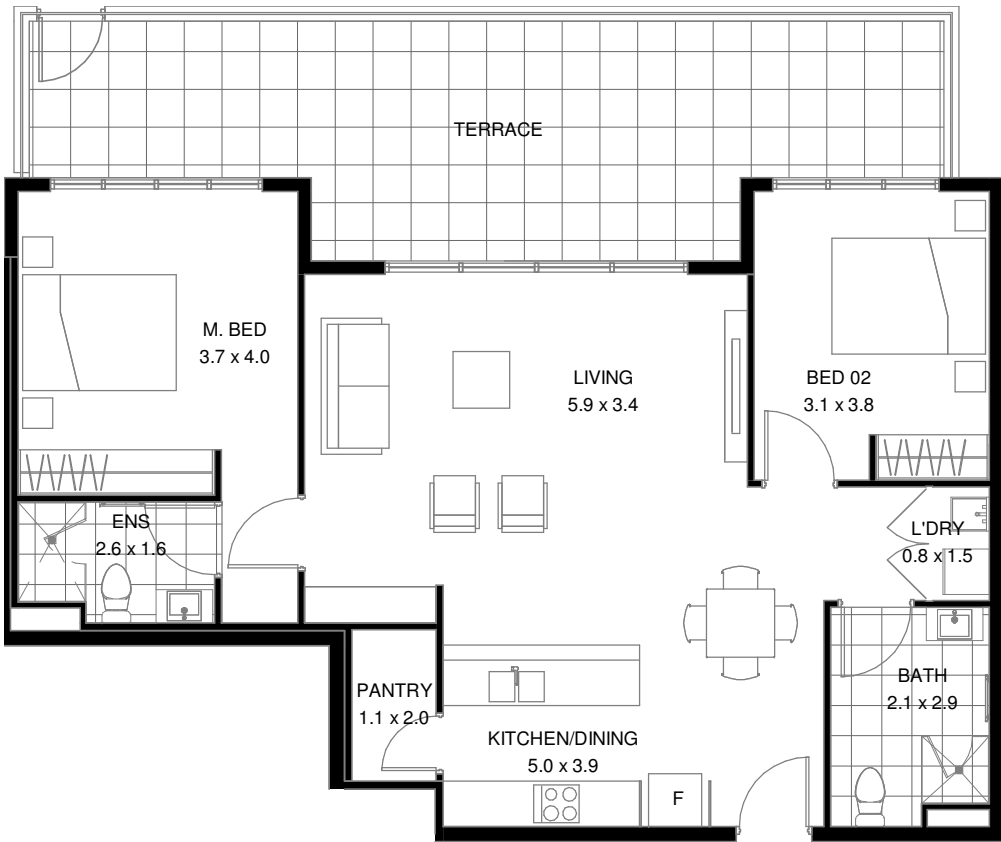


1300 228 452 sales@bathla.com.au

Disclaimer: The information and illustrations in this document are indicative only and are subject to the terms of the contract for sale and the strata plan in the contract for sale. Any furniture or fixtures depicted are illustrative only and not part of the property sold. The contract for saleshow's inclusions sold with the property. Purchasers must rely on their enquiries and the information in the contract for sale.

LERIDA & RUGBY STREET, SCHOFIELDS

PELICANA GREEN



2 BEDROOM

LEVEL GROUND
APARTMENT G01/1



Internal Area: 88.1 m²
External Area: 32.3 m²
Total Area: 120.4 m²



REVISED 21/04/21

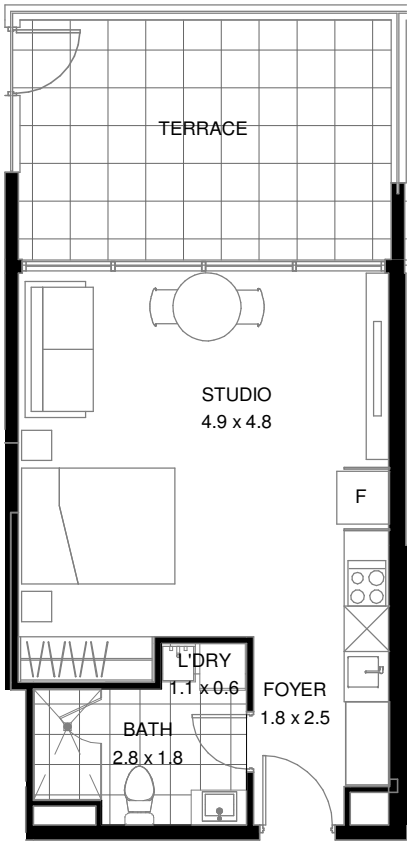


1300 228 452 sales@bathla.com.au

Disclaimer: The information and illustrations in this document are indicative only and are subject to the terms of the contract for sale and the strata plan in the contract for sale. Any furniture or fixtures depicted are illustrative only and not part of the property sold. The contract for saleshow's inclusions sold with the property. Purchasers must rely on their enquiries and the information in the contract for sale.

LERIDA & RUGBY STREET, SCHOFIELDS




PELICANA GREEN



STUDIO

LEVEL GROUND
APARTMENT G02/1



| | | |
|---|---|---|
|  |  |  |
| 0 | 1 | 1 |
| Internal Area: | | 35.0 m ² |
| External Area: | | 15.5 m ² |
| Total Area: | | 50.5 m ² |



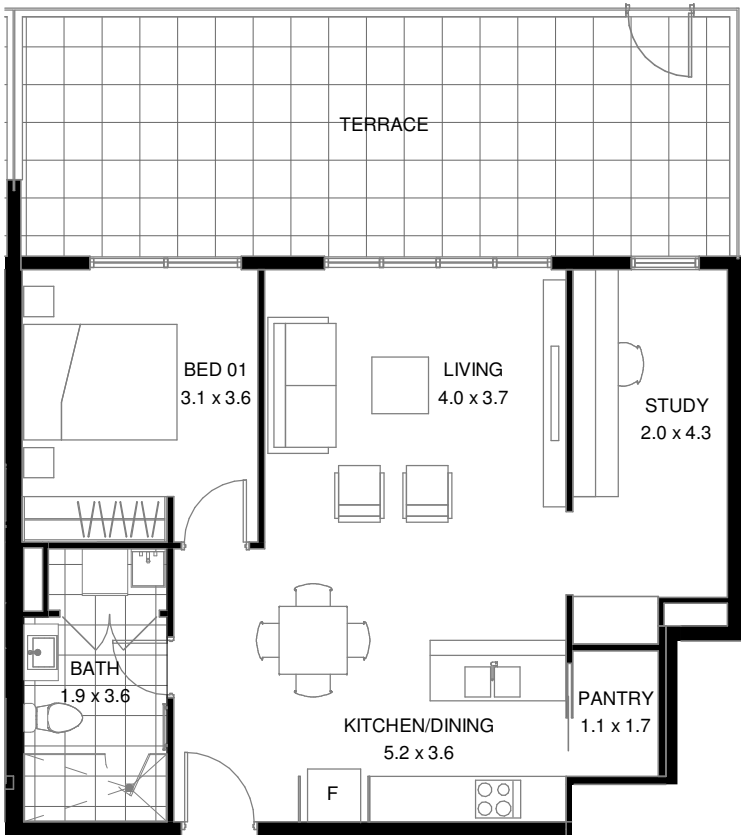


1300 228 452 sales@bathla.com.au

Disclaimer: The information and illustrations in this document are indicative only and are subject to the terms of the contract for sale and the strata plan in the contract for sale. Any furniture or fixtures depicted are illustrative only and not part of the property sold. The contract for saleshow's inclusions sold with the property. Purchasers must rely on their enquiries and the information in the contract for sale.

LERIDA & RUGBY STREET, SCHOFIELDS




PELICANA GREEN

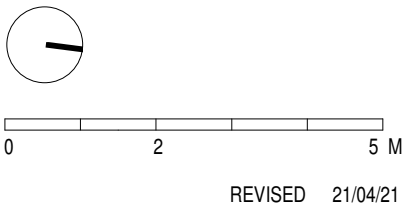


1 BED+ STUDY

LEVEL GROUND
APARTMENT G03/1



| | | |
|---|---|---|
|  |  |  |
| 1 | 1 | 1 |
| Internal Area: | 64.2 m ² | |
| External Area: | 29.6 m ² | |
| Total Area: | 93.8 m ² | |



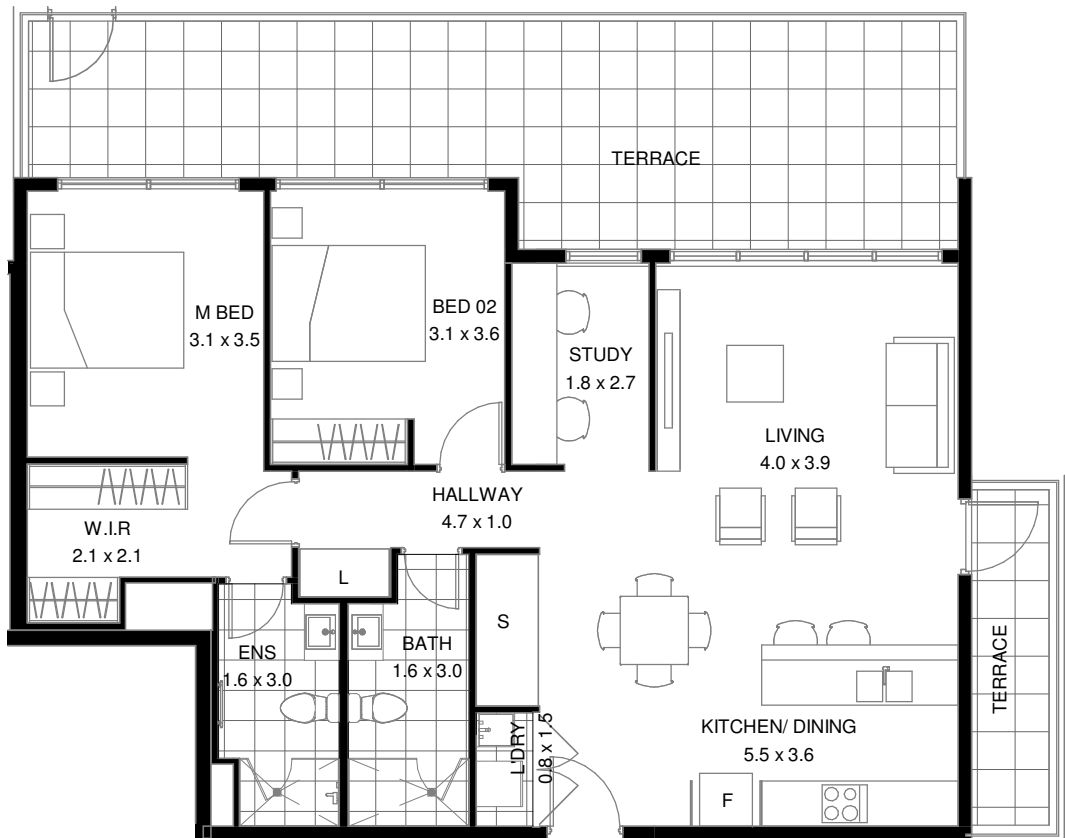


1300 228 452 sales@bathla.com.au

Disclaimer: The information and illustrations in this document are indicative only and are subject to the terms of the contract for sale and the strata plan in the contract for sale. Any furniture or fixtures depicted are illustrative only and not part of the property sold. The contract for saleshow's inclusions sold with the property. Purchasers must rely on their enquiries and the information in the contract for sale.

LERIDA & RUGBY STREET, SCHOFIELDS

PELICANA GREEN



**2 BEDROOM
+STUDY**

LEVEL GROUND

APARTMENT G04/1



Internal Area: 90.0 m²

External Area: 35.1 m²

Total Area: 125.1 m²



REVISED 21/04/21

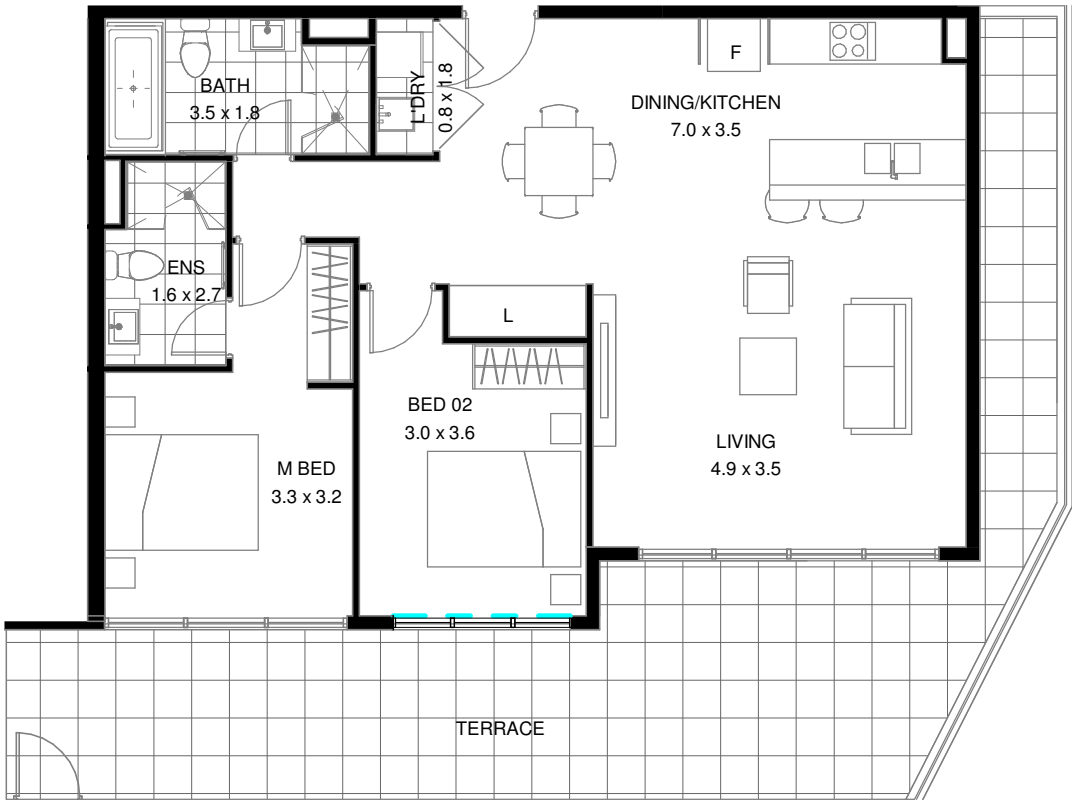


1300 228 452 sales@bathla.com.au

Disclaimer: The information and illustrations in this document are indicative only and are subject to the terms of the contract for sale and the strata plan in the contract for sale. Any furniture or fixtures depicted are illustrative only and not part of the property sold. The contract for saleshow's inclusions sold with the property. Purchasers must rely on their enquiries and the information in the contract for sale.

LERIDA & RUGBY STREET, SCHOFIELDS

PELICANA GREEN



2 BEDROOM

LEVEL GROUND
APARTMENT G05/1



Internal Area: 85.0 m²
External Area: 40.0 m²
Total Area: 125.0 m²



REVISED 21/04/21

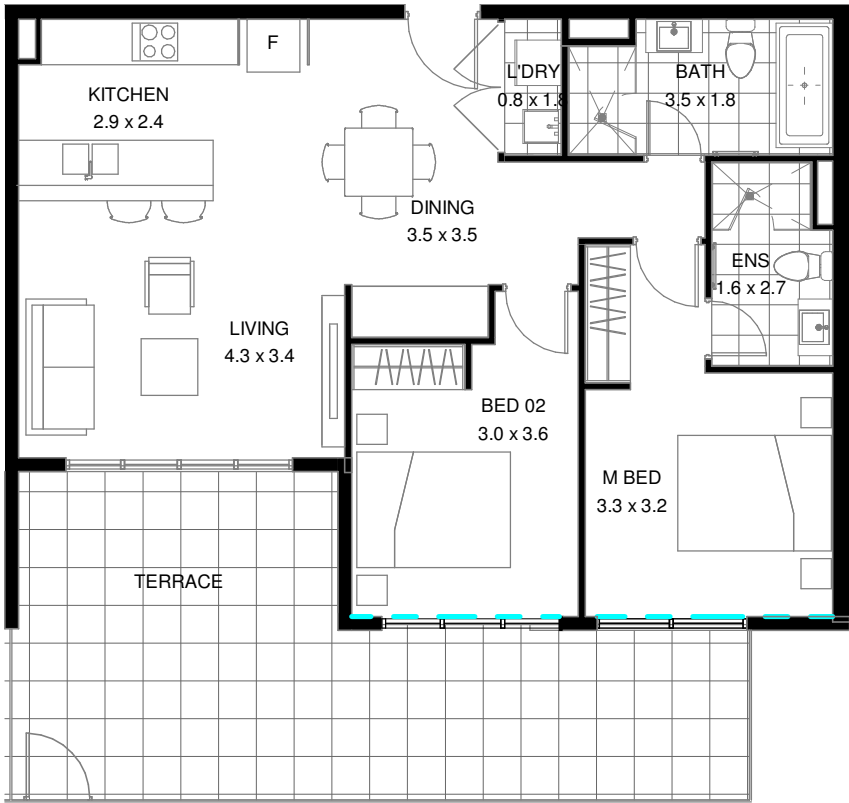


1300 228 452 sales@bathla.com.au

Disclaimer: The information and illustrations in this document are indicative only and are subject to the terms of the contract for sale and the strata plan in the contract for sale. Any furniture or fixtures depicted are illustrative only and not part of the property sold. The contract for saleshow's inclusions sold with the property. Purchasers must rely on their enquiries and the information in the contract for sale.

LERIDA & RUGBY STREET, SCHOFIELDS

PELICANA GREEN



2 BEDROOM

LEVEL GROUND
APARTMENT G06/1



Internal Area: 75.1 m²
External Area: 31.6 m²
Total Area: 106.7 m²



REVISED 21/04/21

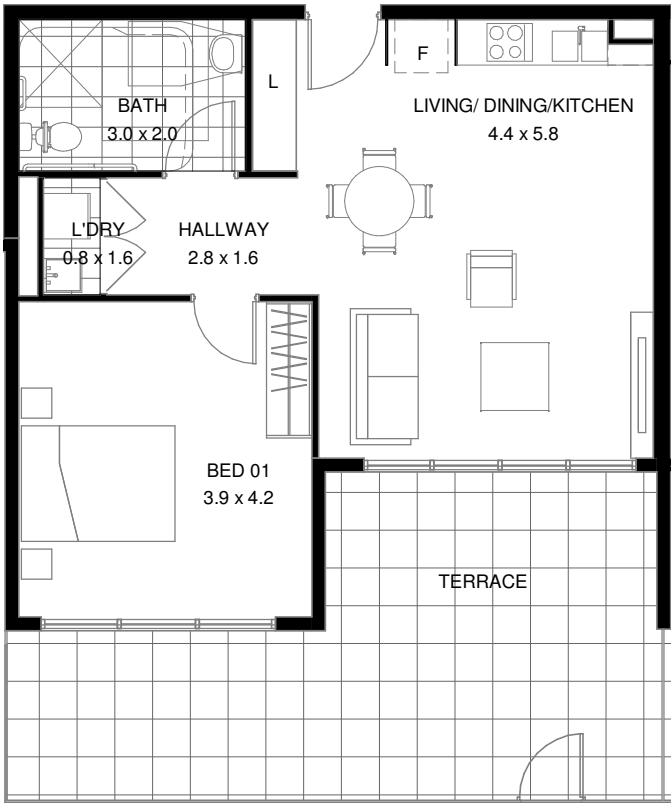


1300 228 452 sales@bathla.com.au

Disclaimer: The information and illustrations in this document are indicative only and are subject to the terms of the contract for sale and the strata plan in the contract for sale. Any furniture or fixtures depicted are illustrative only and not part of the property sold. The contract for saleshow's inclusions sold with the property. Purchasers must rely on their enquiries and the information in the contract for sale.

LERIDA & RUGBY STREET, SCHOFIELDS

PELICANA GREEN



**1 BEDROOM
(ADAPTABLE)**

LEVEL GROUND

APARTMENT G07/1



1



1



1

Internal Area: 56.1 m²
External Area: 28.7 m²
Total Area: 84.8 m²



REVISED 21/04/21

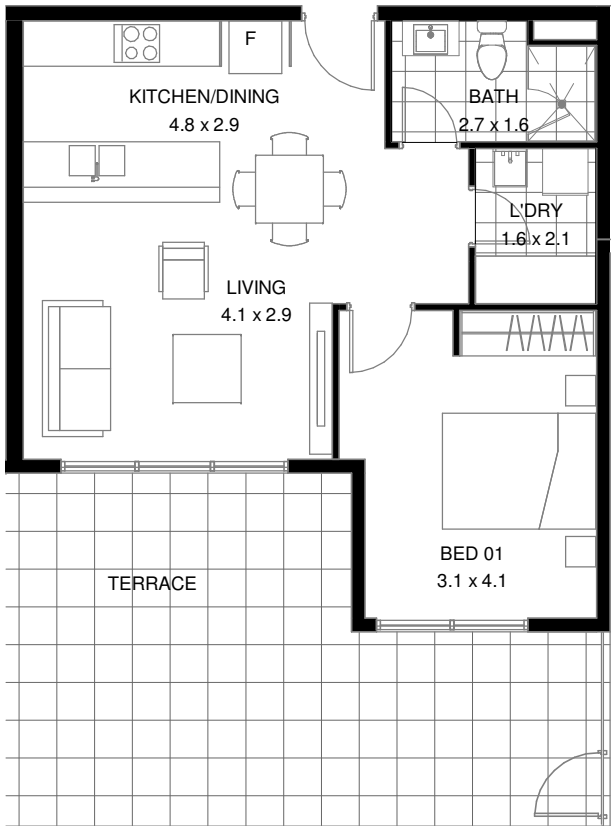


1300 228 452 sales@bathla.com.au

Disclaimer: The information and illustrations in this document are indicative only and are subject to the terms of the contract for sale and the strata plan in the contract for sale. Any furniture or fixtures depicted are illustrative only and not part of the property sold. The contract for saleshow's inclusions sold with the property. Purchasers must rely on their enquiries and the information in the contract for sale.

LERIDA & RUGBY STREET, SCHOFIELDS

PELICANA GREEN



1 BEDROOM

LEVEL GROUND
APARTMENT G08/1



1



1



1

Internal Area: 50.1 m²
External Area: 30.0 m²
Total Area: 80.1 m²



REVISED 21/04/21

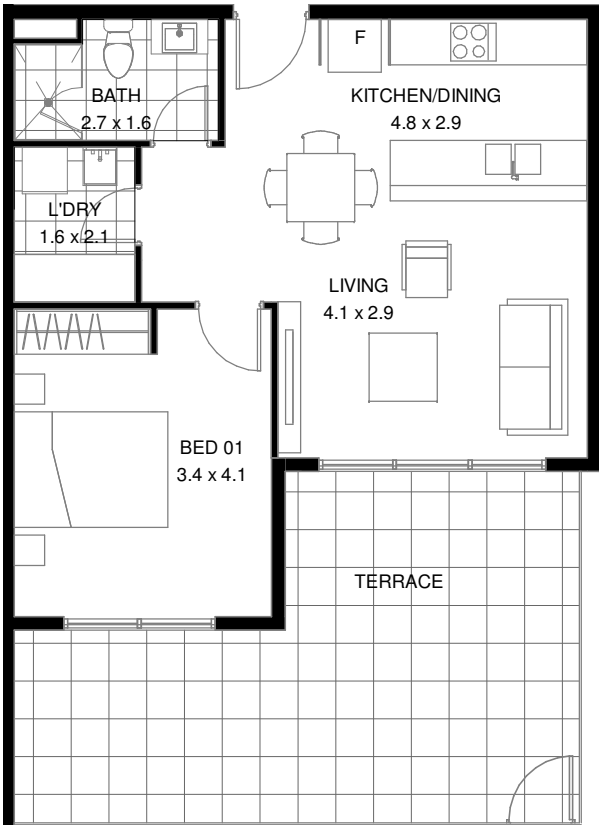


1300 228 452 sales@bathla.com.au

Disclaimer: The information and illustrations in this document are indicative only and are subject to the terms of the contract for sale and the strata plan in the contract for sale. Any furniture or fixtures depicted are illustrative only and not part of the property sold. The contract for saleshow's inclusions sold with the property. Purchasers must rely on their enquiries and the information in the contract for sale.

LERIDA & RUGBY STREET, SCHOFIELDS




PELICANA GREEN

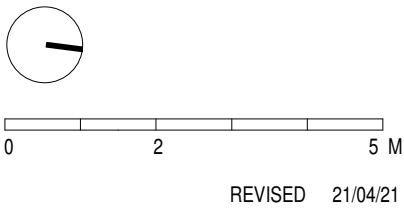


1 BEDROOM

LEVEL GROUND
APARTMENT G09/1



| | | |
|---|---|---|
|  |  |  |
| 1 | 1 | 1 |
| Internal Area: | 50.8 m ² | |
| External Area: | 27.2 m ² | |
| Total Area: | 78.0 m ² | |





1300 228 452 sales@bathla.com.au

Disclaimer: The information and illustrations in this document are indicative only and are subject to the terms of the contract for sale and the strata plan in the contract for sale. Any furniture or fixtures depicted are illustrative only and not part of the property sold. The contract for saleshow's inclusions sold with the property. Purchasers must rely on their enquiries and the information in the contract for sale.