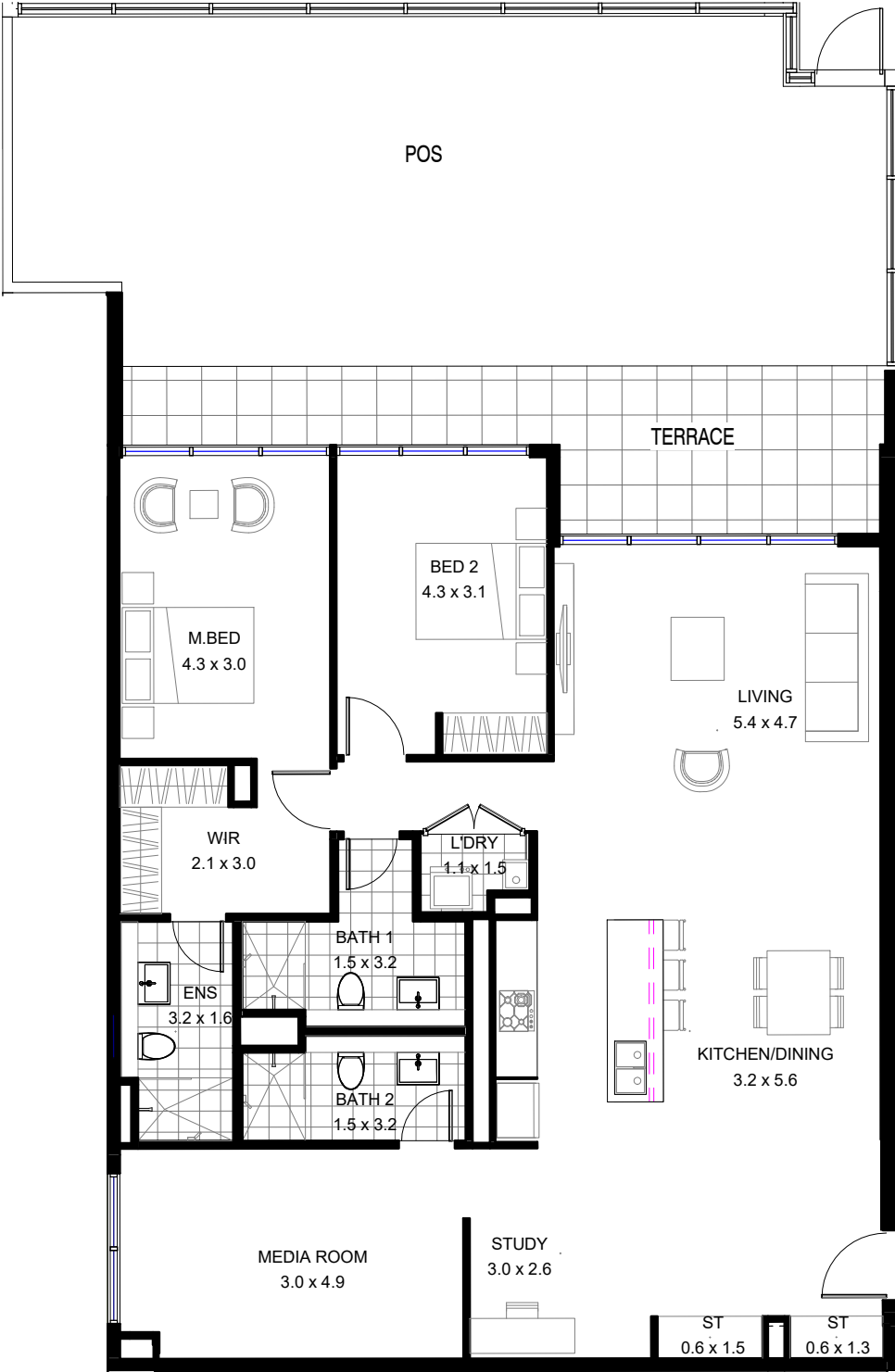


ADVANCE ST APARTMENT

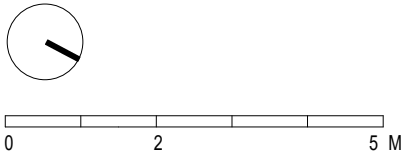


2 BEDROOM

LEVEL	GROUND
APARTMENT	G01



		
2	3	1
Internal Area:	130.8 m ²	
External Area:	76.7 m ²	
Total Area:	207.5 m ²	



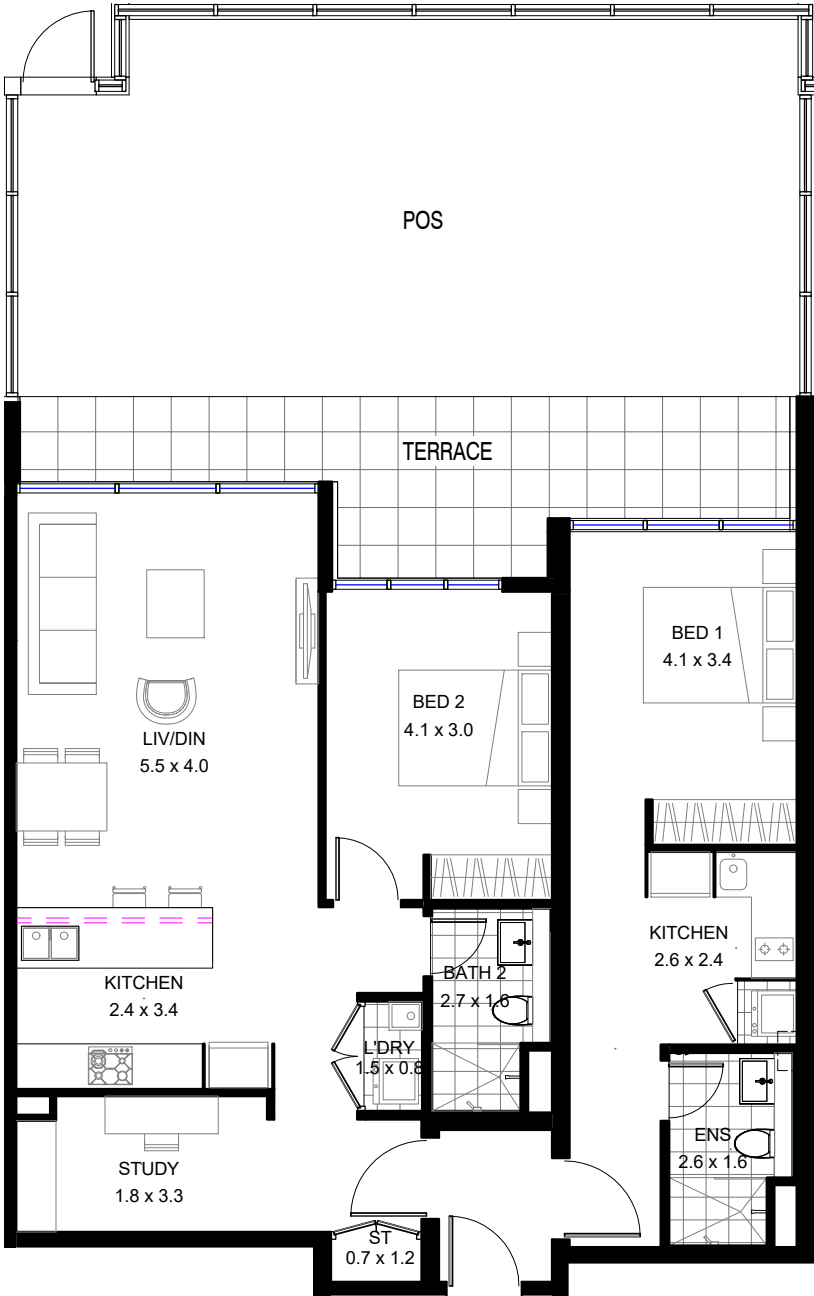
REVISED 08/09/2021

Bathla

1300 228 452 sales@bathla.com.au

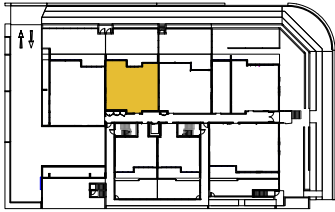
Disclaimer: The information and illustrations in this document are indicative only and are subject to the terms of the contract for sale and the strata plan in the contract for sale. Any furniture or fixtures depicted are illustrative only and not part of the property sold. The contract for saleshowls inclusions sold with the property. Purchasers must rely on their enquiries and the information in the contact for sale.

ADVANCE ST APARTMENT



**2 BEDROOM
(DUAL KEY)**

LEVEL GROUND
APARTMENT G02



Internal Area: 96.0 m²
External Area: 67.4 m²
Total Area: 163.4 m²



0 2 5 M

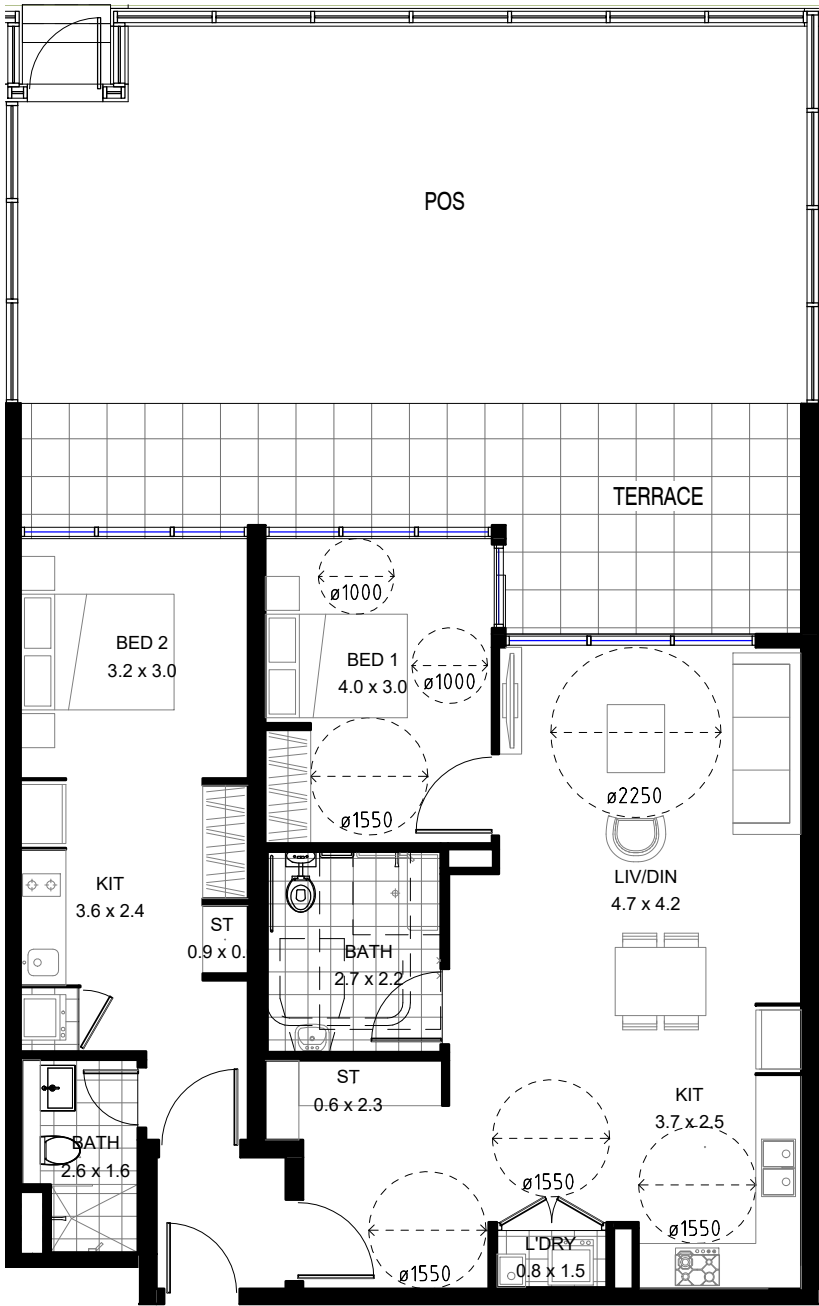
REVISED 08/09/2021

Bathla

1300 228 452 sales@bathla.com.au

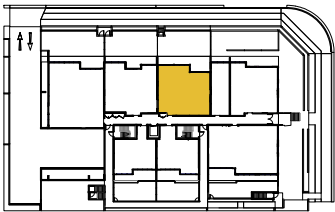
Disclaimer: The information and illustrations in this document are indicative only and are subject to the terms of the contract for sale and the strata plan in the contract for sale. Any furniture or fixtures depicted are illustrative only and not part of the property sold. The contract for saleshowls inclusions sold with the property. Purchasers must rely on their enquiries and the information in the contact for sale.

ADVANCE ST APARTMENT



2 BEDROOM (ADP- DUAL KEY)

LEVEL GROUND
APARTMENT G03



Internal Area: 94.5 m²
External Area: 72.9 m²
Total Area: 167.4 m²



0 2 5 M

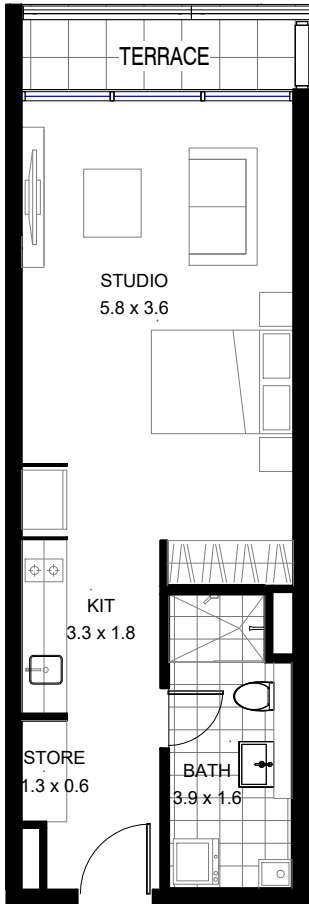
REVISED 08/09/2021

Bathla

1300 228 452 sales@bathla.com.au

Disclaimer: The information and illustrations in this document are indicative only and are subject to the terms of the contract for sale and the strata plan in the contract for sale. Any furniture or fixtures depicted are illustrative only and not part of the property sold. The contract for saleshowls inclusions sold with the property. Purchasers must rely on their enquiries and the information in the contact for sale.

ADVANCE ST APARTMENT



STUDIO

LEVELGROUND

APARTMENTG04

Internal Area:

External Area:

Total Area:

1

37.1 m²

4.1 m²

41.2 m²

025

M

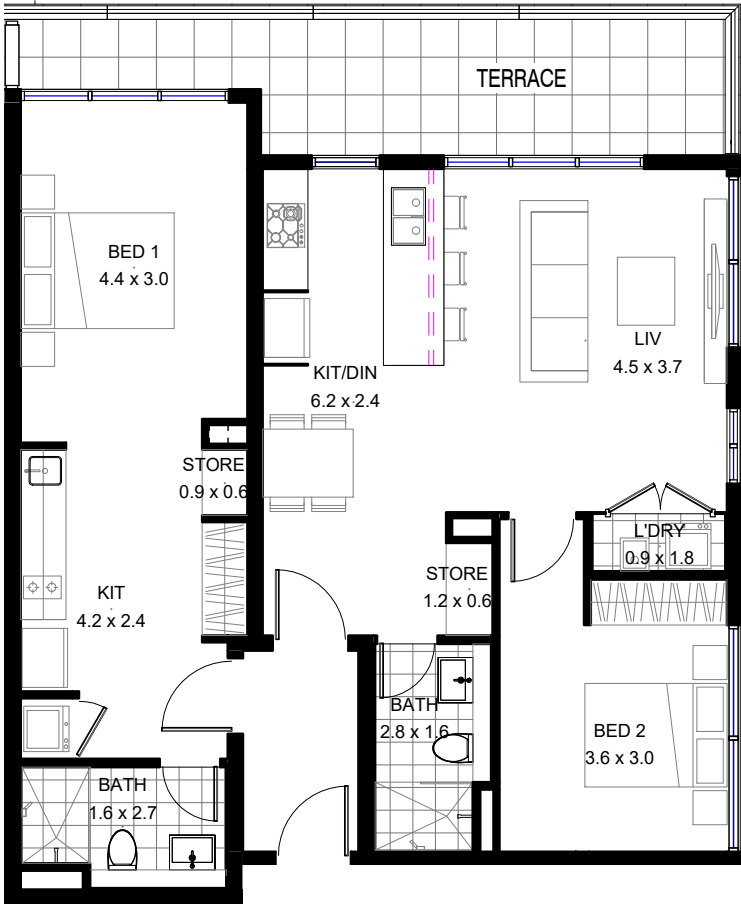
REVISED 08/09/2021

Bathla

1300 228 452 sales@bathla.com.au

Disclaimer: The information and illustrations in this document are indicative only and are subject to the terms of the contract for sale and the strata plan in the contract for sale. Any furniture or fixtures depicted are illustrative only and not part of the property sold. The contract for saleshowls inclusions sold with the property. Purchasers must rely on their enquiries and the information in the contact for sale.

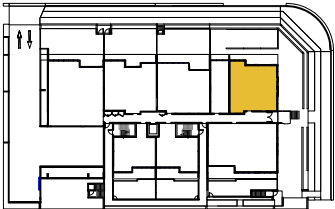
ADVANCE ST APARTMENT



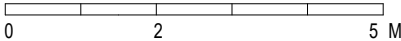
**2 BEDROOM
(DUAL KEY)**

LEVEL GROUND

APARTMENT G05



Internal Area: 86.8 m²
External Area: 16.4 m²
Total Area: 103.2 m²



REVISED 08/09/2021

Bathla

1300 228 452 sales@bathla.com.au

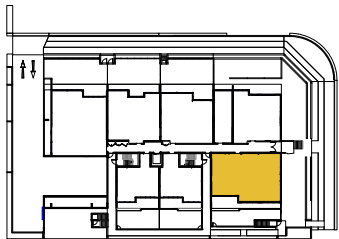
Disclaimer: The information and illustrations in this document are indicative only and are subject to the terms of the contract for sale and the strata plan in the contract for sale. Any furniture or fixtures depicted are illustrative only and not part of the property sold. The contract for saleshowls inclusions sold with the property. Purchasers must rely on their enquiries and the information in the contact for sale.

ADVANCE ST APARTMENT

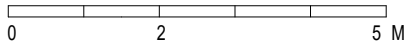


**3 BEDROOM
(DUAL KEY)**

LEVEL	GROUND
APARTMENT	G06



Internal Area:	123.4 m ²
External Area:	63.5 m ²
Total Area:	186.9 m ²



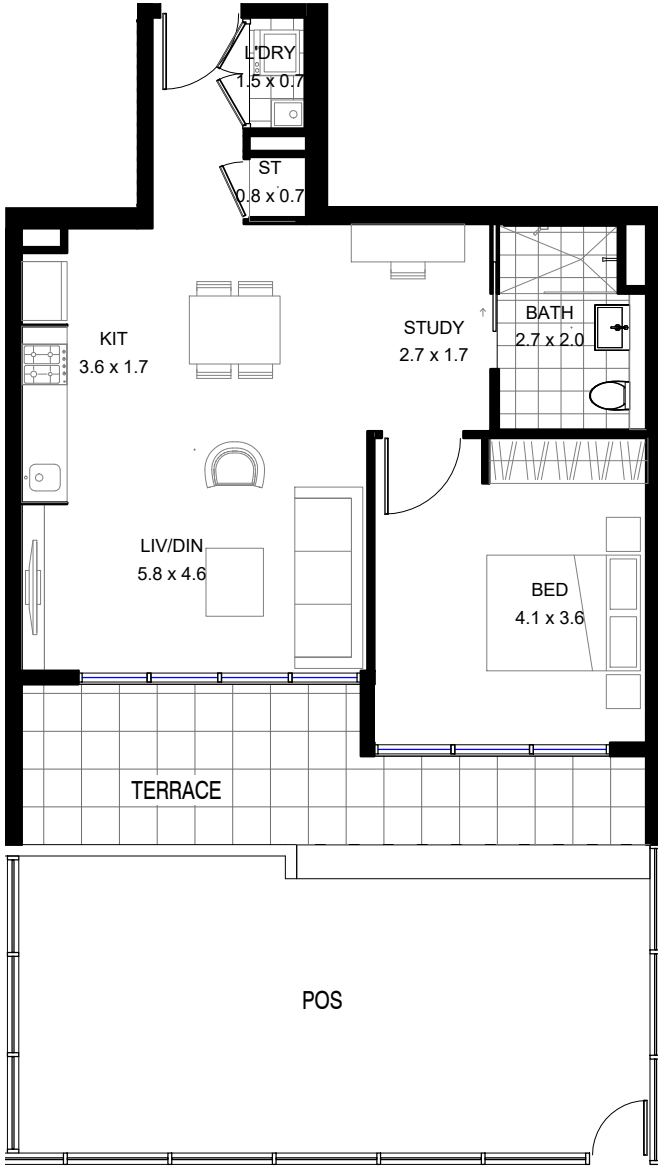
REVISED 08/09/2021

Bathla

1300 228 452 sales@bathla.com.au

Disclaimer: The information and illustrations in this document are indicative only and are subject to the terms of the contract for sale and the strata plan in the contract for sale. Any furniture or fixtures depicted are illustrative only and not part of the property sold. The contract for saleshowls inclusions sold with the property. Purchasers must rely on their enquiries and the information in the contact for sale.

ADVANCE ST APARTMENT



1 BEDROOM
(LIVABLE)

LEVELGROUND

APARTMENTG07

1

1

1

Internal Area:

56.9 m²

External Area:

48.0 m²

Total Area:

104.9 m²

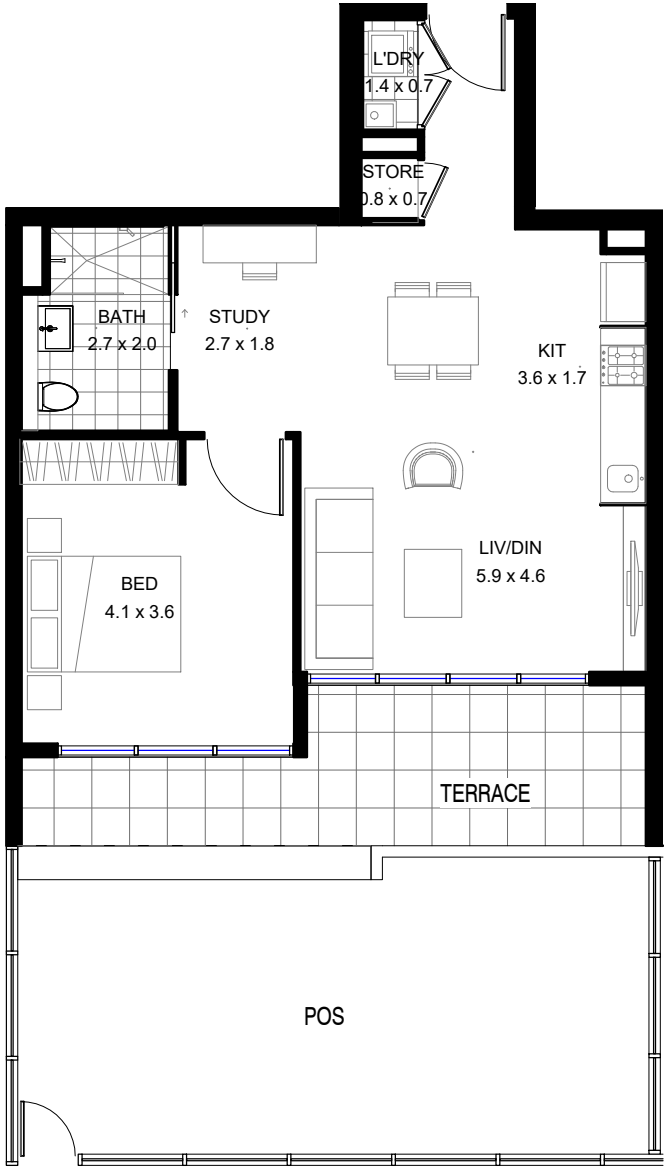
Bathla

1300 228 452 sales@bathla.com.au

REVISED 08/09/2021

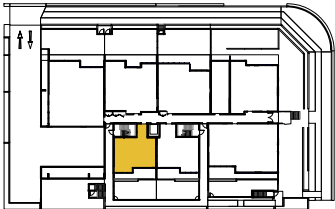
Disclaimer: The information and illustrations in this document are indicative only and are subject to the terms of the contract for sale and the strata plan in the contract for sale. Any furniture or fixtures depicted are illustrative only and not part of the property sold. The contract for saleshowls inclusions sold with the property. Purchasers must rely on their enquiries and the information in the contact for sale.

ADVANCE ST APARTMENT



1 BEDROOM (LIVABLE)

LEVEL GROUND
APARTMENT G08



1



1



1

Internal Area: 56.9 m²
External Area: 48 m²
Total Area: 104.9 m²



0 2 5 M

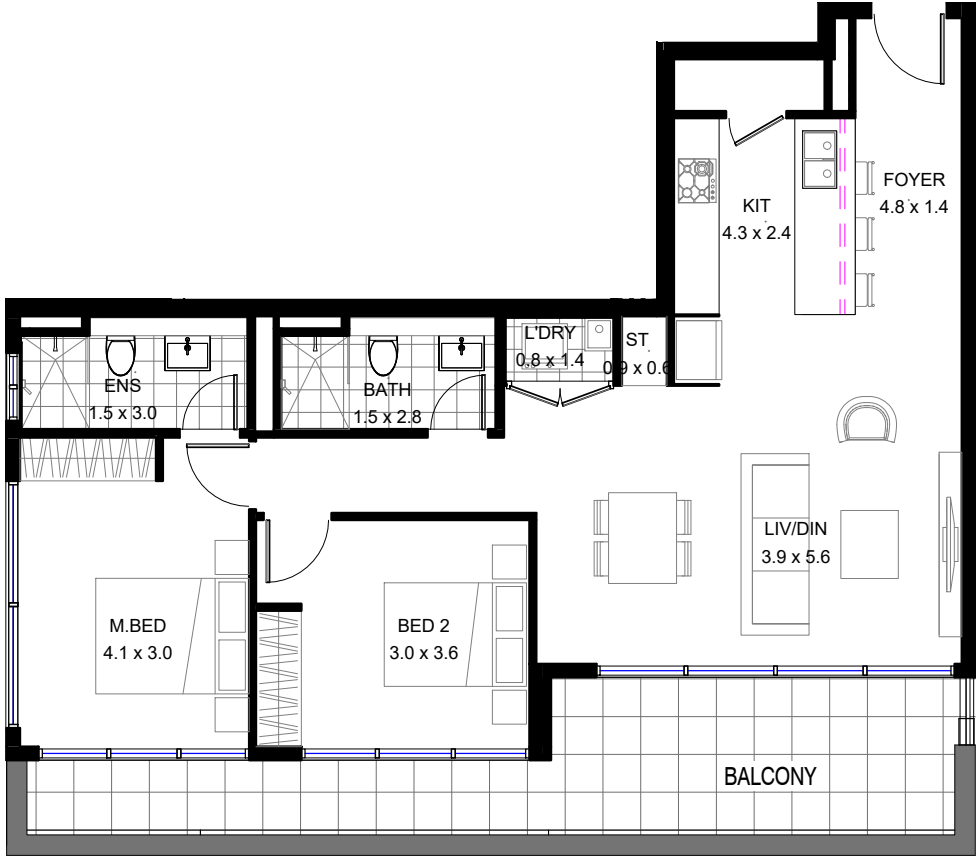
REVISED 08/09/2021

Bathla

1300 228 452 sales@bathla.com.au

Disclaimer: The information and illustrations in this document are indicative only and are subject to the terms of the contract for sale and the strata plan in the contract for sale. Any furniture or fixtures depicted are illustrative only and not part of the property sold. The contract for saleshowls inclusions sold with the property. Purchasers must rely on their enquiries and the information in the contact for sale.

ADVANCE ST APARTMENT



2 BEDROOM

LEVEL	1
APARTMENT	101



2



2



1

Internal Area:	76.9 m ²
External Area:	20.2 m ²
Total Area:	97.1 m ²



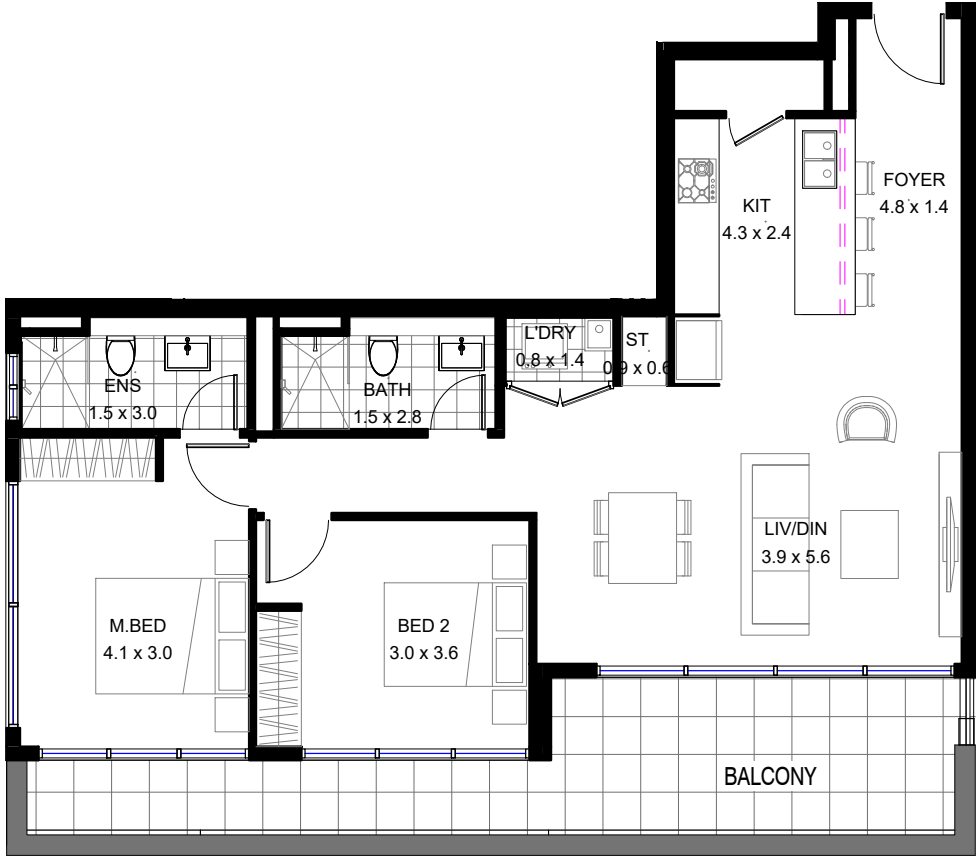
REVISED 08/09/2021

Bathla

1300 228 452 sales@bathla.com.au

Disclaimer: The information and illustrations in this document are indicative only and are subject to the terms of the contract for sale and the strata plan in the contract for sale. Any furniture or fixtures depicted are illustrative only and not part of the property sold. The contract for saleshowls inclusions sold with the property. Purchasers must rely on their enquiries and the information in the contact for sale.

ADVANCE ST APARTMENT



2 BEDROOM

LEVEL2

APARTMENT201

2

2

1

Internal Area:76.9 m²

External Area:20.2 m²

Total Area:97.1 m²

025

0

2

5 M

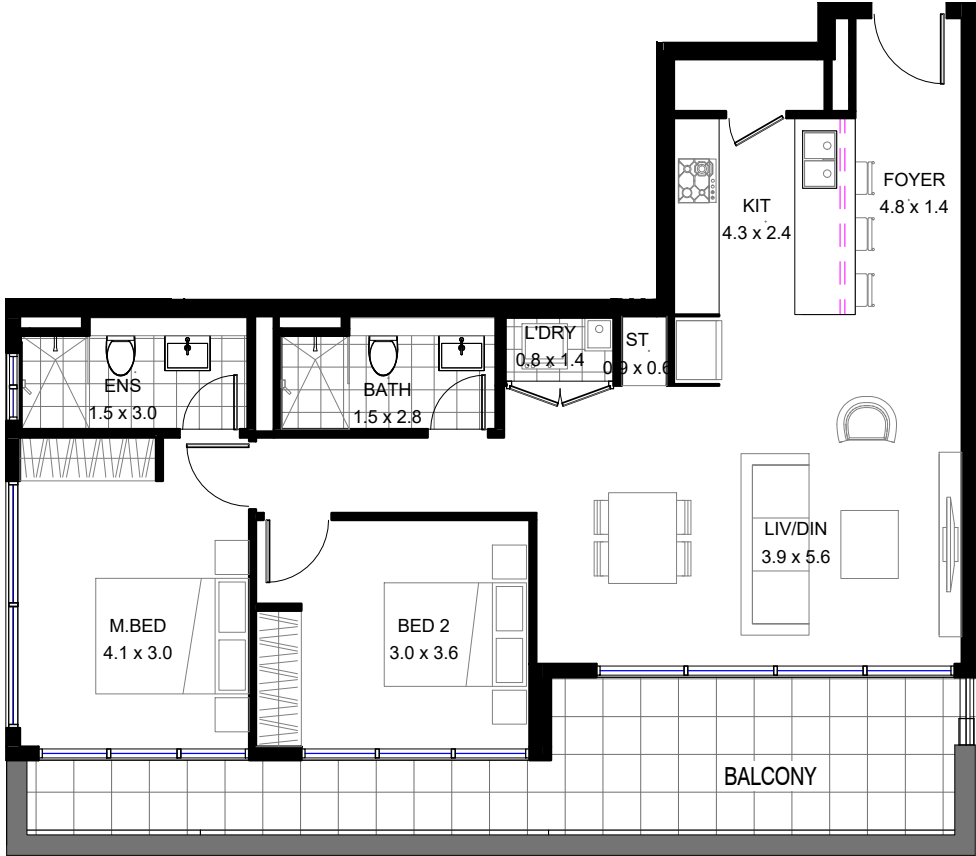
REVISED 08/09/2021

Bathla

1300 228 452 sales@bathla.com.au

Disclaimer: The information and illustrations in this document are indicative only and are subject to the terms of the contract for sale and the strata plan in the contract for sale. Any furniture or fixtures depicted are illustrative only and not part of the property sold. The contract for saleshowls inclusions sold with the property. Purchasers must rely on their enquiries and the information in the contact for sale.

ADVANCE ST APARTMENT



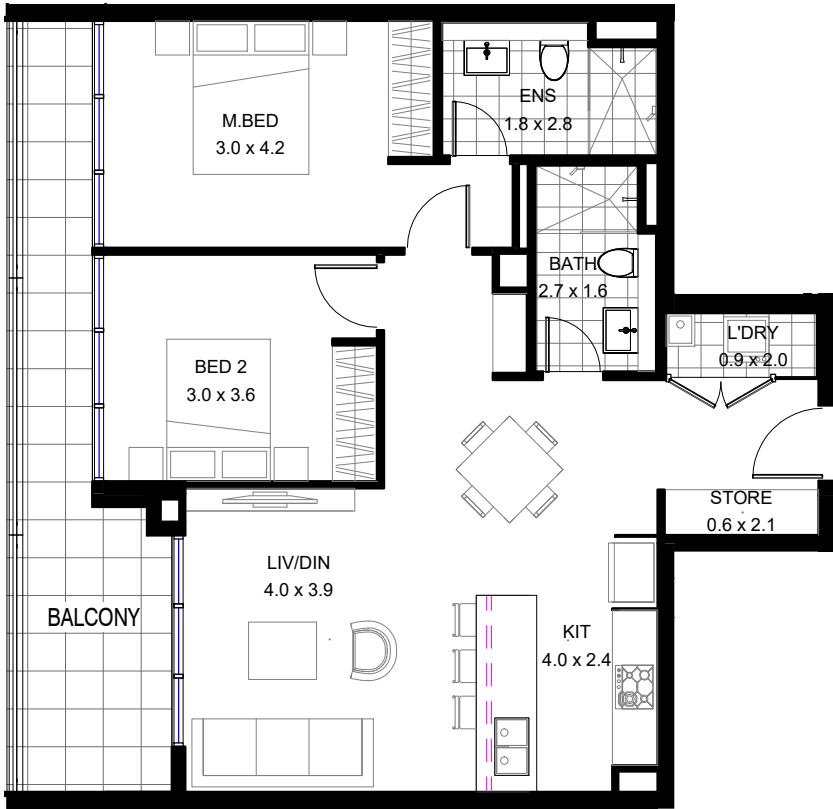
2 BEDROOM

LEVEL3

APARTMENT301

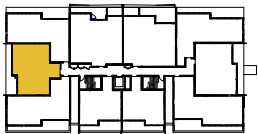
<

ADVANCE ST APARTMENT



2 BEDROOM

LEVEL	1
APARTMENT	102



2



2



1

Internal Area:	75.2 m ²
External Area:	15.3 m ²
Total Area:	90.5 m ²



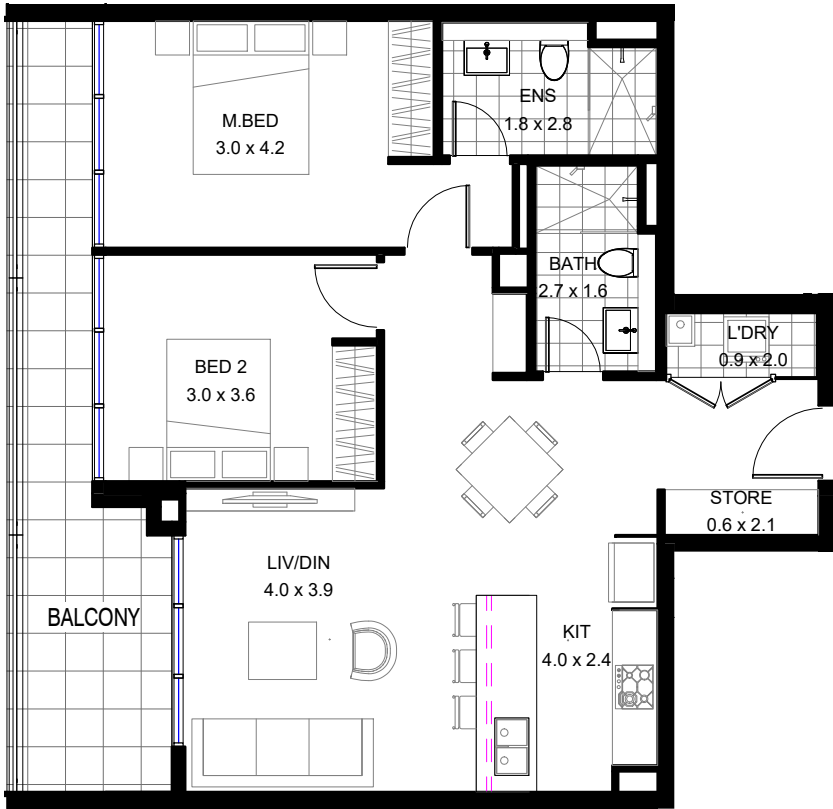
REVISED 08/09/2021

Bathla

1300 228 452 sales@bathla.com.au

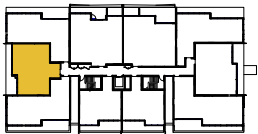
Disclaimer: The information and illustrations in this document are indicative only and are subject to the terms of the contract for sale and the strata plan in the contract for sale. Any furniture or fixtures depicted are illustrative only and not part of the property sold. The contract for saleshowls inclusions sold with the property. Purchasers must rely on their enquiries and the information in the contact for sale.

ADVANCE ST APARTMENT



2 BEDROOM

LEVEL	2
APARTMENT	202



2



2



1

Internal Area:	75.2 m ²
External Area:	15.3 m ²
Total Area:	90.5 m ²



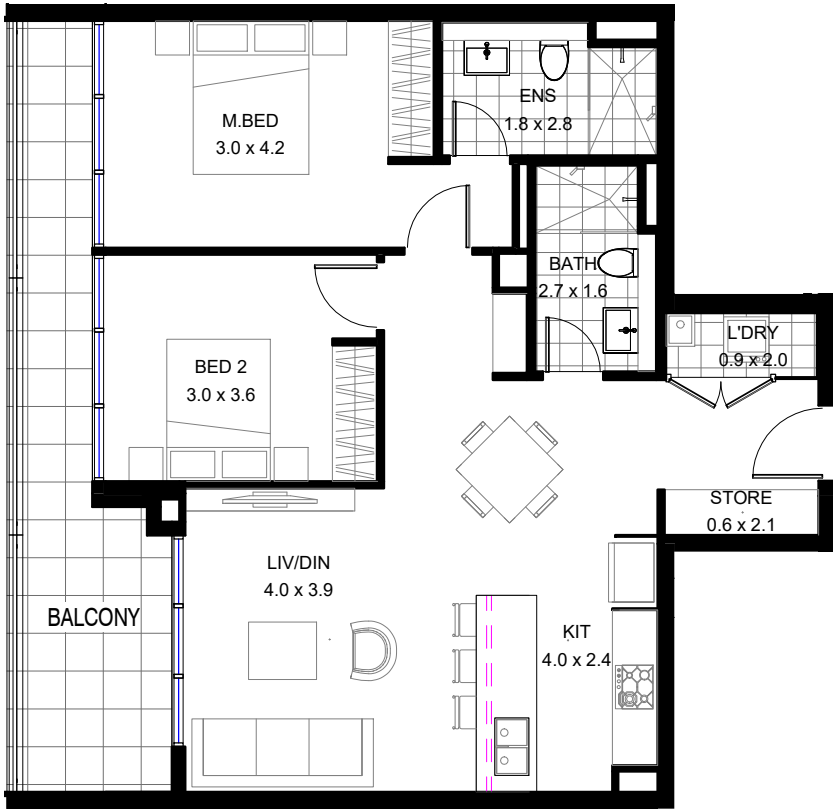
REVISED 08/09/2021

Bathla

1300 228 452 sales@bathla.com.au

Disclaimer: The information and illustrations in this document are indicative only and are subject to the terms of the contract for sale and the strata plan in the contract for sale. Any furniture or fixtures depicted are illustrative only and not part of the property sold. The contract for saleshowls inclusions sold with the property. Purchasers must rely on their enquiries and the information in the contact for sale.

ADVANCE ST APARTMENT



2 BEDROOM

LEVEL3

APARTMENT302

2

2

1

Internal Area:75.2 m²

External Area:15.3 m²

Total Area:90.5 m²

0

2

5 M

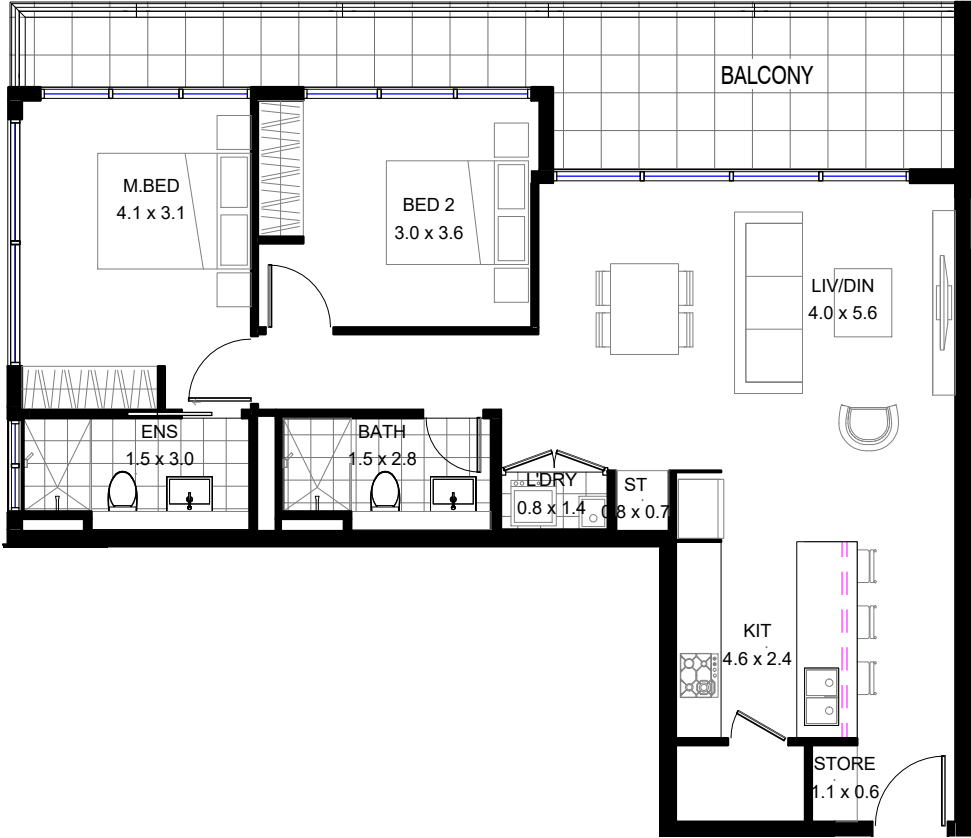
REVISED 08/09/2021

Bathla

1300 228 452 sales@bathla.com.au

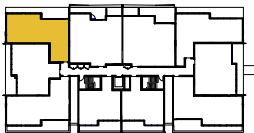
Disclaimer: The information and illustrations in this document are indicative only and are subject to the terms of the contract for sale and the strata plan in the contract for sale. Any furniture or fixtures depicted are illustrative only and not part of the property sold. The contract for saleshowls inclusions sold with the property. Purchasers must rely on their enquiries and the information in the contact for sale.

ADVANCE ST APARTMENT



2 BEDROOM

LEVEL	1
APARTMENT	103



2

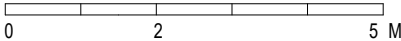


2



1

Internal Area:	77.0 m ²
External Area:	19.9 m ²
Total Area:	96.9 m ²



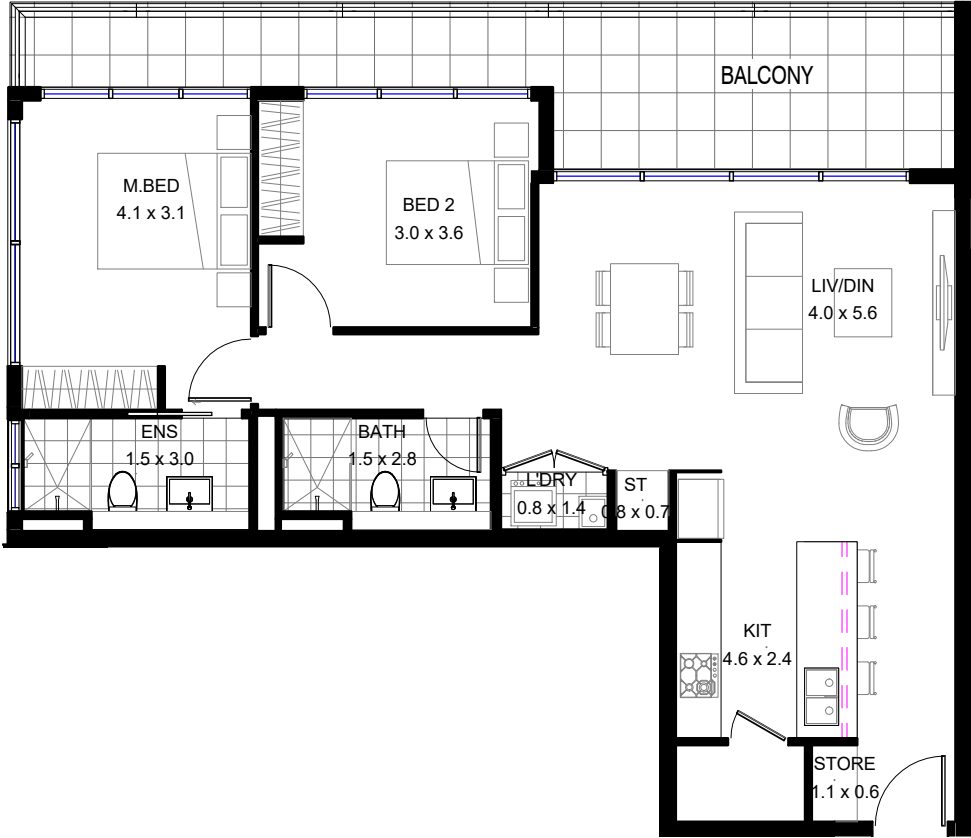
REVISED 08/09/2021

Bathla

1300 228 452 sales@bathla.com.au

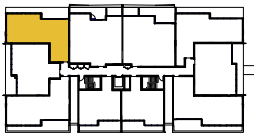
Disclaimer: The information and illustrations in this document are indicative only and are subject to the terms of the contract for sale and the strata plan in the contract for sale. Any furniture or fixtures depicted are illustrative only and not part of the property sold. The contract for saleshow's inclusions sold with the property. Purchasers must rely on their enquiries and the information in the contract for sale.

ADVANCE ST APARTMENT



2 BEDROOM

LEVEL	2
APARTMENT	203



2

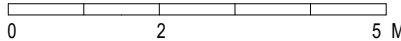


2



1

Internal Area:	77.0 m ²
External Area:	19.9 m ²
Total Area:	96.9 m ²



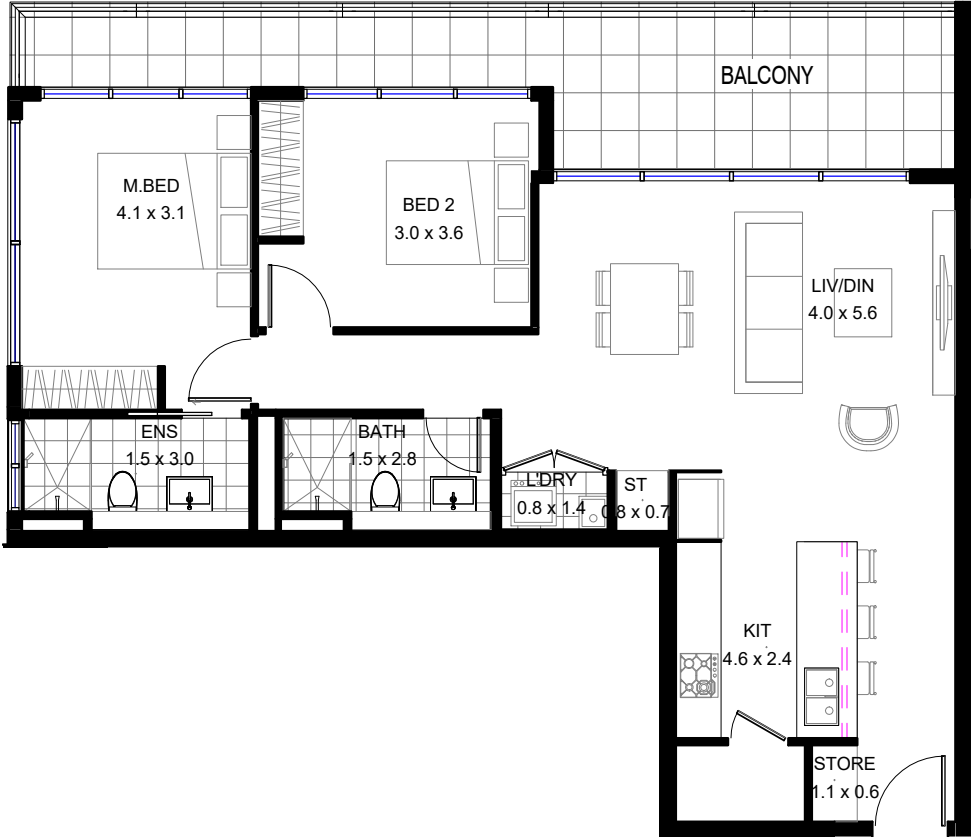
REVISED 08/09/2021

Bathla

1300 228 452 sales@bathla.com.au

Disclaimer: The information and illustrations in this document are indicative only and are subject to the terms of the contract for sale and the strata plan in the contract for sale. Any furniture or fixtures depicted are illustrative only and not part of the property sold. The contract for saleshowls inclusions sold with the property. Purchasers must rely on their enquiries and the information in the contact for sale.

ADVANCE ST APARTMENT



2 BEDROOM

LEVEL	3
APARTMENT	303



2

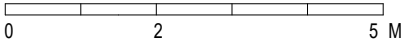


2



1

Internal Area:	77.0 m ²
External Area:	19.9 m ²
Total Area:	96.9 m ²



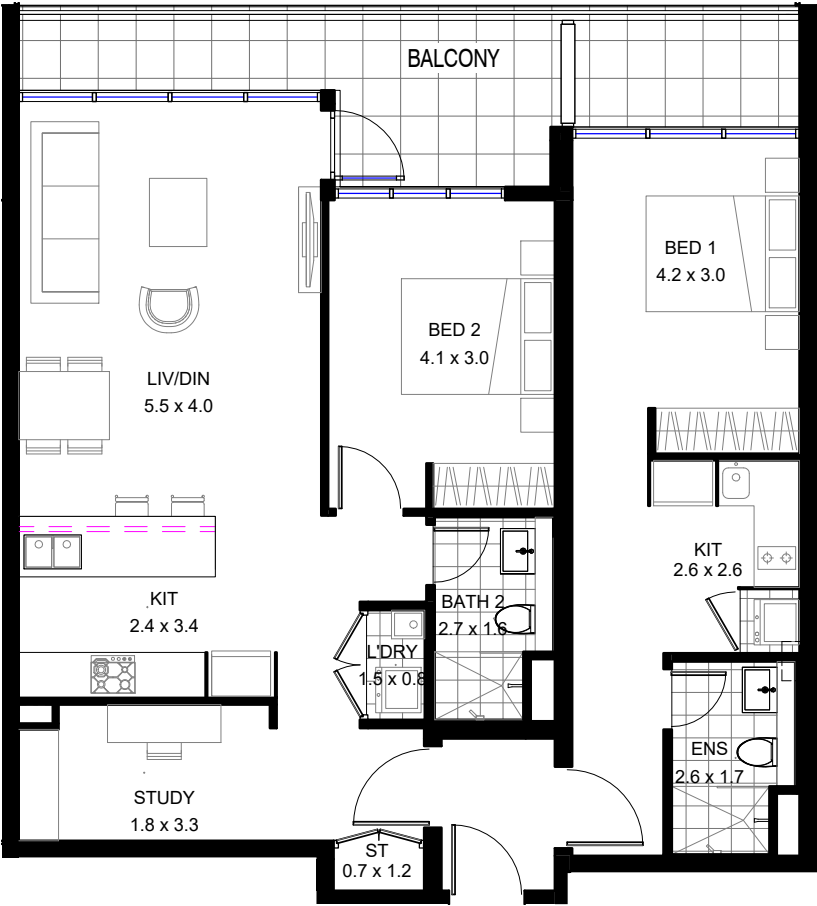
REVISED 08/09/2021

Bathla

1300 228 452 sales@bathla.com.au

Disclaimer: The information and illustrations in this document are indicative only and are subject to the terms of the contract for sale and the strata plan in the contract for sale. Any furniture or fixtures depicted are illustrative only and not part of the property sold. The contract for saleshow's inclusions sold with the property. Purchasers must rely on their enquiries and the information in the contract for sale.

ADVANCE ST APARTMENT



2 BEDROOM
(DUAL KEY)

LEVEL1

APARTMENT104

2

2

2

Internal Area:96.1 m²

External Area:16.9 m²

Total Area:113.0 m²

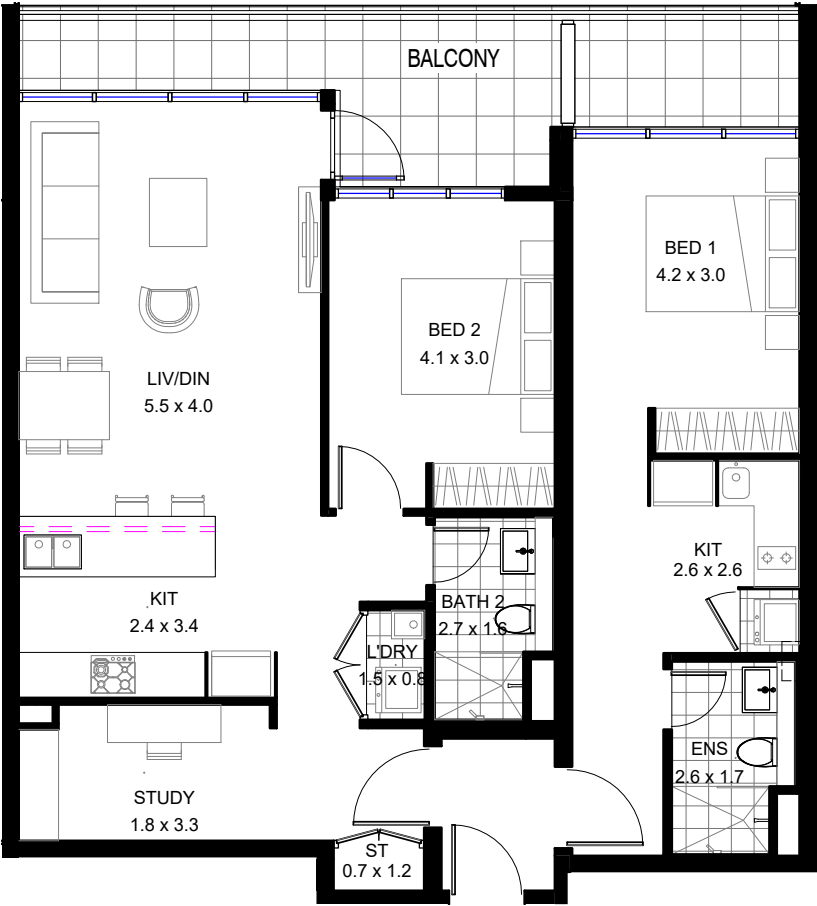
Bathla

1300 228 452 sales@bathla.com.au

REVISED 08/09/2021

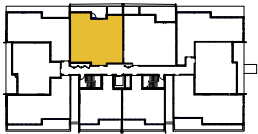
Disclaimer: The information and illustrations in this document are indicative only and are subject to the terms of the contract for sale and the strata plan in the contract for sale. Any furniture or fixtures depicted are illustrative only and not part of the property sold. The contract for saleshowls inclusions sold with the property. Purchasers must rely on their enquiries and the information in the contact for sale.

ADVANCE ST APARTMENT



**2 BEDROOM
(DUAL KEY)**

LEVEL	2
APARTMENT	204



2

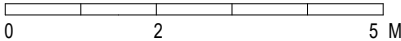


2



2

Internal Area:	96.1 m ²
External Area:	16.9 m ²
Total Area:	113.0 m ²



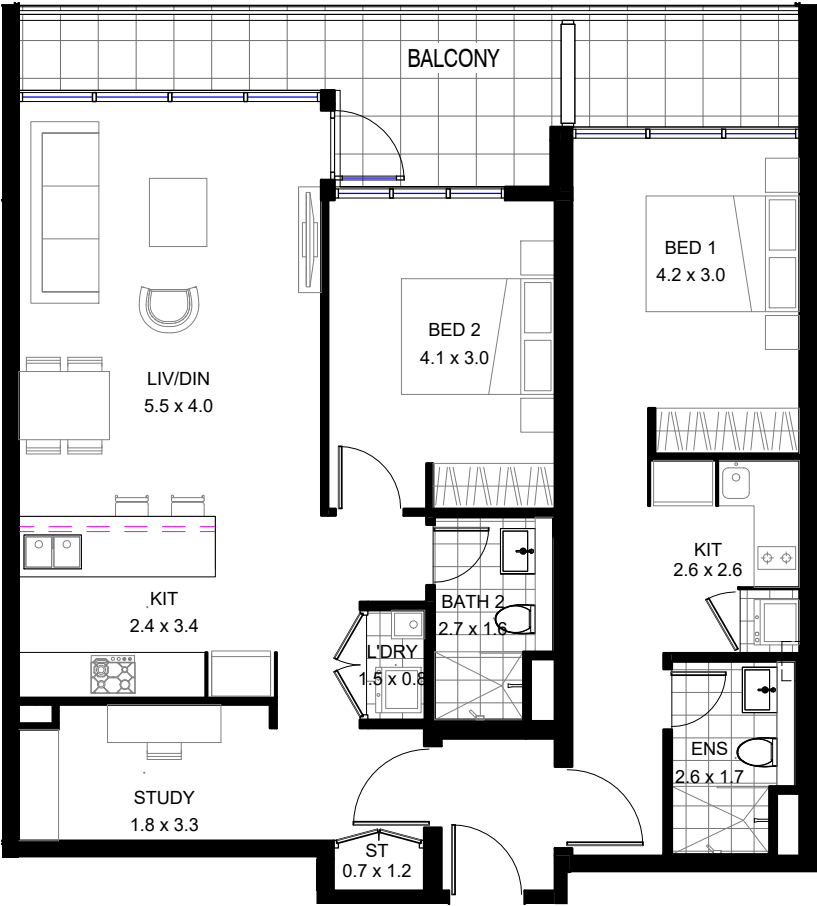
REVISED 08/09/2021

Bathla

1300 228 452 sales@bathla.com.au

Disclaimer: The information and illustrations in this document are indicative only and are subject to the terms of the contract for sale and the strata plan in the contract for sale. Any furniture or fixtures depicted are illustrative only and not part of the property sold. The contract for saleshowls inclusions sold with the property. Purchasers must rely on their enquiries and the information in the contact for sale.

ADVANCE ST APARTMENT



2 BEDROOM
(DUAL KEY)

LEVEL3

APARTMENT304

2

2

2

Internal Area:96.1 m²

External Area:16.9 m²

Total Area:113.0 m²

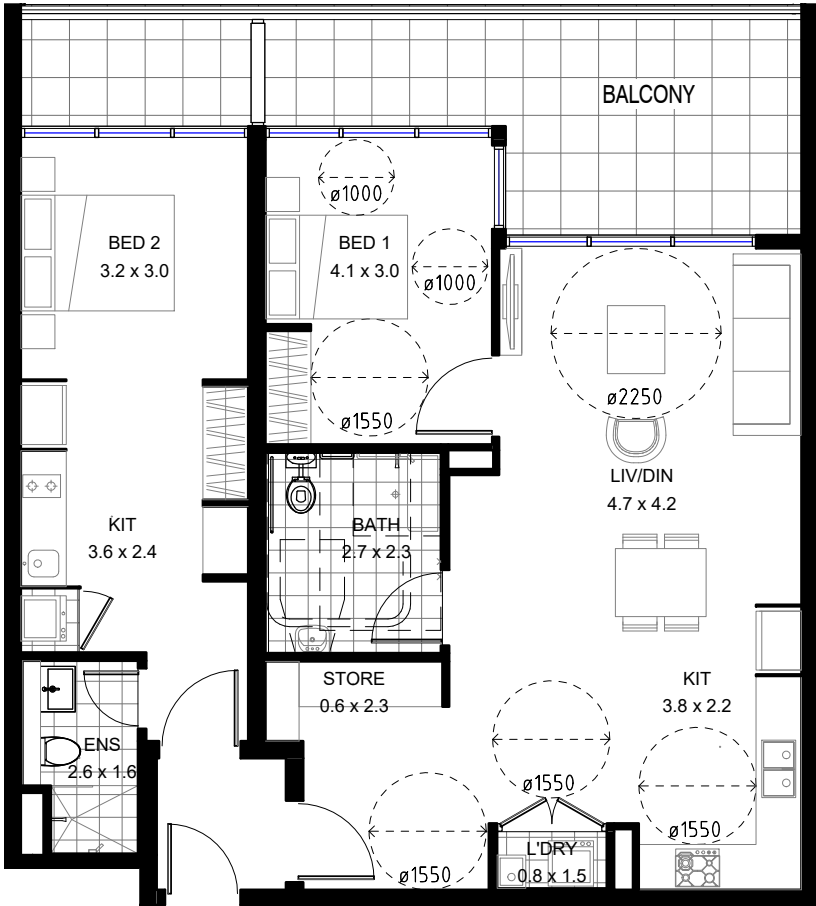
Bathla

1300 228 452 sales@bathla.com.au

REVISED 08/09/2021

Disclaimer: The information and illustrations in this document are indicative only and are subject to the terms of the contract for sale and the strata plan in the contract for sale. Any furniture or fixtures depicted are illustrative only and not part of the property sold. The contract for saleshowls inclusions sold with the property. Purchasers must rely on their enquiries and the information in the contact for sale.




ADVANCE ST APARTMENT

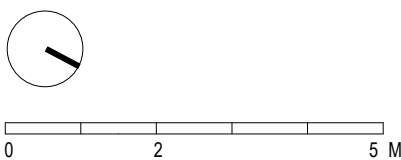


**2 BEDROOM
(ADP- DUAL KEY)**

LEVEL 1
APARTMENT 105



		
2	2	2
Internal Area:	94.1 m ²	
External Area:	22.3 m ²	
Total Area:	116.4 m ²	



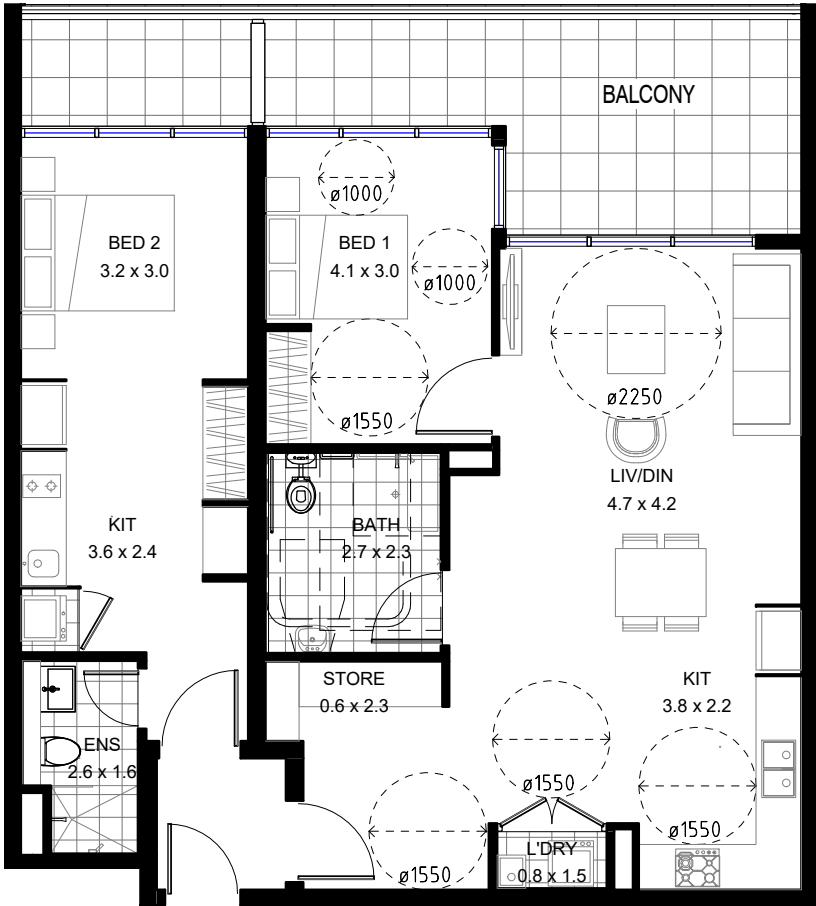
REVISED 08/09/2021

Bathla

1300 228 452 sales@bathla.com.au

Disclaimer: The information and illustrations in this document are indicative only and are subject to the terms of the contract for sale and the strata plan in the contract for sale. Any furniture or fixtures depicted are illustrative only and not part of the property sold. The contract for saleshow's inclusions sold with the property. Purchasers must rely on their enquiries and the information in the contract for sale.




ADVANCE ST APARTMENT

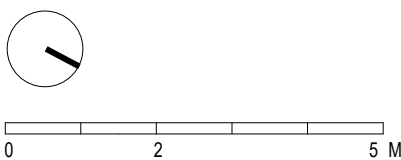


**2 BEDROOM
(ADP- DUAL KEY)**

LEVEL 2
APARTMENT 205



		
2	2	2
Internal Area:		94.1 m ²
External Area:		22.3 m ²
Total Area:		116.4 m ²



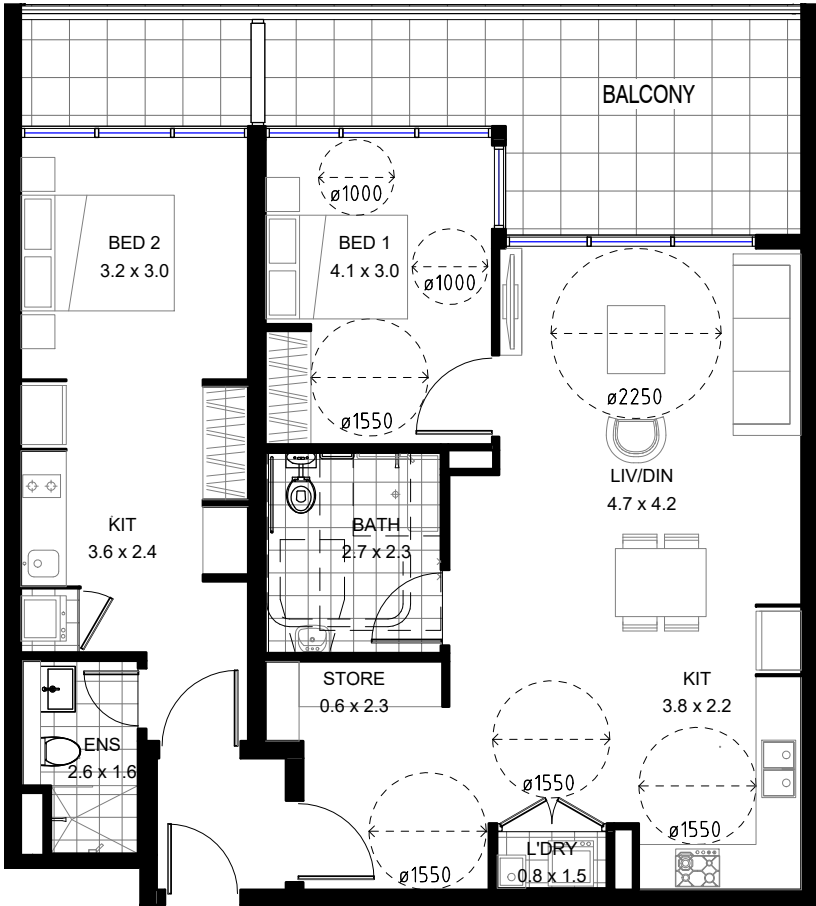
REVISED 08/09/2021

Bathla

1300 228 452 sales@bathla.com.au

Disclaimer: The information and illustrations in this document are indicative only and are subject to the terms of the contract for sale and the strata plan in the contract for sale. Any furniture or fixtures depicted are illustrative only and not part of the property sold. The contract for saleshowls inclusions sold with the property. Purchasers must rely on their enquiries and the information in the contact for sale.

ADVANCE ST APARTMENT



2 BEDROOM (ADP- DUAL KEY)

LEVEL 3
APARTMENT 305



2



2



2

Internal Area: 94.1 m²
External Area: 22.3 m²
Total Area: 116.4 m²



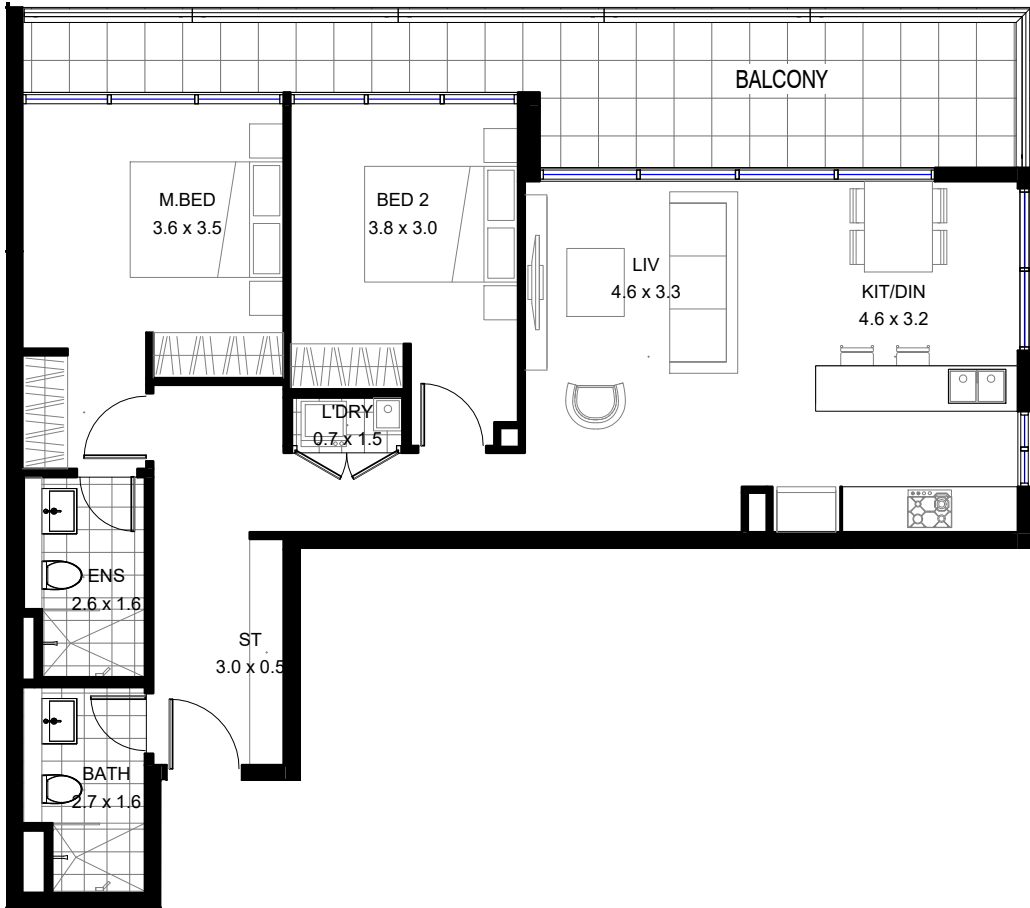
REVISED 08/09/2021

Bathla

1300 228 452 sales@bathla.com.au

Disclaimer: The information and illustrations in this document are indicative only and are subject to the terms of the contract for sale and the strata plan in the contract for sale. Any furniture or fixtures depicted are illustrative only and not part of the property sold. The contract for saleshowes inclusions sold with the property. Purchasers must rely on their enquiries and the information in the contact for sale.

ADVANCE ST APARTMENT



2 BEDROOM

LEVEL	1
APARTMENT	106



2

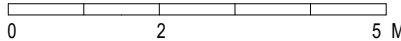


2



1

Internal Area:	79.6 m ²
External Area:	21.5 m ²
Total Area:	101.1 m ²

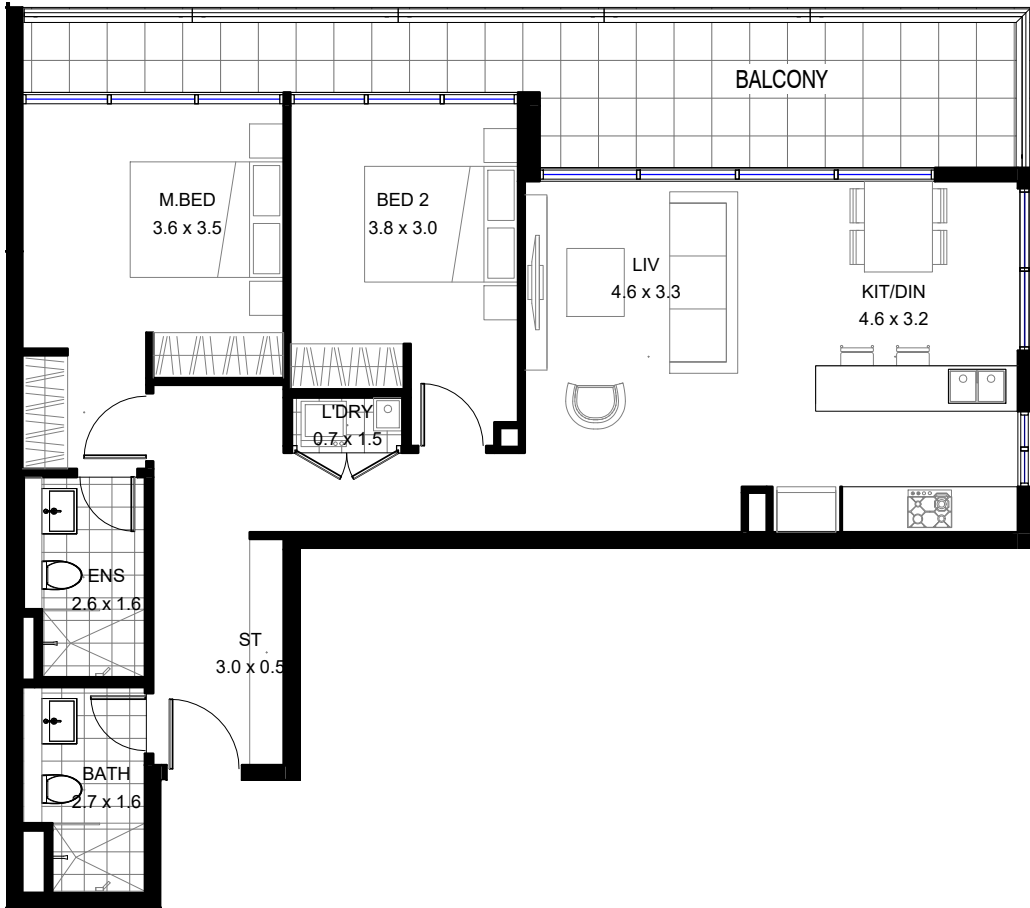


REVISED 08/09/2021

Bathla

1300 228 452 sales@bathla.com.au

ADVANCE ST APARTMENT



2 BEDROOM

LEVEL 2
APARTMENT 206



2



2



1

Internal Area: 79.6 m²
External Area: 21.5 m²
Total Area: 101.1 m²



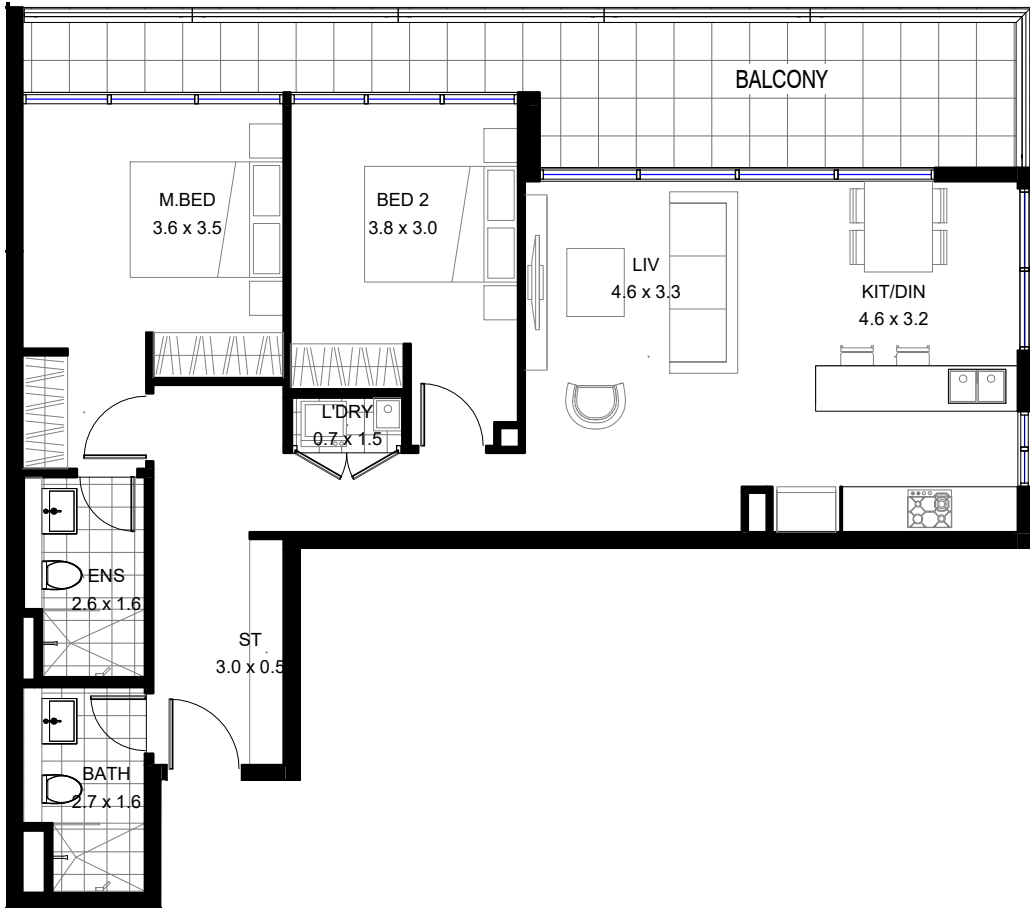
REVISED 08/09/2021

Bathla

1300 228 452 sales@bathla.com.au

Disclaimer: The information and illustrations in this document are indicative only and are subject to the terms of the contract for sale and the strata plan in the contract for sale. Any furniture or fixtures depicted are illustrative only and not part of the property sold. The contract for saleshowls inclusions sold with the property. Purchasers must rely on their enquiries and the information in the contact for sale.

ADVANCE ST APARTMENT



2 BEDROOM

LEVEL 3
APARTMENT 306



2

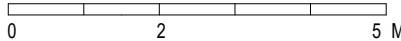


2



1

Internal Area: 79.6 m²
External Area: 21.5 m²
Total Area: 101.1 m²



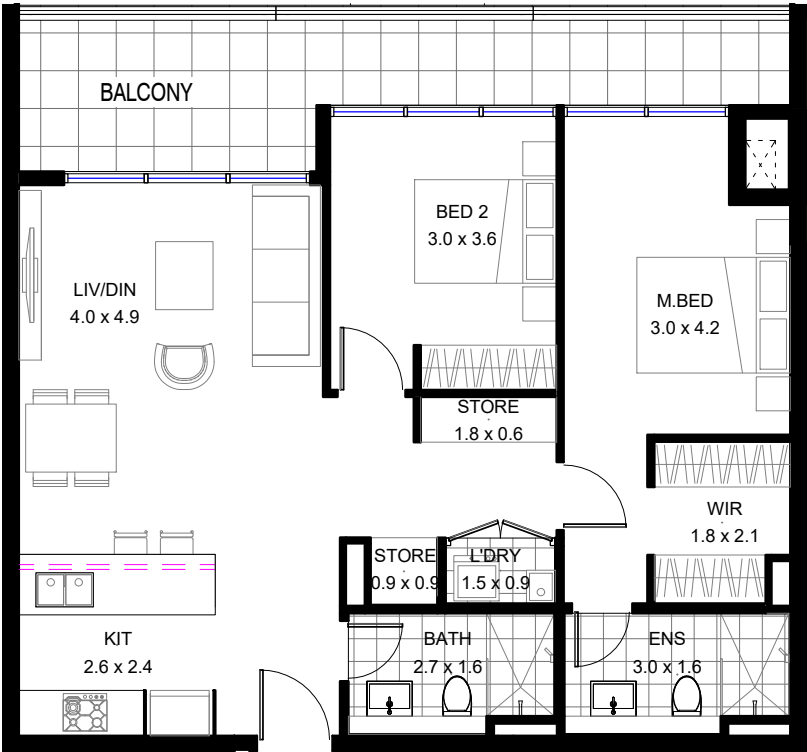
REVISED 08/09/2021

Bathla

1300 228 452 sales@bathla.com.au

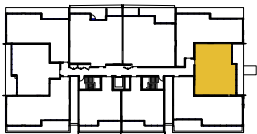
Disclaimer: The information and illustrations in this document are indicative only and are subject to the terms of the contract for sale and the strata plan in the contract for sale. Any furniture or fixtures depicted are illustrative only and not part of the property sold. The contract for saleshow's inclusions sold with the property. Purchasers must rely on their enquiries and the information in the contract for sale.

ADVANCE ST APARTMENT



2 BEDROOM

LEVEL	1
APARTMENT	107



2



2



1

Internal Area:	77.6 m ²
External Area:	17.0 m ²
Total Area:	94.6 m ²



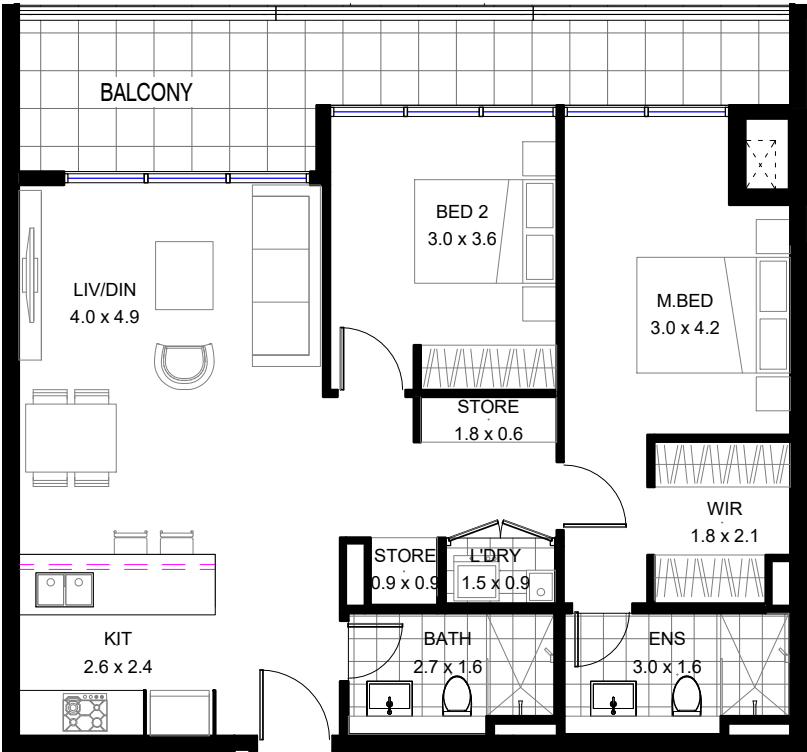
REVISED 08/09/2021

Bathla

1300 228 452 sales@bathla.com.au

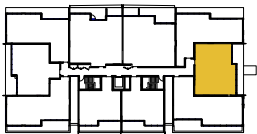
Disclaimer: The information and illustrations in this document are indicative only and are subject to the terms of the contract for sale and the strata plan in the contract for sale. Any furniture or fixtures depicted are illustrative only and not part of the property sold. The contract for saleshowings includes sold with the property. Purchasers must rely on their enquiries and the information in the contract for sale.

ADVANCE ST APARTMENT



2 BEDROOM

LEVEL 2
APARTMENT 207



2

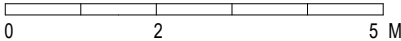


2



1

Internal Area: 77.6 m²
External Area: 17.0 m²
Total Area: 94.6 m²



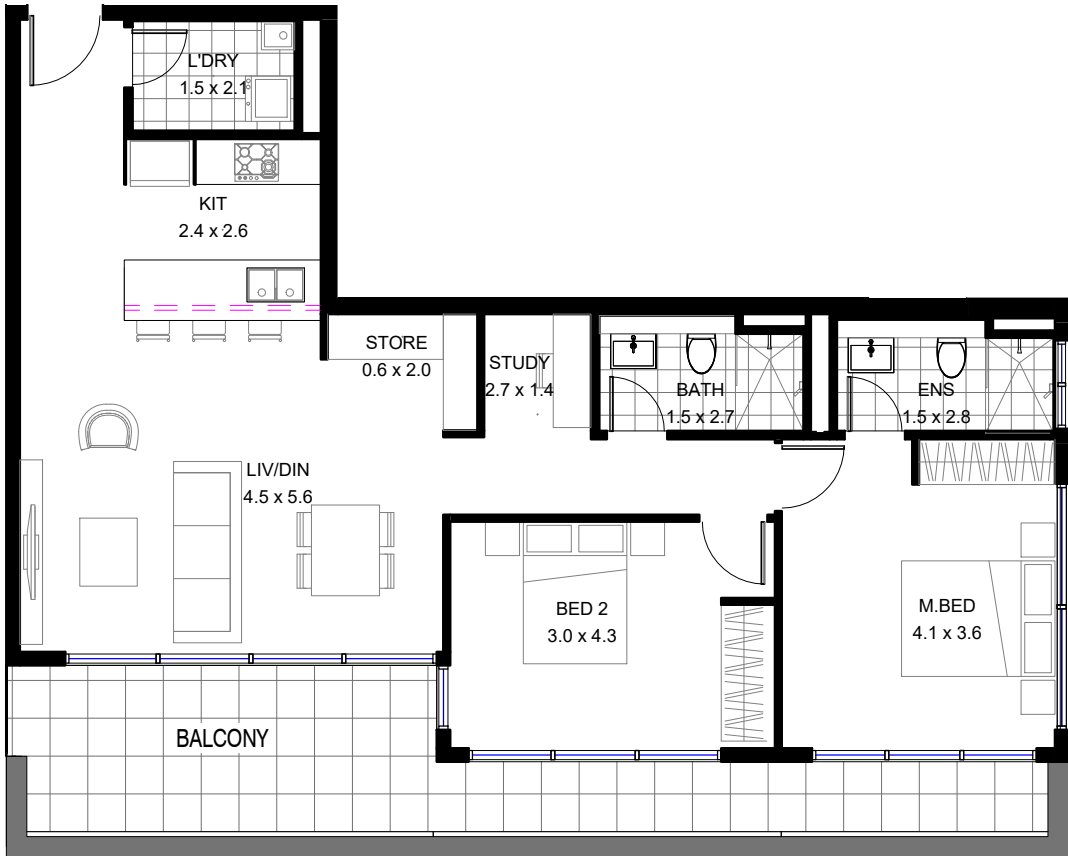
REVISED 08/09/2021

Bathla

1300 228 452 sales@bathla.com.au

Disclaimer: The information and illustrations in this document are indicative only and are subject to the terms of the contract for sale and the strata plan in the contract for sale. Any furniture or fixtures depicted are illustrative only and not part of the property sold. The contract for saleshowings includes sold with the property. Purchasers must rely on their enquiries and the information in the contract for sale.

ADVANCE ST APARTMENT



2 BEDROOM

LEVEL	1
APARTMENT	108



2

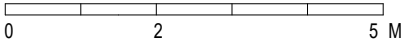


2



1

Internal Area:	85.4	m ²
External Area:	19.0	m ²
Total Area:	104.4	m ²



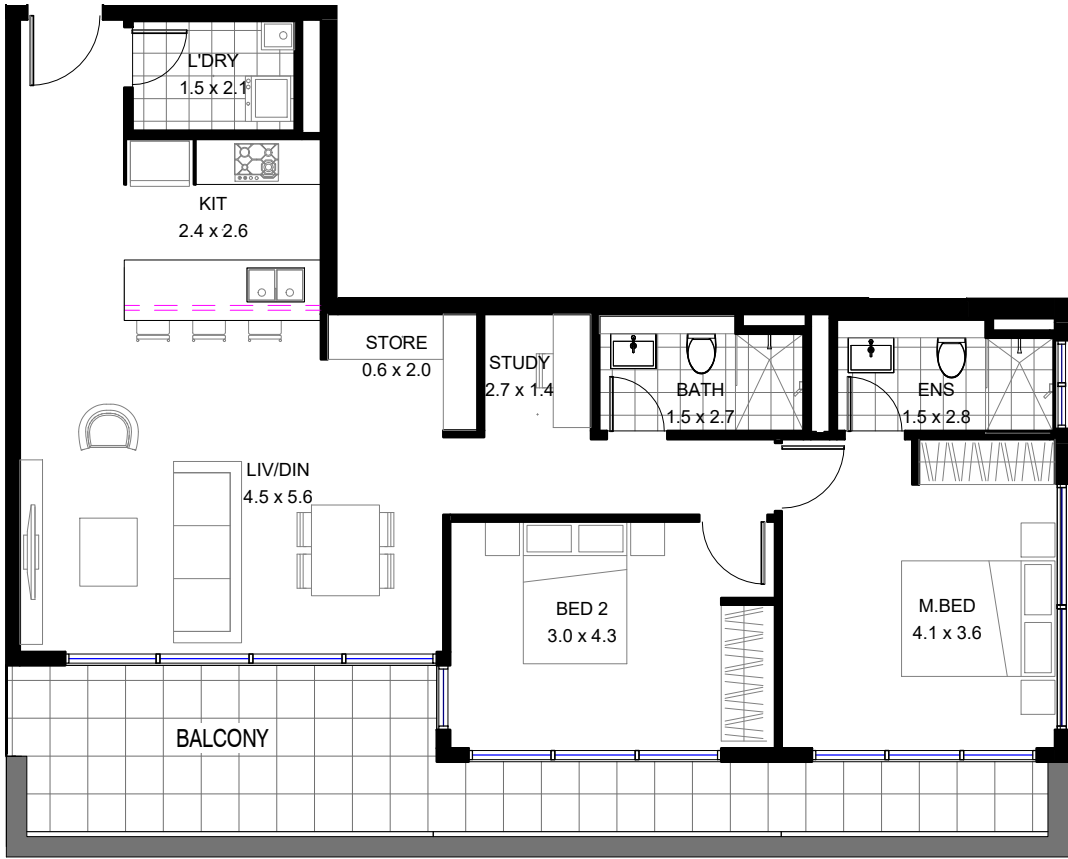
REVISED 08/09/2021

Bathla

1300 228 452 sales@bathla.com.au

Disclaimer: The information and illustrations in this document are indicative only and are subject to the terms of the contract for sale and the strata plan in the contract for sale. Any furniture or fixtures depicted are illustrative only and not part of the property sold. The contract for saleshowls inclusions sold with the property. Purchasers must rely on their enquiries and the information in the contact for sale.

ADVANCE ST APARTMENT



2 BEDROOM

LEVEL	2
APARTMENT	208



2



2



1

Internal Area:	85.4	m ²
External Area:	19.0	m ²
Total Area:	104.4	m ²



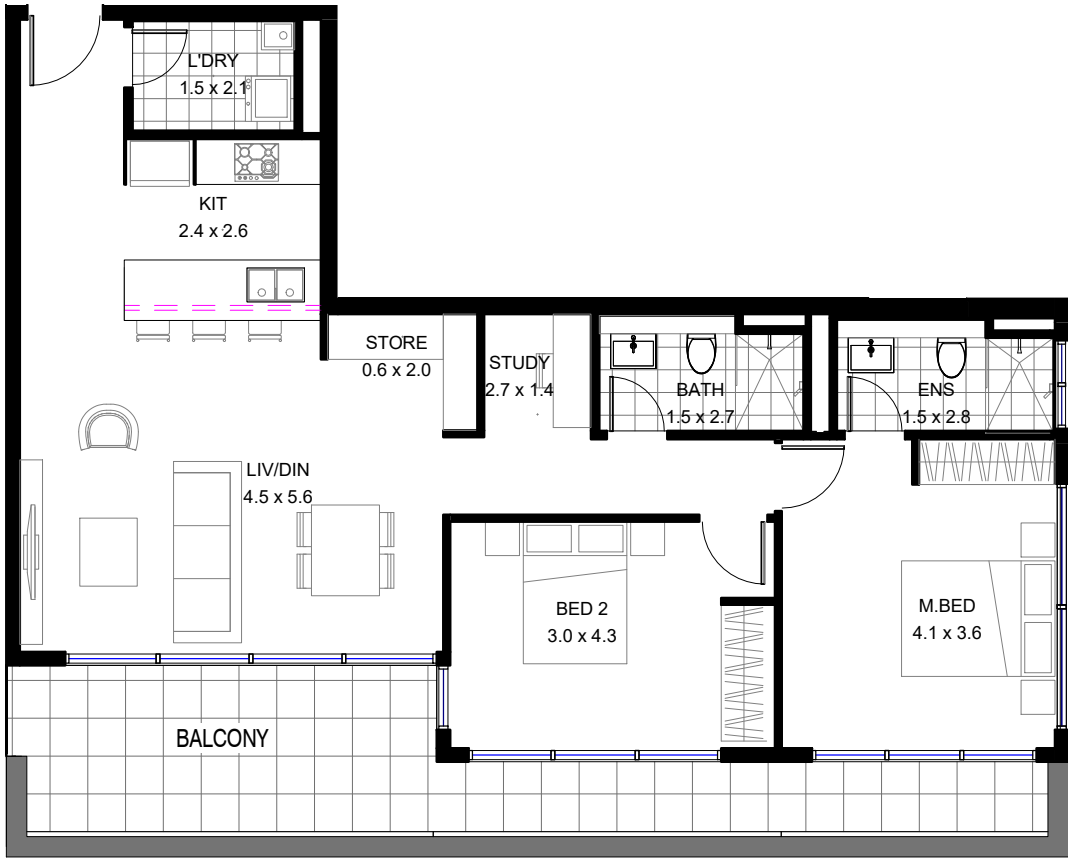
REVISED 08/09/2021

Bathla

1300 228 452 sales@bathla.com.au

Disclaimer: The information and illustrations in this document are indicative only and are subject to the terms of the contract for sale and the strata plan in the contract for sale. Any furniture or fixtures depicted are illustrative only and not part of the property sold. The contract for saleshowls inclusions sold with the property. Purchasers must rely on their enquiries and the information in the contact for sale.

ADVANCE ST APARTMENT



2 BEDROOM

LEVEL	3
APARTMENT	308



2

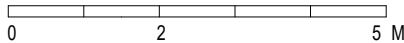


2



1

Internal Area:	85.4	m ²
External Area:	19.0	m ²
Total Area:	104.4	m ²



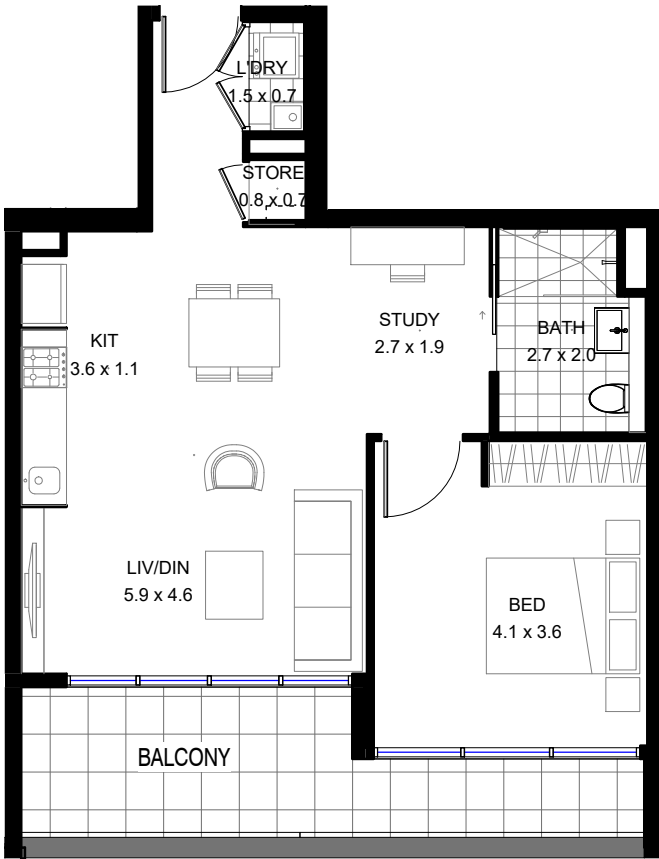
REVISED 08/09/2021

Bathla

1300 228 452 sales@bathla.com.au

Disclaimer: The information and illustrations in this document are indicative only and are subject to the terms of the contract for sale and the strata plan in the contract for sale. Any furniture or fixtures depicted are illustrative only and not part of the property sold. The contract for saleshowls inclusions sold with the property. Purchasers must rely on their enquiries and the information in the contact for sale.

ADVANCE ST APARTMENT



1 BEDROOM
(LIVABLE)

LEVEL1

APARTMENT109

1

Internal Area:

56.8 m²

1

External Area:

14.1 m²

1

Total Area:

70.9 m²

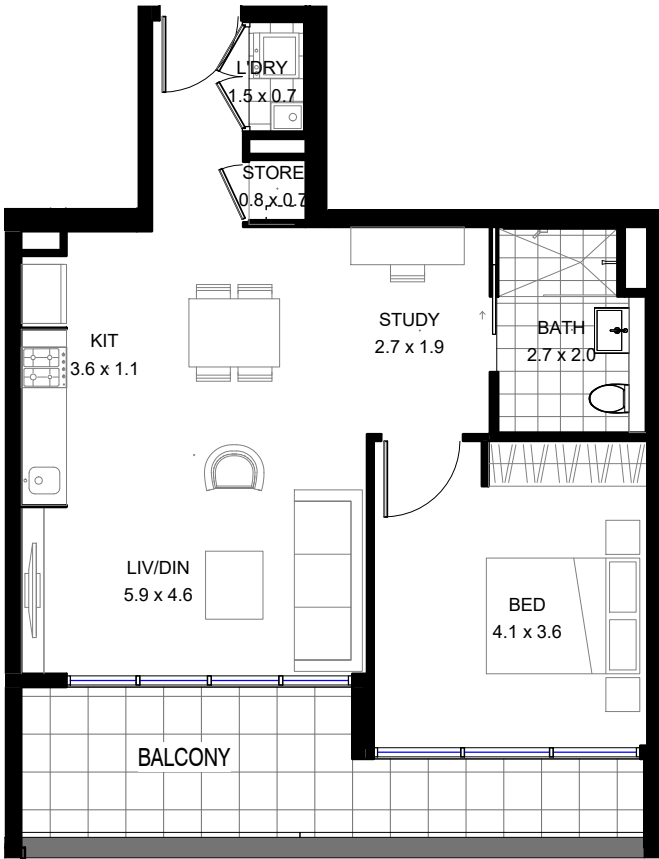
REVISED 08/09/2021

Bathla

1300 228 452 sales@bathla.com.au

Disclaimer: The information and illustrations in this document are indicative only and are subject to the terms of the contract for sale and the strata plan in the contract for sale. Any furniture or fixtures depicted are illustrative only and not part of the property sold. The contract for saleshowls inclusions sold with the property. Purchasers must rely on their enquiries and the information in the contact for sale.

ADVANCE ST APARTMENT



1 BEDROOM
(LIVABLE)

LEVEL2

APARTMENT209

1

Internal Area:

56.8 m²

1

External Area:

14.1 m²

1

Total Area:

70.9 m²

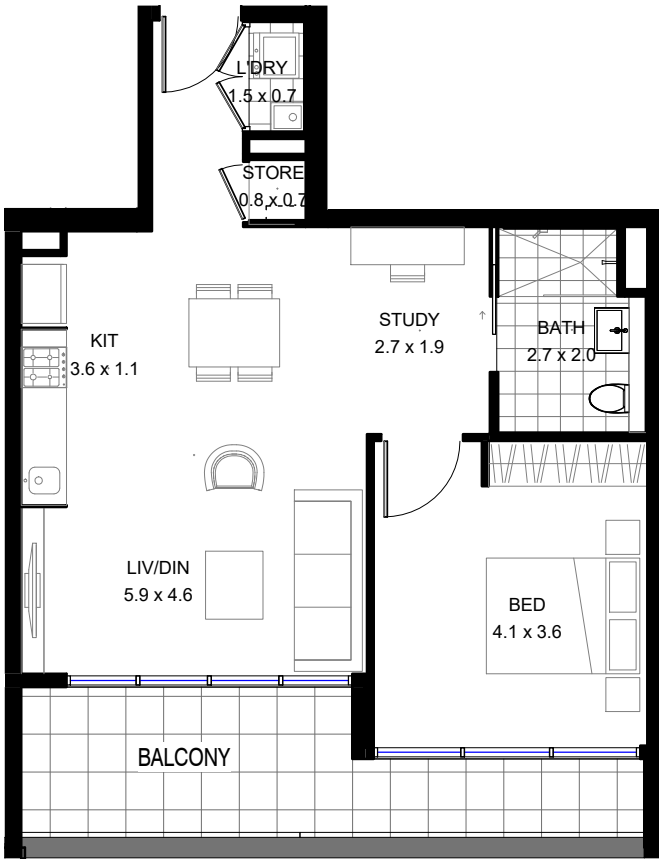
REVISED 08/09/2021

Bathla

1300 228 452 sales@bathla.com.au

Disclaimer: The information and illustrations in this document are indicative only and are subject to the terms of the contract for sale and the strata plan in the contract for sale. Any furniture or fixtures depicted are illustrative only and not part of the property sold. The contract for saleshowls inclusions sold with the property. Purchasers must rely on their enquiries and the information in the contact for sale.


ADVANCE ST APARTMENT




1 BEDROOM
(LIVABLE)

LEVEL3


APARTMENT309


1



Internal Area:
56.8 m²


1


External Area:
14.1 m²


1

Total Area:
70.9 m²

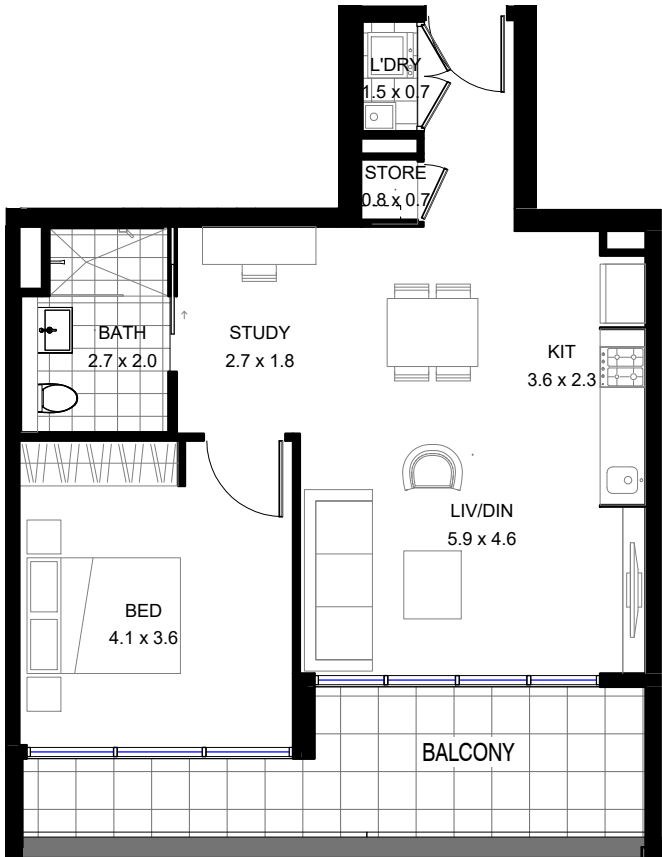
REVISED 08/09/2021



1300 228 452 sales@bathla.com.au

Disclaimer: The information and illustrations in this document are indicative only and are subject to the terms of the contract for sale and the strata plan in the contract for sale. Any furniture or fixtures depicted are illustrative only and not part of the property sold. The contract for saleshowes inclusions sold with the property. Purchasers must rely on their enquiries and the information in the contact for sale.

ADVANCE ST APARTMENT



**1 BEDROOM
(LIVABLE)**

LEVEL	1
APARTMENT	110



1



1



1

Internal Area:	56.8 m ²
External Area:	13.8 m ²
Total Area:	70.6 m ²



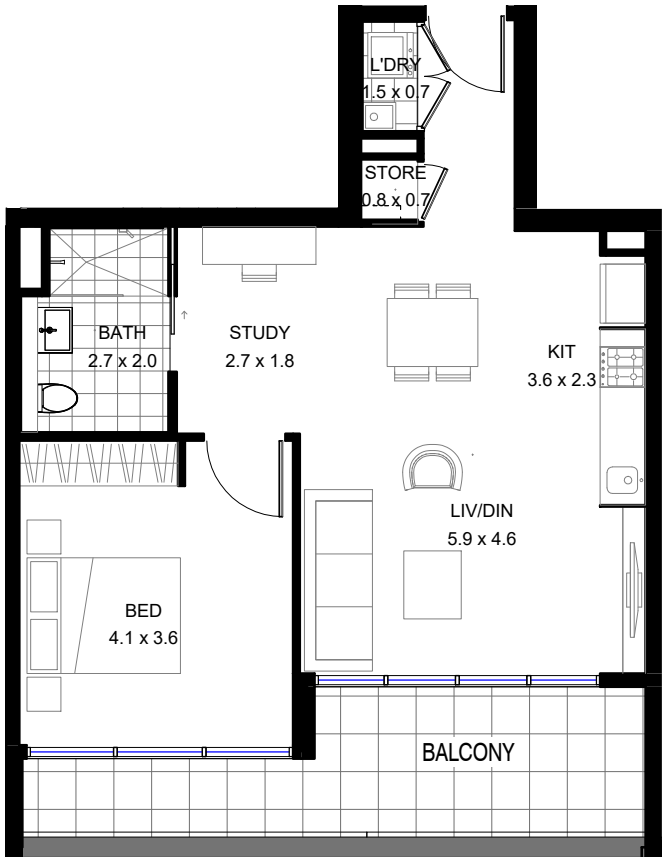
REVISED 08/09/2021

Bathla

1300 228 452 sales@bathla.com.au

Disclaimer: The information and illustrations in this document are indicative only and are subject to the terms of the contract for sale and the strata plan in the contract for sale. Any furniture or fixtures depicted are illustrative only and not part of the property sold. The contract for saleshowings includes sold with the property. Purchasers must rely on their enquiries and the information in the contract for sale.

ADVANCE ST APARTMENT



**1 BEDROOM
(LIVABLE)**

LEVEL	2
APARTMENT	210



1



1



1

Internal Area:	56.8 m ²
External Area:	13.8 m ²
Total Area:	70.6 m ²



REVISED 08/09/2021

Bathla

1300 228 452 sales@bathla.com.au

Disclaimer: The information and illustrations in this document are indicative only and are subject to the terms of the contract for sale and the strata plan in the contract for sale. Any furniture or fixtures depicted are illustrative only and not part of the property sold. The contract for saleshowls inclusions sold with the property. Purchasers must rely on their enquiries and the information in the contact for sale.

ADVANCE ST APARTMENT



1 BEDROOM (LIVABLE)

LEVEL	3
APARTMENT	310



1

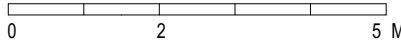


1



1

Internal Area:	56.8 m ²
External Area:	13.8 m ²
Total Area:	70.6 m ²



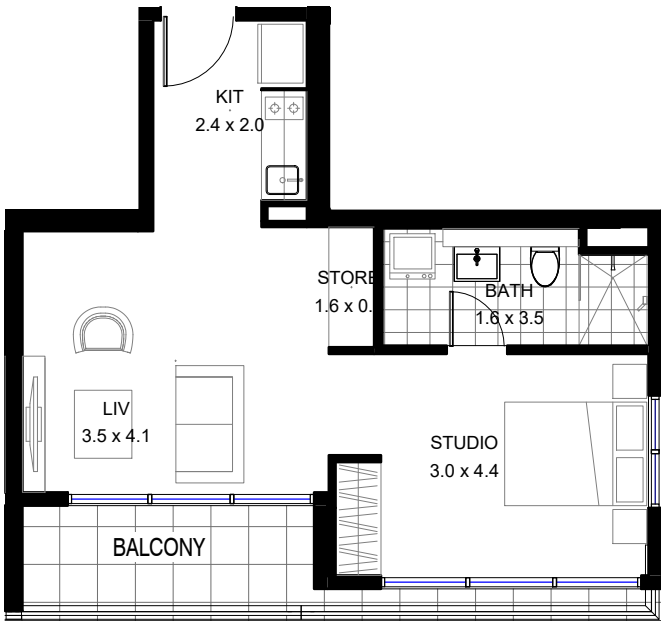
REVISED 08/09/2021

Bathla

1300 228 452 sales@bathla.com.au

Disclaimer: The information and illustrations in this document are indicative only and are subject to the terms of the contract for sale and the strata plan in the contract for sale. Any furniture or fixtures depicted are illustrative only and not part of the property sold. The contract for saleshowls inclusions sold with the property. Purchasers must rely on their enquiries and the information in the contact for sale.

ADVANCE ST APARTMENT



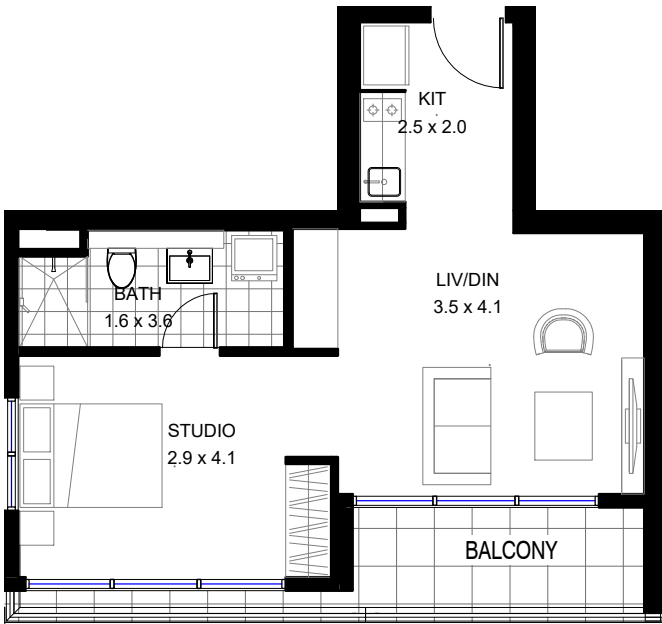
STUDIO							Bathla	1300 228 452 sales@bathla.com.au
LEVEL	4							
APARTMENT	401							

Internal Area:	38.8 m ²
External Area:	7.8 m ²
Total Area:	46.5 m ²

REVISED 08/09/2021

Disclaimer: The information and illustrations in this document are indicative only and are subject to the terms of the contract for sale and the strata plan in the contract for sale. Any furniture or fixtures depicted are illustrative only and not part of the property sold. The contract for saleshowls inclusions sold with the property. Purchasers must rely on their enquiries and the information in the contact for sale.

ADVANCE ST APARTMENT



STUDIO

LEVEL4

APARTMENT402

Internal Area:

38.8 m²

External Area:

7.8 m²

Total Area:

46.6 m²

REVISED 08/09/2021

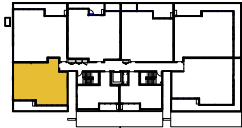
1300 228 452 sales@bathla.com.au

ADVANCE ST APARTMENT



2 BEDROOM

LEVEL	4
APARTMENT	403



2



2



2

Internal Area:	83.3 m ²
External Area:	17.6 m ²
Total Area:	100.9 m ²



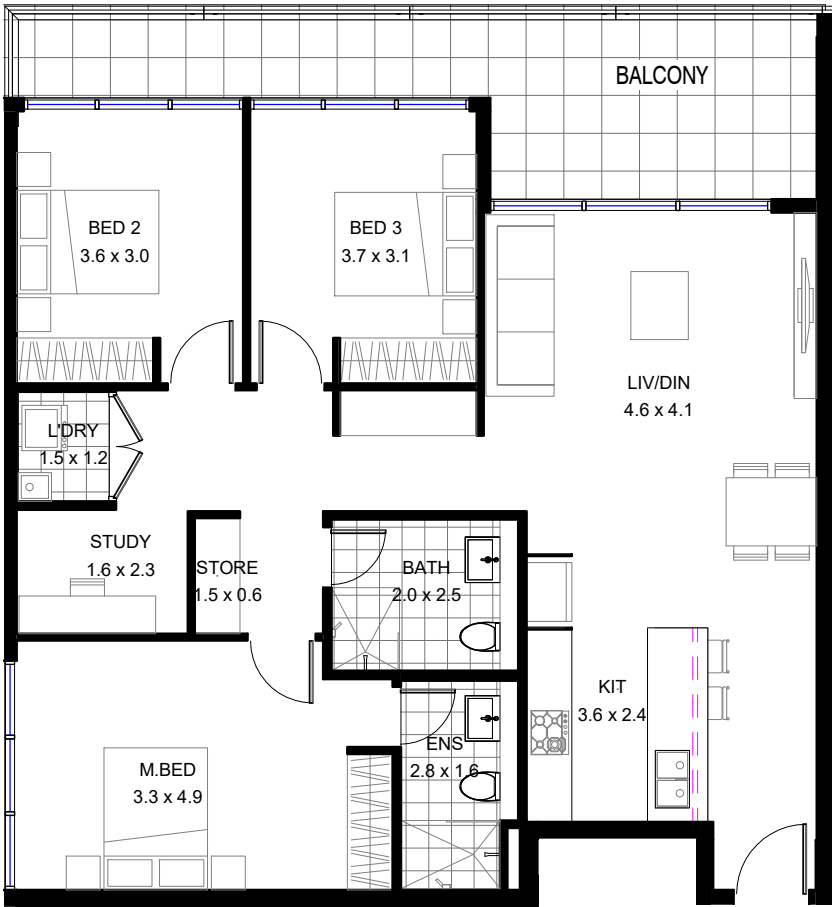
REVISED 08/09/2021

Bathla

1300 228 452 sales@bathla.com.au

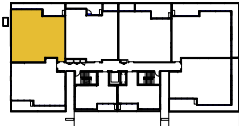
Disclaimer: The information and illustrations in this document are indicative only and are subject to the terms of the contract for sale and the strata plan in the contract for sale. Any furniture or fixtures depicted are illustrative only and not part of the property sold. The contract for saleshow's inclusions sold with the property. Purchasers must rely on their enquiries and the information in the contract for sale.

ADVANCE ST APARTMENT



3 BEDROOM

LEVEL	4
APARTMENT	404



3



2



1

Internal Area:	100.0	m ²
External Area:	19.0	m ²
Total Area:	119.0	m ²



2



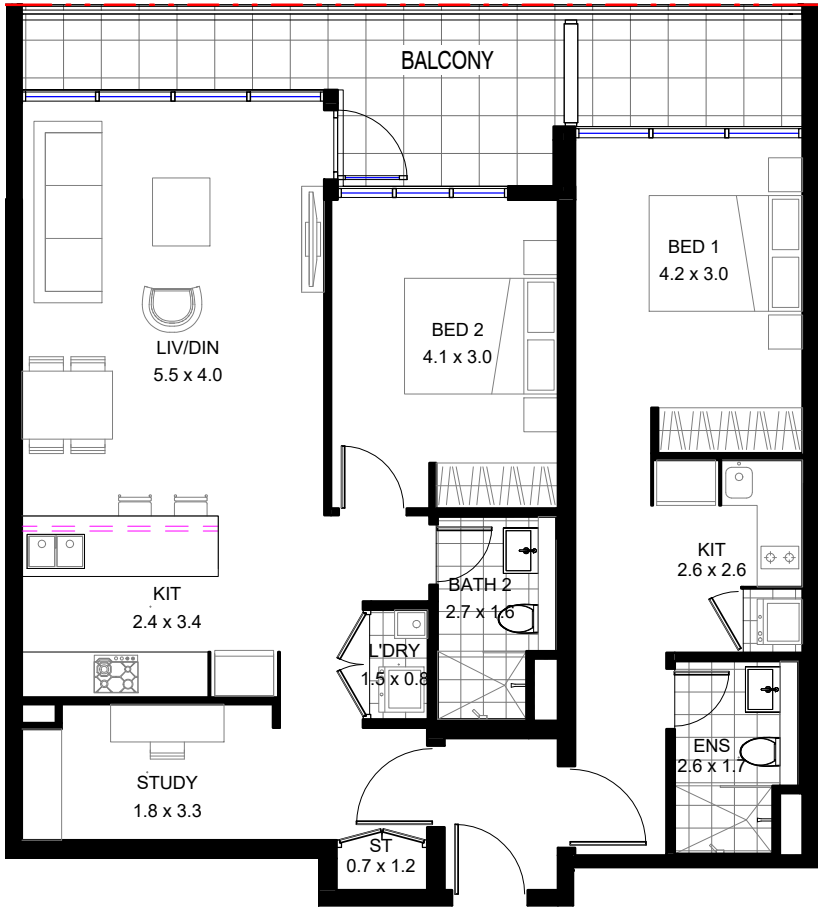
REVISED 08/09/2021

Bathla

1300 228 452 sales@bathla.com.au

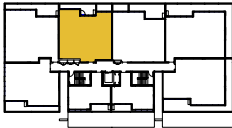
Disclaimer: The information and illustrations in this document are indicative only and are subject to the terms of the contract for sale and the strata plan in the contract for sale. Any furniture or fixtures depicted are illustrative only and not part of the property sold. The contract for saleshowls inclusions sold with the property. Purchasers must rely on their enquiries and the information in the contact for sale.

ADVANCE ST APARTMENT



**2 BEDROOM
(DUAL KEY)**

LEVEL 4
APARTMENT 405



Internal Area: 96.1 m²
External Area: 15.1 m²
Total Area: 112.2 m²



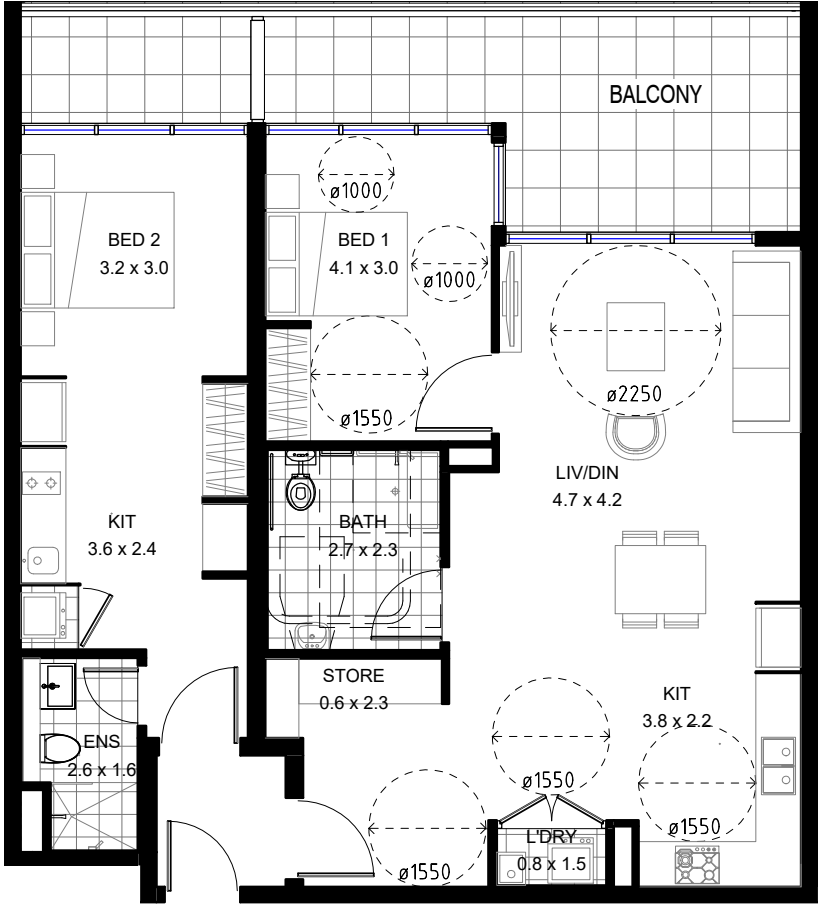
REVISED 08/09/2021

Bathla

1300 228 452 sales@bathla.com.au

Disclaimer: The information and illustrations in this document are indicative only and are subject to the terms of the contract for sale and the strata plan in the contract for sale. Any furniture or fixtures depicted are illustrative only and not part of the property sold. The contract for saleshowls inclusions sold with the property. Purchasers must rely on their enquiries and the information in the contact for sale.

ADVANCE ST APARTMENT



**2 BEDROOM
(ADP-DUAL KEY)**

LEVEL 4
APARTMENT 406



2



2



2

Internal Area: 94.4 m²
External Area: 22.3 m²
Total Area: 116.7 m²



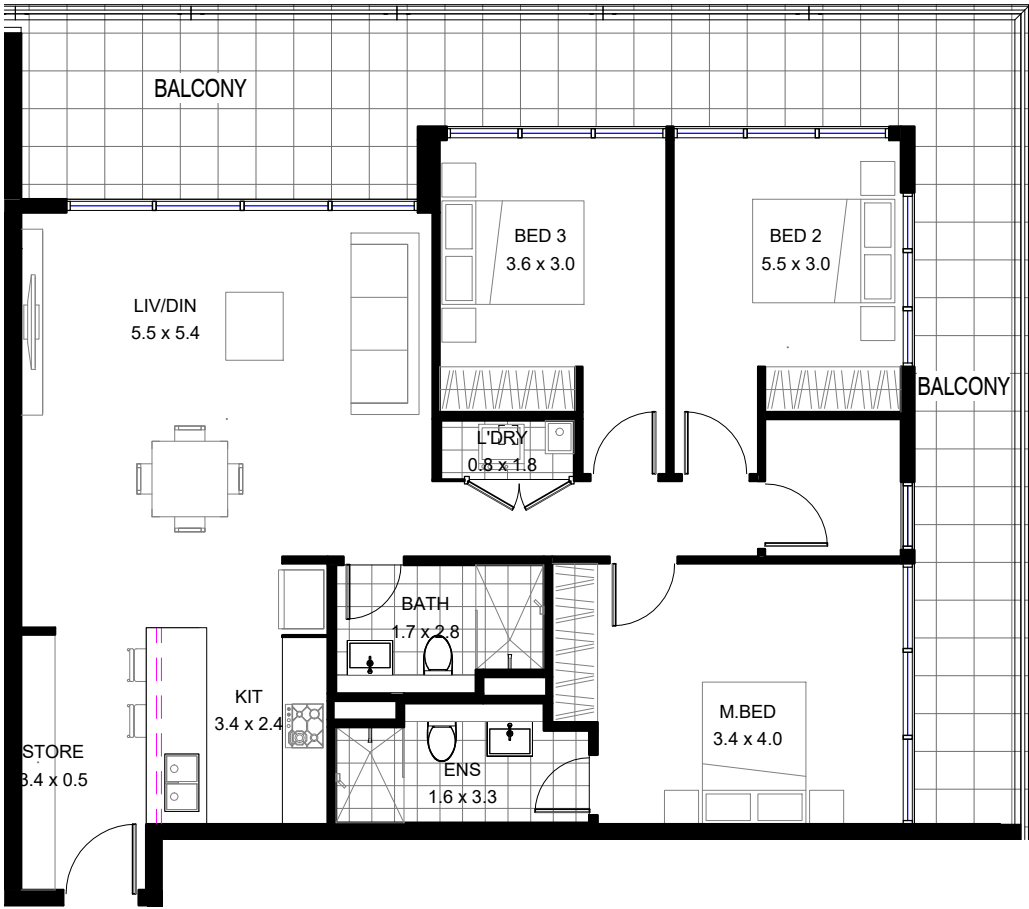
REVISED 08/09/2021

Bathla

1300 228 452 sales@bathla.com.au

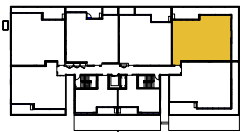
Disclaimer: The information and illustrations in this document are indicative only and are subject to the terms of the contract for sale and the strata plan in the contract for sale. Any furniture or fixtures depicted are illustrative only and not part of the property sold. The contract for saleshowls inclusions sold with the property. Purchasers must rely on their enquiries and the information in the contact for sale.

ADVANCE ST APARTMENT



3 BEDROOM

LEVEL	4
APARTMENT	407



Internal Area:
External Area:
Total Area:

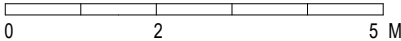


2



2

100.7 m²
40.7 m²
141.4 m²



REVISED 08/09/2021

Bathla

1300 228 452 sales@bathla.com.au

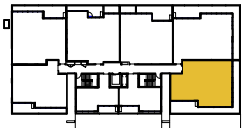
Disclaimer: The information and illustrations in this document are indicative only and are subject to the terms of the contract for sale and the strata plan in the contract for sale. Any furniture or fixtures depicted are illustrative only and not part of the property sold. The contract for saleshowls inclusions sold with the property. Purchasers must rely on their enquiries and the information in the contact for sale.

ADVANCE ST APARTMENT



3 BEDROOM

LEVEL	4
APARTMENT	408



3



2



1

Internal Area:	96.0 m ²
External Area:	39.4 m ²
Total Area:	135.4 m ²



REVISED 08/09/2021

Bathla

1300 228 452 sales@bathla.com.au

Disclaimer: The information and illustrations in this document are indicative only and are subject to the terms of the contract for sale and the strata plan in the contract for sale. Any furniture or fixtures depicted are illustrative only and not part of the property sold. The contract for saleshowls inclusions sold with the property. Purchasers must rely on their enquiries and the information in the contact for sale.